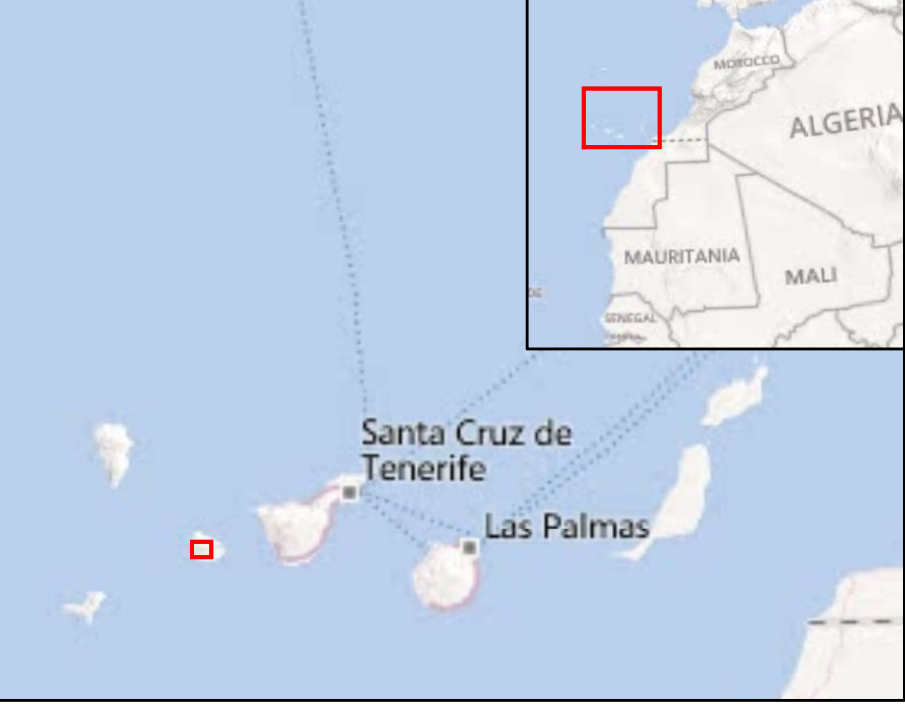


La Gomera - SPAIN
Forest Fire - 04/08/2012
Delineation Map - Detail

Production date: 16.08.2012



Cartographic Information

1:18.500 Full color ISO A1, medium resolution (200 dpi)



Map Coordinate System: WGS 1984 UTM Zone 28N
Graticule: WGS 84 geographical coordinates

Legend

- Crisis Information**
 - Burnt Area 15.08.2012
- General Information**
 - Area of Interest
 - District
 - Contour lines
- Transportation**
 - Primary Road
 - Secondary Road
 - Local Road
 - Other
 - No Driveway
- Built-Up Area**
 - Residential
- Point of Interest**
 - Commercial
 - Religious

Consequences within the AOI	
Estimated AOI population	1812 Inhabitants
Affected Areas	2312 Ha
	Woodland 1163 Ha
	Scrub 747 Ha
	Cropland 402 Ha

Map Information

Starting from August 4th, 2012 forest fires are affecting La Gomera - SPAIN, one of the smallest Canary Islands, around the area of Alajeró-Vallehermoso. This is the delineation map showing the situation after the event on 15.08.2012. The core users of the map are National Authority for Civil Protection - Spain. The scope of the map production is support to emergency response activities.

Data Sources

WorldView-02, © Digitalglobe 2012 (acquired on 15/08/2012, 2 m resolution, 0% cloud coverage) provided under ESA GSC-SA DWH license.
Base vector layer based on SIOSE (land cover & land use information system of Spain), a land cover and land use Spanish database, having 1:25.000 as reference scale and year 2005 as reference date, refined by GAF AG.
Crisis information generated by GAF AG.
Population estimation based on Landsat2000.
All Data sources are complete and with no gaps.

Dissemination/Publication

No restrictions on the publication of the mapping apply.
Delivery formats are GeoTIFF, GeoPDF, GeoJPEG and vectors (shapefile and KML formats).

Framework

The products elaborated in the framework of current mapping in rush mode activation are realized to the best of our ability, within a very short time frame during a crisis, optimising the available data and information. All geographic information has limitations due to scale, resolution, date and interpretation of the original data sources. The products are compliant with GIO-EMS RUSH Product Portfolio specifications.

Map production

Present map shows the burnt area at 15.08.2012 on La Gomera island (SPAIN). The thematic layer assessing the delineation of the event has been created by visual interpretation of post-event image (WV-2, © Digitalglobe 2012, acquired on 15.08.2012, 2m resolution) used as background imagery on the map. Background imagery is displayed as a false color composite (R = Near Infrared, G = Red, B = Green).
The satellite image is not affected by the presence of smoke/haze/shadows.
The satellite image has been radiometrically enhanced and georeferenced using the SRTM data.
The estimated geometric accuracy of this product is 6.5 m CE90 or better, from native positional accuracy of the background satellite image.
The estimated thematic accuracy of this product is 85% or better, as it is based on visual interpretation of recognizable items on high resolution optical imagery.
Map produced on 16/08/2012 by GAF AG under contract 257219 with the European Commission. All products are © of the European Commission.
Name of the release inspector (quality control): e-GIOS (GDO).
E-mail: rush@ems-gmes.eu

