

Fischbeck - GERMANY

Flood - 17/06/2013

Delineation Map - Overview

Production date: 21/06/2013

Cartographic Information

1:65000

Full color ISO A1, medium resolution (200 dpi)

0 1.25 2.5 5 km

Map Coordinate System: WGS 1984 UTM Zone 33N
Graticule: WGS 84 geographical coordinates



Legend

Crisis Information

Flooded Area (18/06/2013)

General Information

Area of Interest

Administrative boundaries

Region

Municipality

Settlements

Populated Place

Built-Up Area

Hydrology

River

Stream

Ditch

Lake

River

Point of Interest

Educational

Industrial

Institutional

Medical

Storage tank

Extraction mine

Quarry

Power station

Transportation

Aerodrome

Station

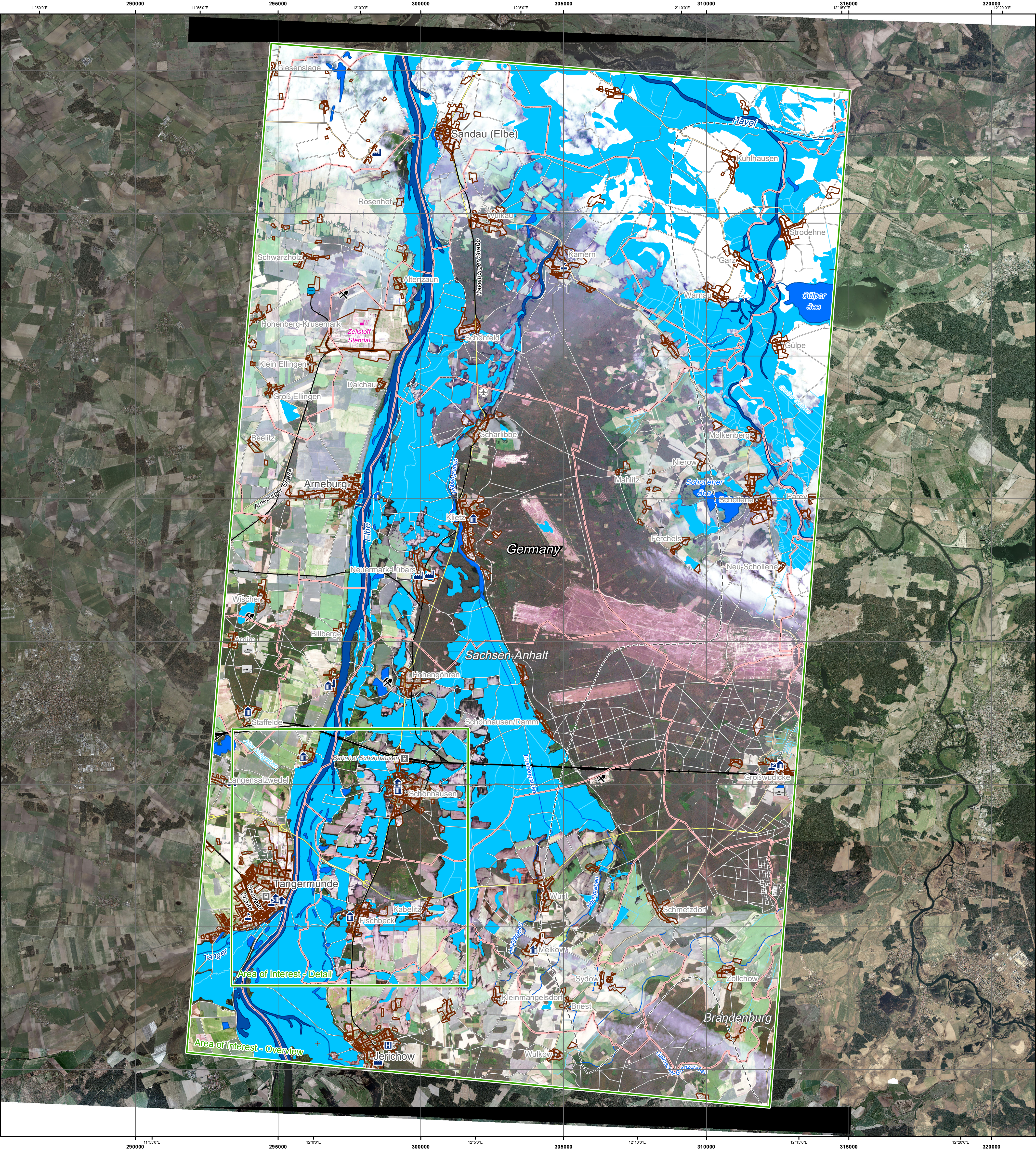
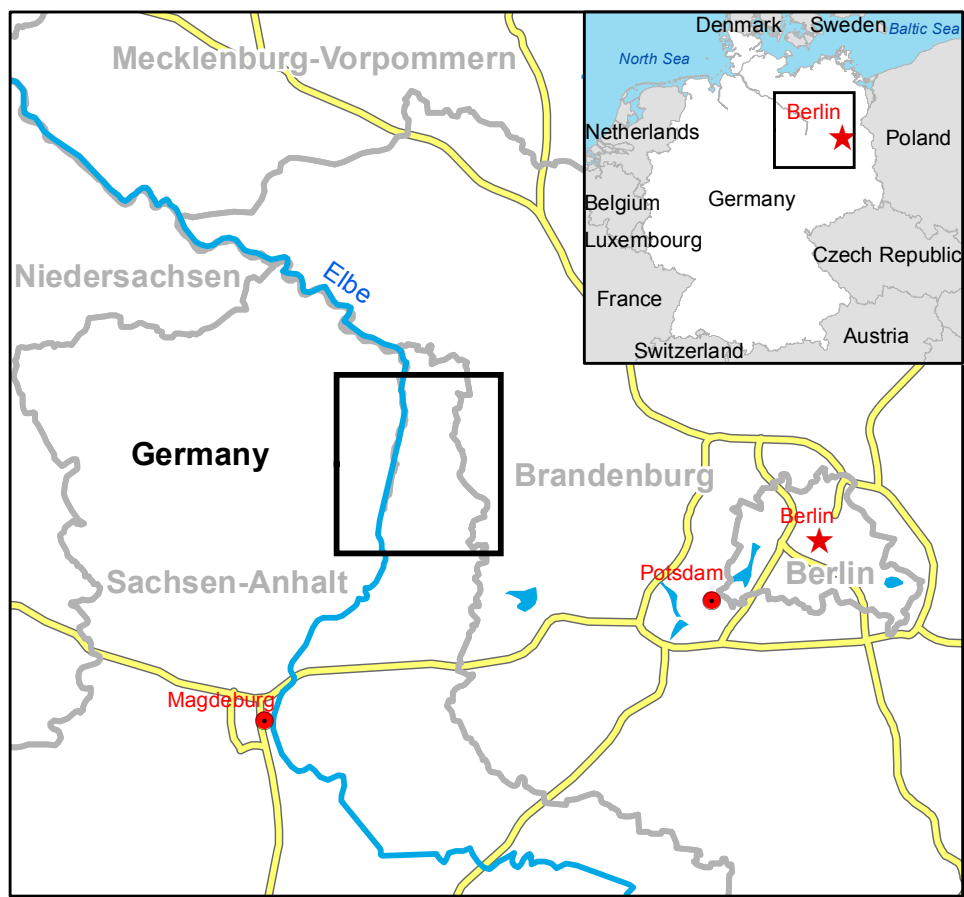
Railway

Primary Road

Secondary Road

Local Road

	Consequences within the Overview AOI on 18/06/2013
Population	Estimated Affected Population
Transportation	Affected Roads
Land Use	Affected Railways
Settlements	Affected Agriculture
	Affected Forest
	Affected Residential
	Affected Industrial
	Affected Commercial
	Affected Transportation
	Affected Recreational



Map Information

Weeks of heavy rain have left the Elbe, other rivers causing extensive damage in central and southern Germany. The swollen river Elbe has breached its banks again on its relentless march toward the North Sea, forcing German authorities to evacuate 10 villages and shut one of the main railway routes. In central and southern Germany floods have been affecting several towns and villages. A dike near Fischbeck in the state of Saxony-Anhalt was breached, allowing flood waters to inundate a large area. The core users of the map are Civil Protection authorities involved in in-field operations.

Data Sources

Inset maps based on: Administrative boundaries (JRC 2013, GISCO 2010, © EuroGeographics), Hydrology, Transportation (Natural Earth, 2012, CC0 River DB © EU-JRC 2007), Settlements (Geonames, 2013), RADARSAT-2 © MDA (acquired on 18/06/2013 17:13 UTC, GSD 1.5 m), WorldView-2 © DigitalGlobe (acquired on 18/06/2013 10:10 UTC, GSD 2.0 m, 20% cloud coverage), Aerial orthomages © Federal Agency for Cartography and Geodesy (BKG) (GSD 2.50 m, 0% cloud coverage), Base vector layers based on OpenStreetmap, Geonames and Corine Land Cover (approx. 1:25,000, extracted on 18/06/2013), refined by SIRS. All Data sources are complete and with no gaps.

Dissemination/Publication

No restrictions on the publication of the mapping apply. Delivery formats are GeoTIFF, GeoPDF, GeoJPEG and vectors (shapefile and KML formats).

Framework

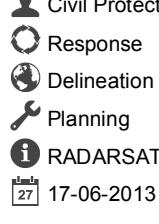
The products elaborated in the framework of current mapping in rush mode activation are realized to the best of our ability, within a very short time frame during a crisis, optimising the available data and information. All geographic information has limitations due to scale, resolution, date and interpretation of the original data sources. The products are compliant with GIO-EMS RUSH Product Portfolio specifications.

Map Production

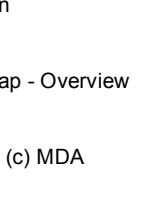
The present map shows basic topographic features such as transportation, hydrology and settlements in the area of Fischbeck (Sachsen-Anhalt, GERMANY). These basic topographic features are derived from public datasets, refined by means of visual interpretation of the national aerial orthomages © Federal Agency for Cartography and Geodesy (BKG) (GSD 2.50 m, 0% cloud coverage). The thematic layer assessing the delineation of the flood event has been derived from RADARSAT-2 post-event imagery (1.5 m resolution, acquired on 18/06/2013 17:13 UTC). The WorldView-2 post-event image (2.0 m resolution, acquired on 18/06/2013 10:10 UTC, 20% cloud coverage) is used as background image on this map and confirms the analysis from RADARSAT-2 imagery. The estimated geometric accuracy of this product is 3 m CE90 or better, from native positional accuracy of the background aerial image. The estimated thematic accuracy of this product is 85% or better, based on previous experience in using high-resolution SAR for flood extent delineation. Please be aware that the thematic accuracy might be lower in urban and forested areas due to known limitations of the analysis technique. Map produced on 19/06/2013 by SIRS under contract 257219 with the European Commission. All products are © of the European Commission. Name of the release inspector (quality control): e-GEOS (ODO).




Flood




Civil Protection




Response



Delineation Map - Overview




Planning



RADARSAT-2 (c) MDA

17-06-2013





Copernicus
The European Earth Observation Programme

