

Fortore - ITALY Flood - 01/12/2013 Delineation Map - Overview

Production date: 10/12/2013

Cartographic Information

1:70000

Full color ISO A1, medium resolution (200 dpi)

0 1.25 2.5 5 km
Map Coordinate System: WGS 1984 UTM Zone 33N
Graticule: WGS 84 geographical coordinates

Legend

Crisis Information

Flooded Area (05/12/2013, 09:35 UTC)

General Information

Area of Interest

Administrative boundaries

Region

Municipality

Hydrology

River

Stream

Lake

Reservoir

Point of Interest

Educational

Medical

Religious

Transportation

Industry / Utilities

Quarry

Transportation

Bridge

Railway

Motorway

Primary Road

Secondary Road

Local Road

Settlements

Populated Place

Industrial

Recreational

Residential

Land use - Land Cover

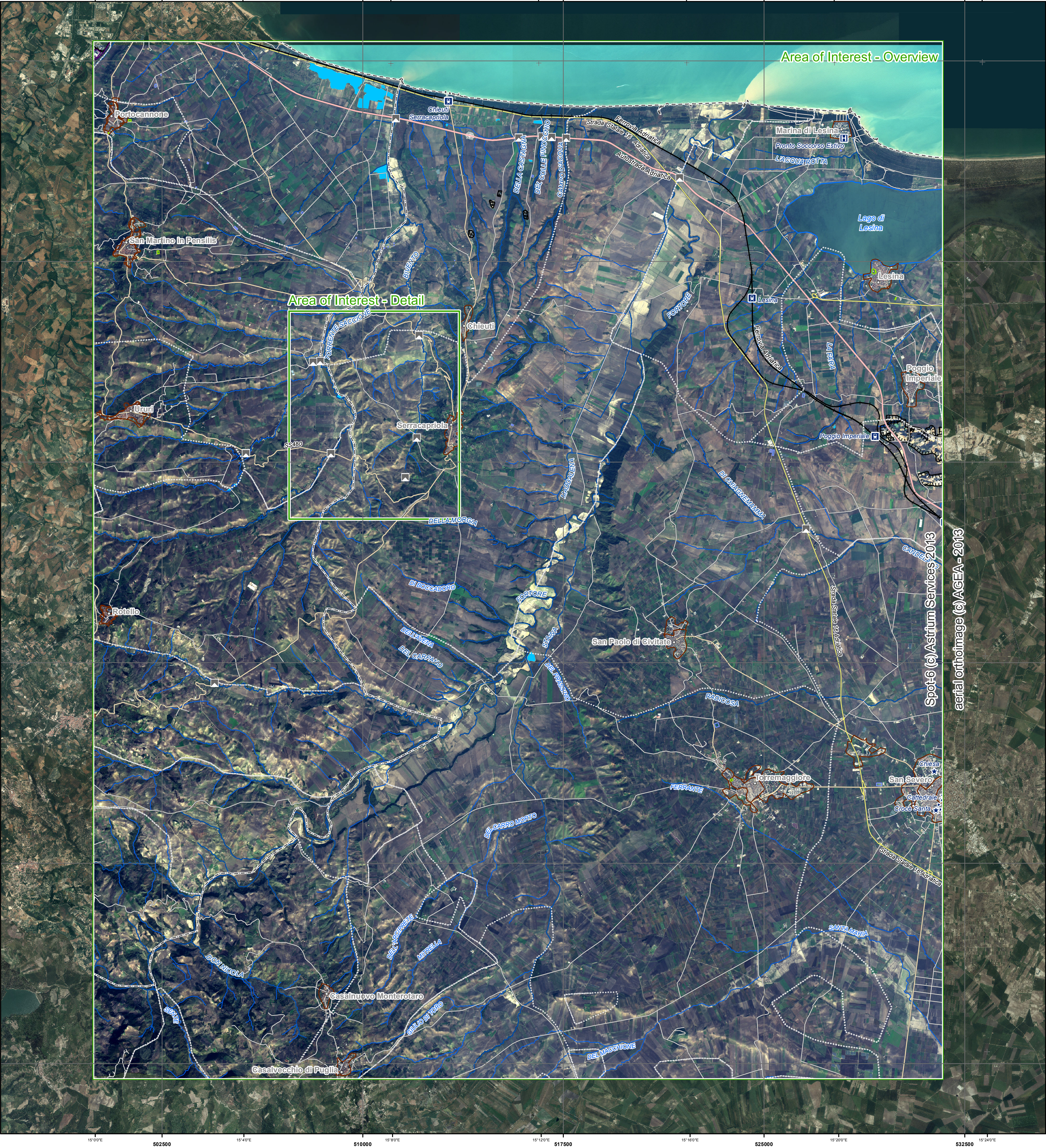
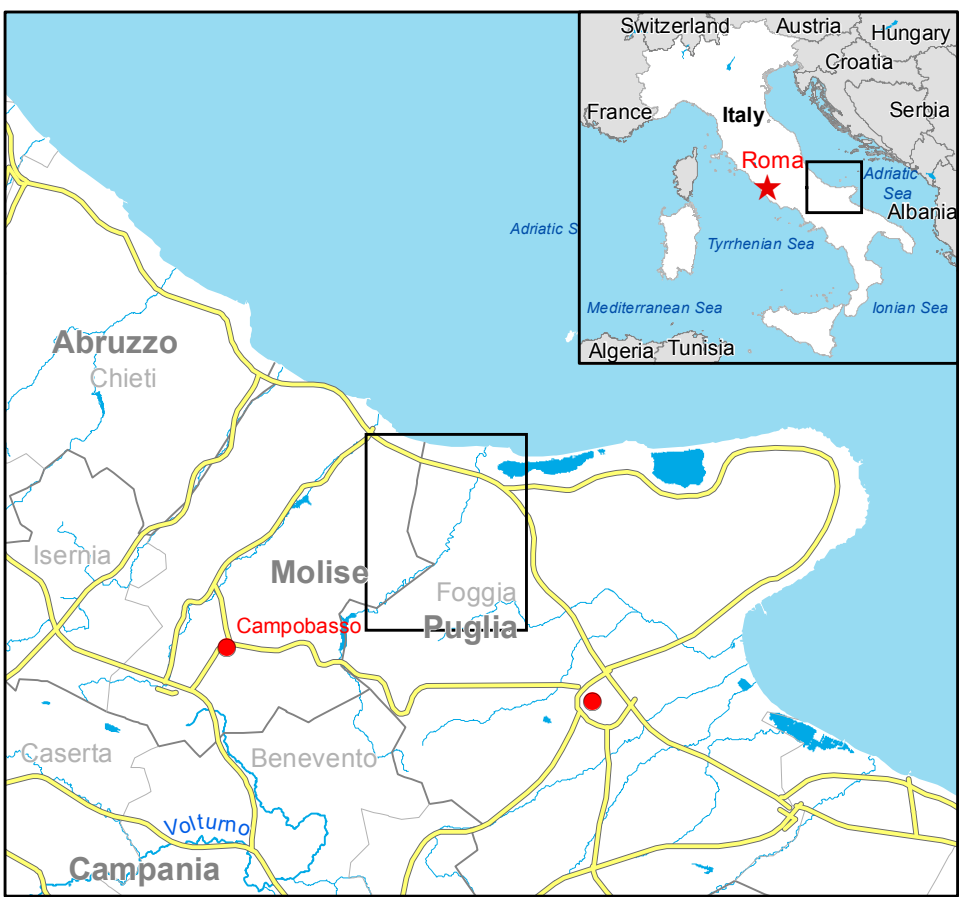
Features available in vector data

Physiography - Contour line and elevation (m)

Features available in vector data

Consequences within the overview AOI on 05/12/2013

		Affected	Total in AOI
Flooded area	ha	610	77582
Estimated population	Inhabitants	610	77582
Settlement			
Industrial	ha	0	37
Recreational	ha	0	5
Residential	ha	0	194
Transportation			
Motorways	km	0	143
Primary roads	km	0	56
Secondary roads	km	0	122
Local roads	km	1	407
Railways	km	0	65
Stations	No	0	3
Bridge	No	0	15
Land use			
Woodland	ha	1	42
Cropland	ha	190	105510
Grassland	ha	0	95
Scrub	ha	0	694
Woodland	ha	0	3295



Map Information

Heavy rainfall began late on Sunday, 1st December and caused severe floods across the Basilicata and Puglia regions, in particular in the Basento, Bradano and Metaponto basins in the Ionian area. Gradually the event affected also the Abruzzo region, in particular the towns of Chieti and Teramo. In the whole area, evacuation took place in several towns. In total, several hundreds of people have been evacuated.

Data Sources

Inset maps based on: Administrative boundaries (JRC 2013, GISCO 2010, © EuroGeographics), Hydrology, Transportation (Natural Earth, 2012, CCM River DB © EU-JRC 2007), Settlements (Geonames, 2013). Pre-event aerial orthoimages 2013 courtesy of AGEA (acquired in 2010, GSD 10 m). Spot-6 © Astrium Services 2013 (acquired on 05/12/2013 09:35 UTC, 1.5 m GSD) provided under ESA GSC-DA DWH License. Base vector layers based on Geoportale Nazionale © Ministero dell'Ambiente (<http://www.pcn.minambiente.it>) and OpenStreetMap © OpenStreetMap contributors, Geonames, Wikimapia.org (approx. 1:10,000, extracted on 03/12/2013), refined by e-GEOS. Source information is included in vector data. Population data: Landsat 2010 © UT BATTELLE, LLC. All Data sources are complete and with no gaps.

Dissemination/Publication

No restrictions on the publication of the mapping apply. Delivery formats are GeoTIFF, GeoPDF, GeoJPG and vectors (shapefile and KML formats).

Framework

The products elaborated in the framework of current mapping in rush mode activation are realized to the best of our ability, within a very short time frame during a crisis, optimising the available data and information. All geographic information has limitations due to scale, resolution, date and interpretation of the original data sources. The products are compliant with GIO-EMS RUSH Product Portfolio specifications.

Map Production

The present map shows basic topographic features such as transportation, hydrology and settlements in the area of Fortore basin, Puglia (ITALY). These basic topographic features are derived from public datasets, refined by means of visual interpretation of pre-event aerial orthoimages © 2013 courtesy of AGEA (acquired in 2010, GSD 10 m). Thematic layers, assessing the delineation of the event have been derived from post-event image Spot-6 © Astrium Services 2013 (acquired on 05/12/2013 09:35 UTC, 1.5 m GSD). The estimated geometric accuracy of this product is 5 m CE90 or better, from native positional accuracy of the background aerial orthoimage. The estimated thematic accuracy of this product is 85% or better, as it is based on visual interpretation of recognizable items on very high resolution optical imagery. Map produced on 10/12/2013 by e-GEOS under contract 257219 with the European Commission. All products are © of the European Commission. Name of the release inspector (quality control): GAF AG (ODO). E-mail: rush@ems-gmes.eu

