

Paracin - SERBIA Flood - 18/04/2014 Reference Map - Overview

Production date: 26/04/2014

Cartographic Information

1:70000

Full color A1, high resolution (300dpi)

Map Coordinate System: WGS 1984 UTM Zone 34N
Graticule: WGS 84 geographical coordinates

Legend

General Information

- Area of Interest
- Administrative boundaries
- Municipality
- Populated Place
- Built-Up Area

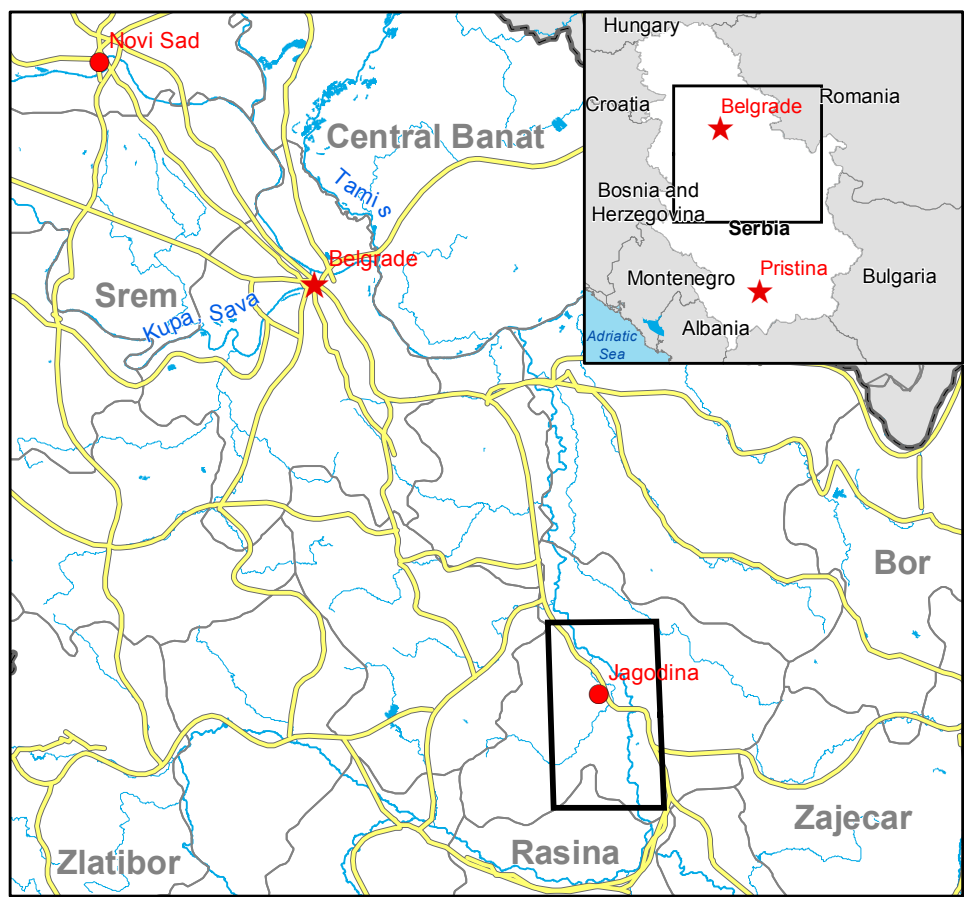
- Stream
- Lake
- Reservoir
- River

Transportation

- Aerodrome
- Bridge
- Station
- Railway
- Motorway
- Primary Road
- Secondary Road
- Local Road

Land use - Land cover Features available in vector data

Exposure within the Overview AOI			
Estimated population	inhabitants		139451
Settlements	Built-up area	ha	7767
	Motorways	km	53
Transportation	Primary roads	km	120
	Secondary roads	km	426
	Railways	km	81
	Aerodrome	No.	1
	Stations	No.	8
Vegetation	Forest	ha	29316
	Cropland	ha	69349
	Grassland	ha	203
	Scrub	ha	1303
	Wetland	ha	262



Map Information

From 16 to 17 April 2014 intense rainfalls followed with moderate snowfalls at higher altitude affected the western, eastern and southern parts of Serbia. Starting from 18 April the temperatures increased and caused the snow to melt rapidly in some lower areas which in connection with heavy rain fall caused extensive floods and emergency situation to be proclaimed in 14 Municipalities - Lučane, Požega, Kuršumlija, Medveđa, Prokuplje, Lebane, Doljevac, Gadžin Han, Žitorađa, Aleksinac, Mionica, Osečina Ljig, and Vrnjačka Banja.

Data Sources

Inset maps based on: Administrative boundaries (JRC 2013, GISC0 2010, © EuroGeographics), Hydrology, Transportation (Natural Earth, 2012, CCM River DB © EU-JRC 2007), Settlements (Geonames, 2013), SPOT-6 © Astrium (acquired on 25/08/2013 09:20, GSD 1.5 m, 0% cloud coverage). All rights reserved provided under ESA GSC-DA DWH License. Landset 1 © USGS (acquired in 2000 - 2010, GSD 15 m, 0% cloud coverage). Base vector layers based on UrbanAtlas © European Union, OpenStreetMap © OpenStreetMap contributors, Wikimapia.org, GeoNames (approx. 1:10,000, extracted on 01/01/2001), refined by SIRS. Source information is included in vector data. Elevation data: EU-DEM (25m posting). Height in meters above mean sea level. Population data: Landscan 2010 © UT

Dissemination/Publication

No restrictions on the publication of the mapping apply.
Delivery formats are GeoTIFF, GeoPDF, GeoPEG and vectors (shapefile and KML formats).

Framework

The products elaborated in the framework of current mapping in rush mode activation are realized to the best of our ability, within a very short time frame during a crisis, optimising the available data and information. All geographic information has limitations due to scale, resolution, date and interpretation of the original data sources. The products are compliant with GIO-EMS RUSH Product Portfolio specifications.

Map Production

The present map shows basic topographic features such as transportation, hydrology and settlements in the area of Paracin (Serbia). These basic topographic features are derived from public datasets, refined by means of visual interpretation of pre-event image from SPOT-6 © Astrium (acquired on 25/08/2013, GSD 1.5m, 0% cloud coverage). The estimated geometric accuracy of this product is 5m CE90 or better, from native positional accuracy of the background satellite image. The estimated thematic accuracy of this product is 85% or better, as it is based on visual interpretation of recognizable items on very high resolution optical imagery. Shadowed areas are zones of lower interpretation accuracy due to the poorer image radiometry. Only the area enclosed by the Area of Interest has been analyzed. Map produced on 26/04/2014 by SIRS under contract 257219 with the European Commission. All products are © of the European Commission. Name of the release inspector (quality control): GAF AG (ODO), E-mail: rush@ems-gmes.eu

Map products available at <http://emergency.copernicus.eu/mapping/list-of-components/EMSR079>

