

Doboj
BOSNIA AND HERZEGOVINA
Flood - 13/05/2012
Delineation Map - Detail 02

Production date: 18/05/2014

Cartographic Information

1:42000

Full color ISO A1, medium resolution (200 dpi)

0 0,75 1,5 3 km
Map Coordinate System: WGS 1984 UTM Zone 34N
Graticule: WGS 84 geographical coordinates



Legend

Crisis Information

Flooded Area (18/05/2014)

General Information

Area of Interest

Administrative boundaries

Municipality

Settlements

Populated Place

Settlements

Residential

Commercial

Green Area

Industrial

Recreational

Transportation

Hydrology

River

Stream

Lake

River

Point of Interest

Institutional

Medical

Industry / Utilities

Extraction Mine

Quarry

Processing Facility

Transportation

Bridge

Railway

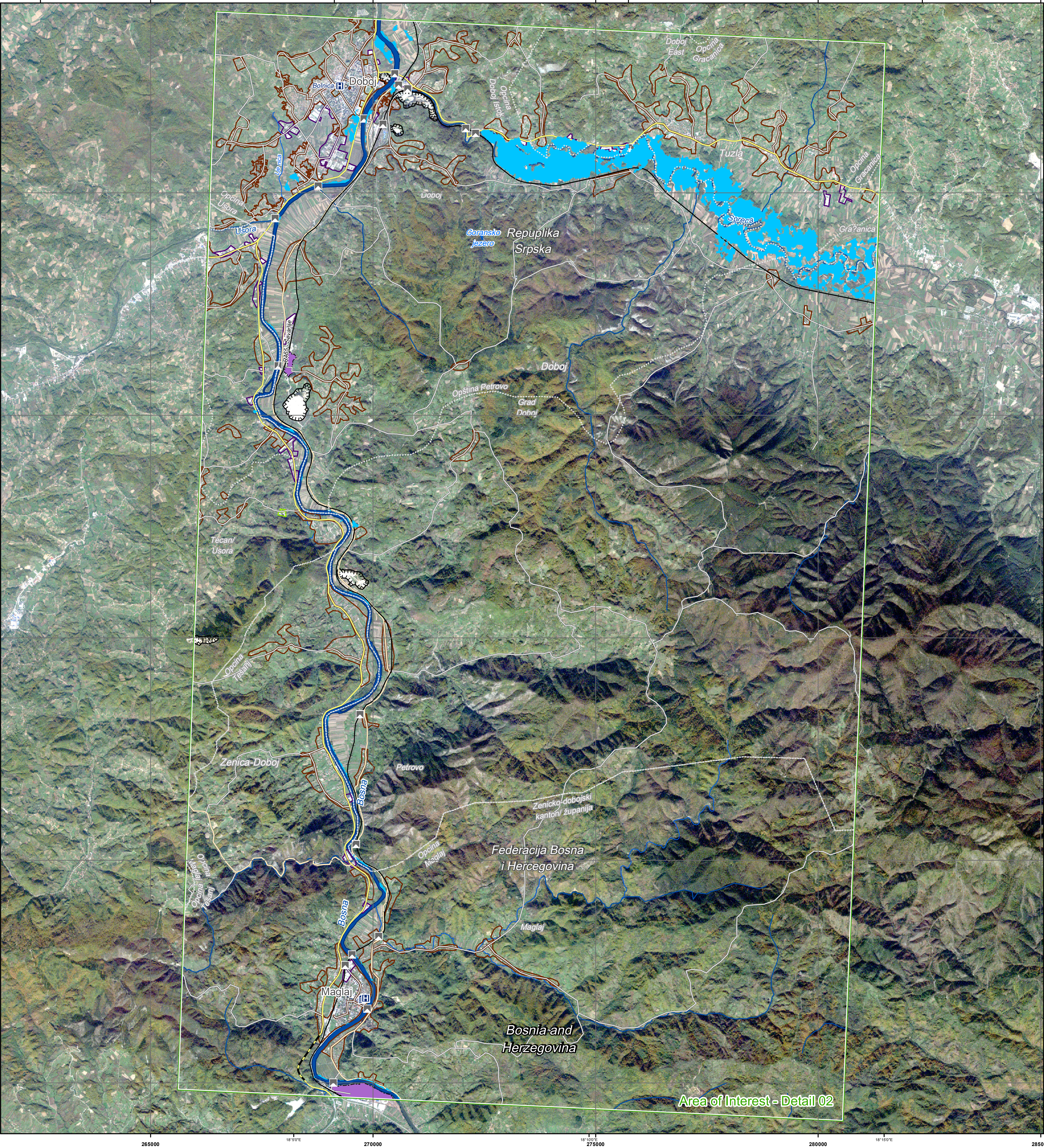
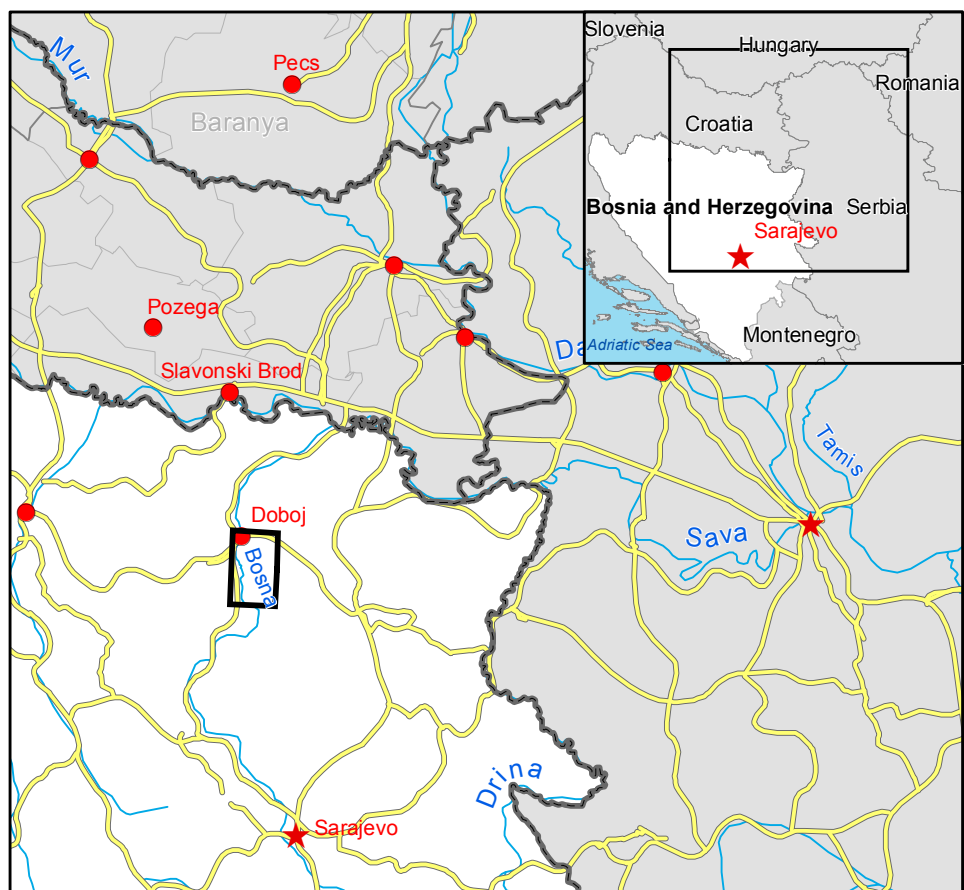
Primary Road

Secondary Road

Local Road

Tunnel

Consequences within the detail AOI on 18/05/2014					Affected	Total in AOI
Flooded area				ha	1255	
Estimated population				Inhabitants	360	87500
Settlements	Industrial			ha	7,7	137,7
	Commercial			ha	0	0,1
	Residential			ha	6,9	1708,7
	Recreational			ha	0	6,6
	Transportation			ha	3,8	34,5
Utilities	Green Area			ha	0	2,1
	Quarry			ha	0	76,6
	Extraction Mine			ha	0	0,2
Transportation	Processing Facility			ha	0	41,6
	Primary Road			km	4,1	41,9
	Secondary Road			km	14,1	34,0
	Local Road			km	0,7	210,8
	Railway			km	9,4	41,5



Map Information
On 13 May 2014, heavy rainfalls and widespread flooding hit large parts of Bosnia and Herzegovina. Heavy rainfall continued to affect large parts, in particular the region of Dobož and Zenica. The core users of the maps are Disaster Response Authorities involved in operations.

Data Sources
Inset maps based on: Administrative boundaries (JRC 2013, GISCO 2010, © EuroGeographics), Hydrology, Transportation (Natural Earth, 2012, CCM River DB © EU-JRC 2007), Settlements (Geonames, 2013).
RapidEye © Blackbridge (acquired on 23/10/2013 10:48 UTC and 21/03/2014 10:49 UTC, GSD 6,5 m, 0% cloud coverage), all rights reserved.
Landsat © USGS (acquired on 06/05/2014, GSD 15 m, 0% cloud coverage).
Radarsat-2 © MDA (acquired on 18/05/2014 05:09 UTC, GSD 15 m).
Base vector layers based on OpenStreetMap © OpenStreetMap contributors, refined by GAF AG.
Source information is included in vector data.
Population data: Landsat 2010 © UT BATTELLE, LLC.
Elevation data: SRTM (90 m posting). Height in meters above mean sea level.
All Data sources are complete and with no gaps.

Dissemination/Publication
No restrictions on the publication of the mapping apply.
Delivery formats are GeoTIFF, GeoPDF, GeoPEG and vectors (shapefile and KML formats).

Framework
The products elaborated in the framework of current mapping in rush mode activation are realized to the best of our ability, within a very short time frame during a crisis, optimising the available data and information. All geographic information has limitations due to scale, resolution, date and interpretation of the original data sources. The products are compliant with GIO-EMS RUSH Product Portfolio specifications.

Map Production
The present map shows basic topographic features such as transportation, hydrology and settlements in the area of Dobož (BOSNIA AND HERZEGOVINA). These basic topographic features are derived from public datasets, refined by means of visual interpretation of pre-event orthorectified imagery from RapidEye © Blackbridge (acquired on 23/10/2013 10:48 UTC and 21/03/2014 10:49 UTC, GSD 6,5 m, 0% cloud coverage).
Thematic layers, assessing the delineation of the event, have been derived from post-event image Radarsat-2 © MDA (acquired on 18/05/2014 05:09 UTC, GSD 15 m) Ltd. All rights reserved.
All satellite images have been radiometrically enhanced and orthorectified with RPC approach (using SRTM elevation data).
The estimated geometric accuracy of this product is 45 m CE90 or better, from native positional accuracy of the background satellite image.
The estimated thematic accuracy of this product is 85% or better, as it is based on visual interpretation of recognizable items on high resolution optical imagery. Shadowed areas are zones of lower interpretation accuracy due to the poorer image radiometry.
Only the area enclosed by the Area of Interest has been analyzed.
Map produced on 18/05/2014 by GAF AG under contract 257219 with the European Commission. All products are © of the European Commission.
Name of the release inspector (quality control): GAF AG (ODO).
Map produced on 18/05/2014 by GAF AG under contract 257219 with the European Commission. All products are © of the European Commission.

