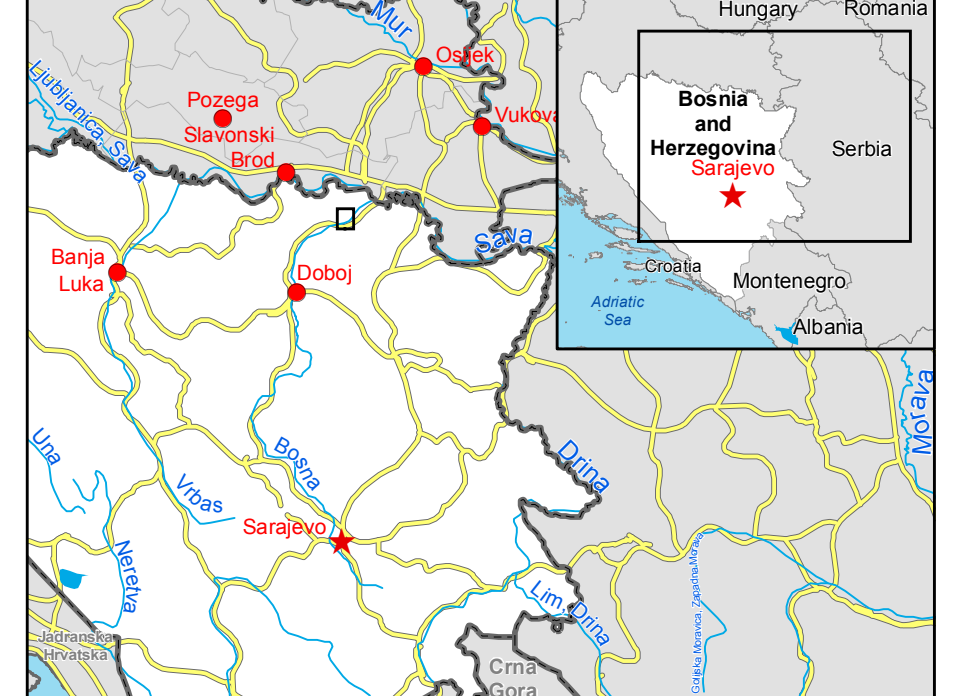




GLIDE number: FF-2014-000059-BIH Activation ID: EMSR-087
Product N.: 01DOBOJ, v1

Doboj BOSNIA AND HERZEGOVINA Flood - 13/05/2014 Delineation Map - Detail 03 - Monit 03 Production date: 25/05/2014



Cartographic Information

1:15000 Full color ISO A1, medium resolution (200 dpi)
0 0,25 0,5 1 km
Grid: WGS 1984 UTM Zone 34N map coordinate system
Tick marks: WGS 84 geographical coordinate system

- ### Legend
- Crisis Information**
 - Flooded Area (25/05/2014 05:04 UTC)
 - Old Flooded Area (23/05/2014 10:03 UTC)
 - General Information**
 - Area of Interest
 - Sensor Footprint
 - Administrative boundaries**
 - Municipality
 - Settlements**
 - Populated Place
 - Residential
 - Green Area
 - Industrial
 - Urbanized
 - Multi-functional
 - Point of Interest**
 - Religious
 - Transportation**
 - Bridge
 - Primary Road
 - Secondary Road
 - Local Road
 - Railway
 - Hydrology**
 - River
 - Lake
 - River

Consequences within the detail AOI on 25/05/2014			
		Affected	Total in AOI
Flooded area		he	41,3
Estimated population		Inhabitants	0
Transportation	Primary Road	km	0,1

Map Information

On 13 May 2014, heavy rainfalls and widespread flooding hit large parts of Bosnia and Herzegovina. Heavy rainfall continued to affect large parts, in particular the region of Doboj and Zrnica. The core users of the maps are Disaster Response Authorities involved in operations.

Data Sources

Inset maps based on: Administrative boundaries (JRC 2013, GISC0 2010, © EuroGeographics), Hydrology, Transportation (Natural Earth, 2012, CCM River DB © EU-JRC 2007), Settlements (Geonames, 2013).
RapidEye © BlackBridge (acquired on 23/10/2013 10:49 UTC, GSD 6.5 m, 0% cloud coverage), all rights reserved.
RadarSat-2 © MDA (acquired on 22/05/2014 04:52 UTC, GSD 5 m and 25/05/2014 05:04 UTC, GSD 5 m) Ltd. All rights reserved.
Pleides © Airbus Defence and Space 2014 (acquired on 23/05/2014 10:03 UTC, GSD 0.5 m) Ltd. All rights reserved.
Base vector layers based on OpenStreetMap © OpenStreetMap contributors, refined by GAF AG. Source information is included in vector data.
Population data: Landscan 2010 © UT BATTELLE, LLC.
Elevation data: SRTM (90 m posting). Height in meters above mean sea level.

Dissemination/Publication

No restrictions on the publication of the mapping apply.
Delivery formats are GeoTIFF, GeoPDF, GeoJPEG and vectors (shapefile and KML formats).


Framework

The products elaborated in the framework of current mapping in rush mode activation are realized to the best of our ability, within a very short time frame during a crisis, optimising the available data and information. All geographic information has limitations due to scale, resolution, date and interpretation of the original data sources. The products are compliant with GIO-EMS RUSH Product Portfolio specifications.

Map Production

The present map shows basic topographic features such as transportation, hydrology and settlements in the area of Doboj (BOSNIA AND HERZEGOVINA). These basic topographic features are derived from public datasets, refined by means of visual interpretation of pre-event orthomage from RapidEye © BlackBridge (acquired on 23/10/2013 10:49 UTC, GSD 6.5 m, 0% cloud coverage).
Thematic layers, assessing the delineation of the event, have been derived from post-event images RadarSat-2 © MDA (acquired on 22/05/2014 04:52 UTC, GSD 5 m and 25/05/2014 05:04 UTC, GSD 5 m) Ltd. all rights reserved, Pleides © Airbus Defence and Space 2014 (acquired on 23/05/2014 10:03 UTC, GSD 0.5 m) Ltd. All rights reserved.
All satellite images have been radiometrically enhanced and orthorectified with RPC approach (using SRTM elevation data).
The estimated geometric accuracy of this product is 35 m CE90 or better, from native positional accuracy of the background satellite image.
The estimated thematic accuracy of this product is 85% or better, as it is based on visual interpretation of recognizable items on high resolution optical imagery. Shadowed areas are zones of lower interpretation accuracy due to the poorer image radiometry.
Only the area enclosed by the Area of Interest has been analyzed.
Map produced on 25/05/2014 by GAF AG under contract 257219 with the European Commission. All products are © of the European Commission.
Name of the release inspector (quality control): GAF AG (ODO).
E-mail: rush@ems-gmes.eu

Map products available at <http://emergency.copernicus.eu/mapping/list-of-components/EMSR087>



Flood

- Civil Protection
- Response
- Delineation Map - Detail Monit 03
- Planning
- RADARSAT-2 © MDA
- 13-05-2014

