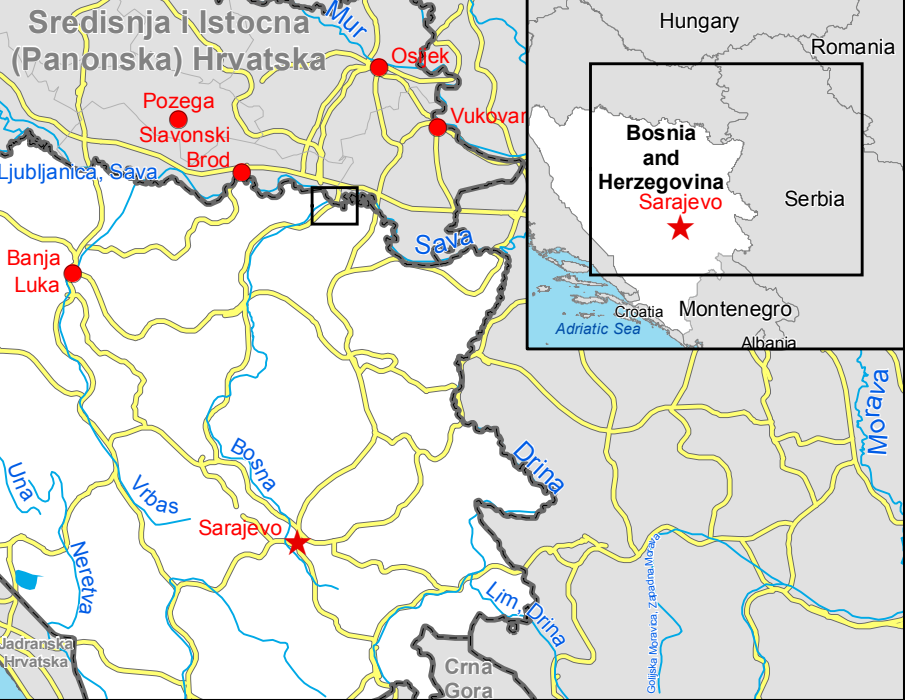


Doboj BOSNIA AND HERZEGOVINA Flood - 13/05/2014 Reference Map - Detail 01

Production date: 17/05/2014



Cartographic Information

1:26000 Full color ISO A1, medium resolution (200 dpi)

0 0.5 1 2 km

Grid: WGS 1984 UTM Zone 34N map coordinate system
Tick marks: WGS 84 geographical coordinate system

Legend	
General Information	
Area of Interest	Populated Place
Administrative boundaries	
Region	Residential
Municipality	Agricultural
Point of Interest	
Medical	Cemetery
Religious	Educational
	Industrial
	Religious
	Urbanized
	Multi-functional
Transportation	
Bridge	Motorway
Railway	Primary Road
	Secondary Road
	Local Road
Industry / Utilities	
	Quarry
	Processing Facility
Hydrology	
River	
Canal	
Lake	
River	

Exposure within the detail AOI		
Estimated population	Inhabitants	42600
Settlements		
Industrial	ha	76,0
Residential	ha	1193,1
Religious	ha	1,0
Urbanized Multifunctional	ha	35,1
Educational	ha	3,3
Cemetery	ha	11,1
Utilities		
Quarry	ha	9,1
Processing Facility	ha	1,9
Transportation		
Motorway	km	3,9
Primary	km	20,9
Secondary	km	31,4
Local Road	km	131,6
Railway	km	19,6

Map Information

On 13 May 2014, heavy rainfalls and widespread flooding hit large parts of Bosnia and Herzegovina. Heavy rainfall continued to affect large parts, in particular the region of Doboj and Zenica. The core users of the maps are Disaster Response Authorities involved in operations.

Data Sources

Inset maps based on: Administrative boundaries (JRC, 2013, GISC0 2010, © EuroGeographics), Hydrology, Transportation (Natural Earth, 2012, CCM River DB © EU-JRC 2007), Settlements (Geonames, 2013).

RapidEye © Blackbridge (acquired on 23/10/2013 10:48 10:49, GSD 6,5 m, 0% cloud coverage), all rights reserved.

Base vector layers based on OpenStreetMap © OpenStreetMap contributors, refined by GAF AG. Source information is included in vector data.

Population data: Landsat 2010 © UT BATTELLE, LLC.

Elevation data: SRTM (90m posting). Height in meters above mean sea level.

All Data sources are complete and with no gaps.

Dissemination/Publication

No restrictions on the publication of the mapping apply.

Delivery formats are GeoTIFF, GeoPDF, GeoJPEG and vectors (shapefile and KML formats).

Framework

The products elaborated in the framework of current mapping in rush mode activation are realized to the best of our ability, within a very short time frame during a crisis, optimising the available data and information. All geographic information has limitations due to scale, resolution, date and interpretation of the original data sources. The products are compliant with GIO-EMS RUSH Product Portfolio specifications.

Map Production

The present map shows basic topographic features such as transportation, hydrology and settlements in the area of Doboj (BOSNIA AND HERZEGOVINA). These basic topographic features are derived from public datasets, refined by means of visual interpretation of pre-vent orthomosaic from RapidEye © Blackbridge (acquired on 23/10/2013, GSD 6,5m, 0% cloud coverage).

All satellite images have been radiometrically enhanced and orthorectified with RPC approach (using SRTM elevation data).

The estimated geometric accuracy of this product is 45m CE90 or better, from native positional accuracy of the background satellite image.

The estimated thematic accuracy of this product is 85% or better, as it is based on visual interpretation of recognizable items on high resolution optical imagery. Shadowed areas are zones of lower interpretation accuracy due to the poorer image radiometry.


Only the area enclosed by the Area of Interest has been analyzed.

Map produced on 17/05/2014 by GAF AG under contract 257219 with the European Commission. All products are © of the European Commission.

Name of the release inspector (quality control): GAF AG (ODO).

E-mail: rush@ems-gmes.eu

Map products available at <http://emergency.copernicus.eu/mapping/list-of-components/EMSR087>



Flood

- Civil Protection
- Response
- Reference Map - Detail
- Planning
- RapidEye © Blackbridge
- 13-05-2014

