

Production date: 24/05/2014

Production date: 24/05/2014

1:118000












Full color ISO A1, medium resolution (200 dpi)

0 2.5 5 10 km


Map Coordinate System: WGS 1984 UTM Zone 34N
Graticule: WGS 84 geographical coordinates

Map Coordinate System: WGS 1984 UTM Zone 34N
Graticule: WGS 84 geographical coordinates

General Information

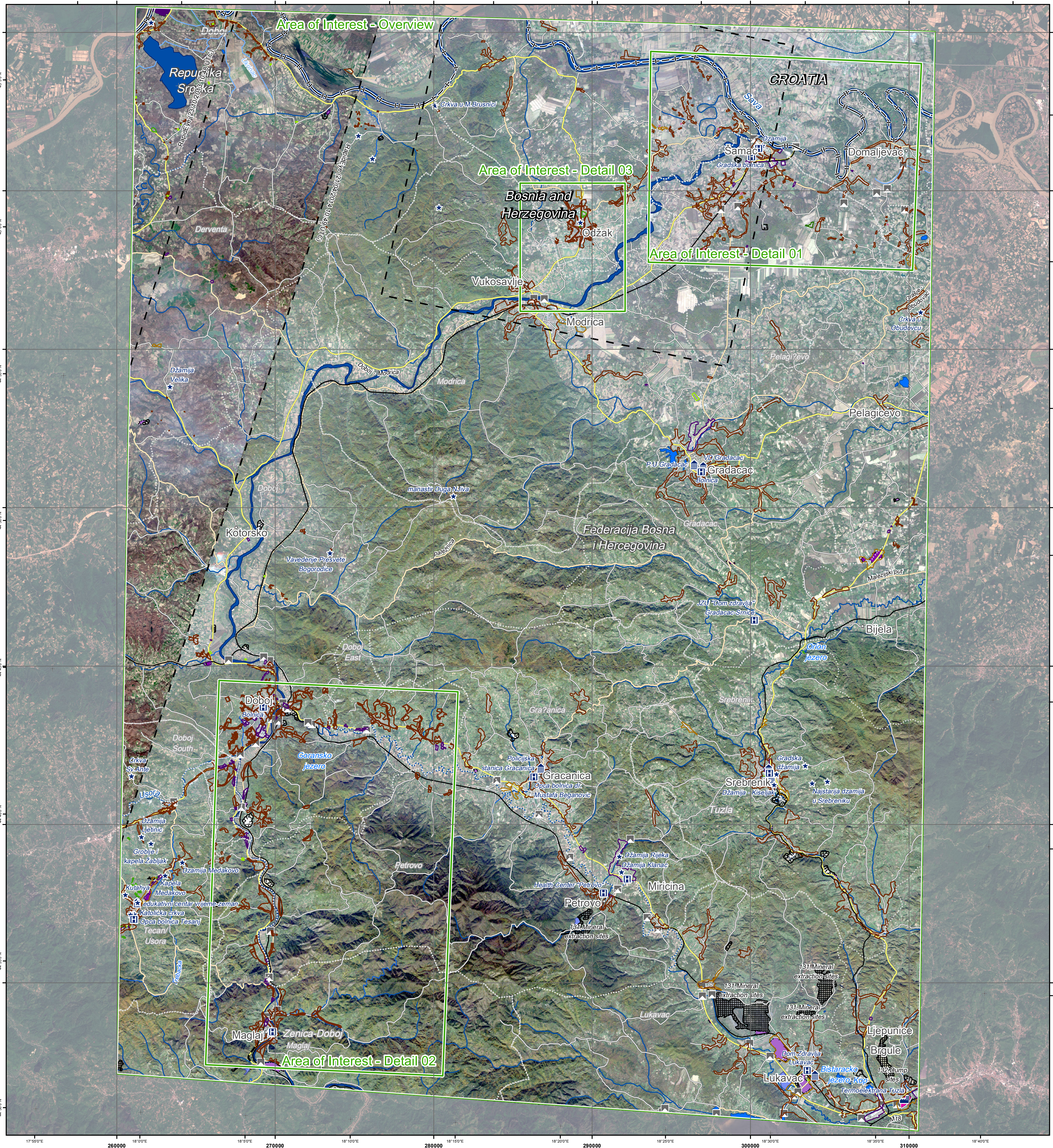
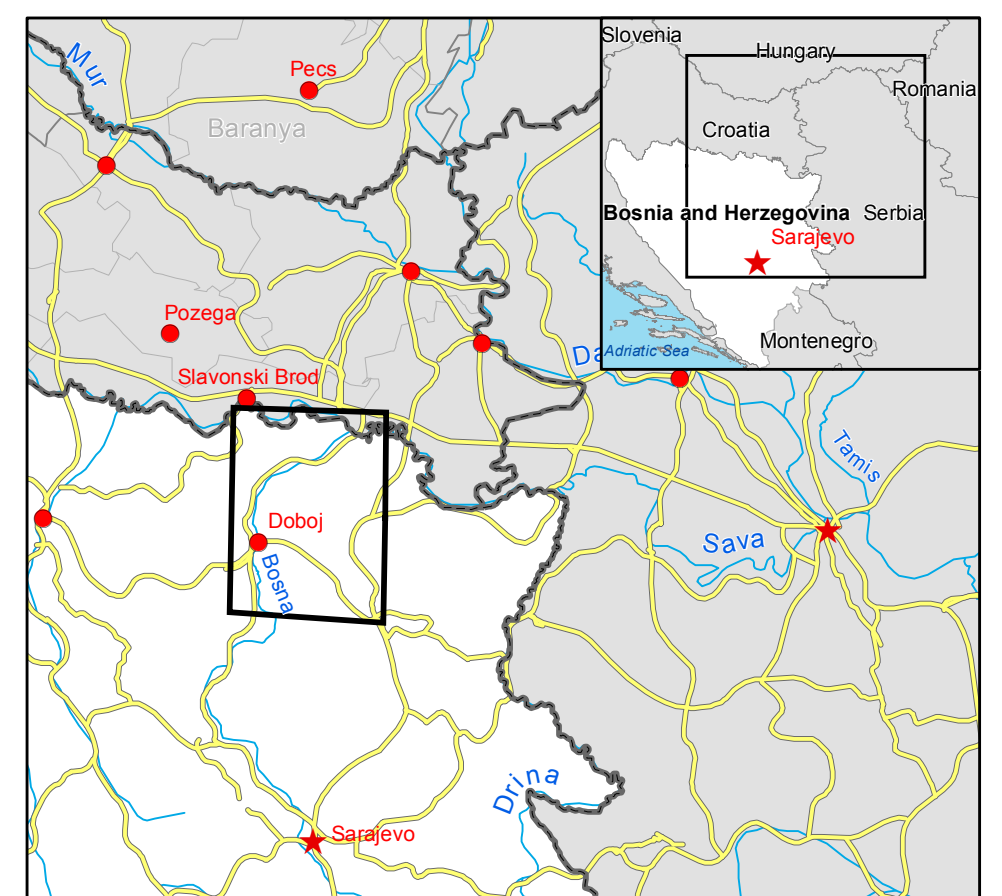
-  Area of Interest
 Sensor Footprint
Administrative boundaries
 International Boundary
 Region
 Municipality
Settlements
 Populated Place
 Residential
 Agricultural
 Cemetery
 Commercial
 Educational

- Hydrology**
- Dam
 - River
 - Stream
 - Canal
 - Lake
 - Reservoir
 - River

- Point of Interest**
-  Industrial
 -  Institutional
 -  Medical
 -  Religious
- Industry / Utilities**
-  Storage Tank
 -  Extraction Mine
 -  Quarry
 -  Power Station
 -  Power Substation
 -  Processing Facility
 -  Storage Depot

- ### Transportation
- Bridge
 - Motorway
 - Primary Road
 - Secondary Road
 - Local Road
 - Railway
 - Tunnel

Exposure within the overview AOI within the Bosnian territory			
Estimated population		inhabitants	510000
Settlements	Industrial	ha	996.8
	Commercial	ha	1.4
	Residential	ha	13502.8
	Religious	ha	1.0
	Recreational	ha	50.2
	Urbanized Multifunctional	ha	880.7
	Transportation	ha	106.2
	Educational	ha	3.3
	Green Area	ha	37.6
	Cemetery	ha	11.1
Utilities	Agricultural	ha	8.8
	Storage Depot	ha	69.4
	Storage Tank	ha	50.4
	Extraction Mine	ha	963.1
	Quarry	ha	263.5
	Processing Facility	ha	263.4
	Power Station	ha	43.8
Transportation	Power Substation	ha	1.1
	Motorway	km	14.7
	Primary	km	332.8
	Secondary	km	373.9
	Local Road	km	1571.1
	Railway	km	212.9



On 13 May 2014, heavy rainfalls and widespread flooding hit large parts of Bosnia and Herzegovina. Heavy rainfall continued to affect large parts, in particular the region of Doboј and Zenica. The core users of the maps are Disaster Response Authorities involved in operations.

No restrictions on the publication of the mapping apply.
Delivery formats are GeoTIFF, GeoPDF, GeoJPEG and vectors (shapefile and KML formats).

Insert maps based on: Administrative boundaries (JRC 2013, GISCO 2010, © EuroGeographics), Hydrology, Transportation (Natural Earth, 2012, CCM River DB © EUJ-ECR), Settlements (GeoNames, 2013).
 RapidEye © Blackbridge (acquired on 23/10/2013 10:48 and 21/03/2014 10:49, GSD 6.5 m, 0% cloud coverage), all rights reserved.
 Landsat © USGS (acquired on 06/05/2014, GSD 15m, 0% cloud coverage).
 Base vector layers based on OpenStreetMap © OpenStreetMap contributors, refined by GAF AG.
 Source information is included in the metadata.
 Population data: Landsat 2010 © UT BATELLE, LLC.
 Elevation data: SRTM (90m posting). Height in meters above mean sea level.
 All Data sources are complete and with no gaps.

The products elaborated in the framework of current mapping in rush mode activation are realized to the best of our ability, within a very short time frame during a crisis, optimising the available data and information. All geographic information has limitations due to scale, resolution, date and interpretation of the original data sources. The products are compliant with GIO-EMS RUSH Product Portfolio specifications.

The present map shows basic topographic features such as transportation, hydrology and settlements in the area of Doboj (BOSNIA AND HERZEGOVINA). These basic topographic features are derived from public datasets, refined by means of visual interpretation of pre-event orthophotography from Google Earth and georeferenced to the UTM projection, datum 1973, 43QSD 55, 0% cloud coverage. All satellite images have been radiometrically enhanced and orthorectored with RPC approach (using SRTM elevation data).

The estimated geometric accuracy of this product is 45m CE90 or better, from native positional accuracy of the input background satellite image.

The estimated thematic accuracy of this product is 85% or better, as it is based on visual interpretation of recognizable items on high resolution optical imagery. Shadowed areas are zones of lower accuracy due to the geometry of the terrain.

Only the area covered by the Areas of Interest has been analyzed within the Bosnian territory.

Map produced on 24/05/2014 by GAF AG under contract 252152 with the European Commission. All products are © of the European Commission.

Name of the release inspector (quality control): GAF AG (ODO).

E-mail: rush@ems-smis.eu



Map products available at <http://emergency.copernicus.eu/mapping/list-of-components/EMSR087>