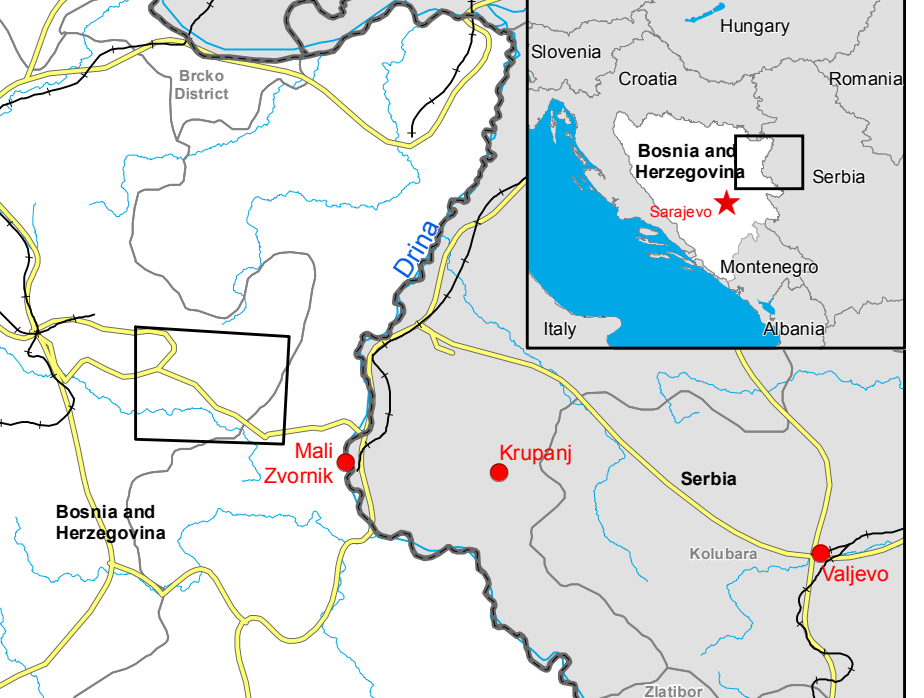


Area of Interest - Detail 01

GLIDE number: N/A Activation ID: EMSR-087
Product N.: 03Vlasenica, v1

Vlasenica BOSNIA AND HERZEGOVINA Flood - 13/05/2014 Delineation Map - Detail 01

Production date: 20/05/2014



Cartographic Information

1:33000 Full color ISO A1, medium resolution (200 dpi)

0 0.5 1 2 km

Grid: WGS 1984 UTM Zone 34N map coordinate system
Tick marks: WGS 84 geographical coordinate system

Legend

- Crisis Information**
 - Flooded Area (18/05/2014)
- General Information**
 - Area of interest
- Administrative boundaries**
 - Region
- Settlements**
 - Populated Place
 - Residential
 - Industrial
- Hydrology**
 - River
 - Stream
 - Lake
- Point of Interest**
 - Educational
 - Medical
 - Religious
 - Transportation
- Transportation**
 - Bridge
 - Primary Road
 - Secondary Road
 - Local Road

Consequences within the DTL01 AOI on 18/05/2014				
Flooded/Affected area		ha	Affected	Total in AOI
Estimated population		Inhabitants	0	44922
Settlements		Industrial	ha	0
		Residential	ha	1243
Transportation		Primary roads	km	29
		Secondary roads	km	104
		Local roads	km	84
		Stations	No.	2

Map Information

On 13 May 2014, heavy rainfalls and widespread flooding hit large parts of Bosnia and Herzegovina. Heavy rainfall continues to affect large parts, in particular the region of Doboj and Zenica. The core users of the maps are Disaster Response Authorities involved in

Data Sources

Inset maps based on: Administrative boundaries (JRC 2013, GISCO 2010, © EuroGeographics), Hydrology, Transportation (Natural Earth, 2012, CCM River DB © JRC 2007), Settlements (Geonames, 2013).
Landsat® U.S. Geological Survey acquired on 12/03/2014, GSD 15m, approx.0% cloud coverage).
RapidEye® BlackBridge (acquired on 22/10/2013 10:46 UTC, GSD 6 m 5% cloud coverage).
RADARSAT-2 © MDA post event imagery (15 m. resolution, acquired on 18/05/2014 at 16:28 UTC).
Base vector layers based on OpenStreetMap © OpenStreetMap contributors, Wikimapia.org, GeoNames (approx. 1:10,000, extracted on 16/05/2014), refined by e-GEOS. Source information is included in vector data.
Elevation data: SRTM (90m posting) or EU-DEM (25m posting). Height in meters above mean sea level.
Population data: Landsat 2010 © UT BATTELLE, LLC.
All Data sources are complete and with no gaps.

Dissemination/Publication

No restrictions on the publication of the mapping apply.
Delivery formats are GeoTIFF, GeoPDF, GeoJPEG and vectors (shapefile and KML formats).

Framework

The products elaborated in the framework of current mapping in rush mode activation are realized to the best of our ability, within a very short time frame during a crisis, optimising the available data and information. All geographic information has limitations due to scale, resolution, date and interpretation of the original data sources. The products are compliant with GIO-EMS RUSH Product Portfolio specifications.

Map Production

The present map shows basic topographic features such as transportation, hydrology and settlements in the area of Vlasenica (BOSNIA AND HERZEGOVINA). These basic topographic features are derived from public datasets, refined by means of visual interpretation of pre-event satellite imagery from RapidEye® BlackBridge (acquired on 22/10/2013 10:46 UTC, GSD 6 m. approx. 5% cloud coverage) and Landsat® U.S. Geological Survey acquired on 12/03/2014, GSD 15m, approx.0% cloud coverage). The thematic layer assessing the delineation of the event has been derived from RADARSAT-2 © MDA post event imagery (15m resolution, acquired on 18/05/2014 at 16:28 UTC). The estimated geometric accuracy of this product is 5m or better, from native positional accuracy of the background satellite image of the aerial orthoimages. The thematic accuracy of this product is 85% or better, as it is based on previous experience in using medium-resolution SAR images for flood extent delineation. Please be aware that the thematic accuracy might be lower in urban and forested areas due to known limitation of the analysis technique. Only the area enclosed by the Area of Interest has been analyzed. Map produced on 20/05/2014 by e-GEOS under contract 257219 with the European Commission. All products are © of the European Commission. Name of the release inspector (quality control): e-GEOS (ODO). E-mail: rush@ems-gmes.eu

Map products available at <http://emergency.copernicus.eu/mapping/list-of-components/EMSR087>

Flood

- Civil Protection
- Response
- Delineation Map - Detail
- Planning
- RADARSAT-2 (c) MDA
- 13-05-2014