

Vlasenica - BOSNIA Flood - 13/05/2014 Delineation Map - Overview

Production date: 20/05/2014

Cartographic Information

1:120000

Full color ISO A1, medium resolution (200 dpi)

Map Coordinate System: WGS 1984 UTM Zone 34N
Graticule: WGS 84 geographical coordinates

Legend

Crisis Information

Flooded Area (18/05/2014)

General Information

Area of Interest

Administrative boundaries

International Boundary

Region

Settlements

Populated Place

Residential

Commercial

Industrial

Transportation

Bridge

Station

Crossing

Railway

Primary Road

Secondary Road

Aerodrome

Hydrology

Reservoir

River

Stream

Lake

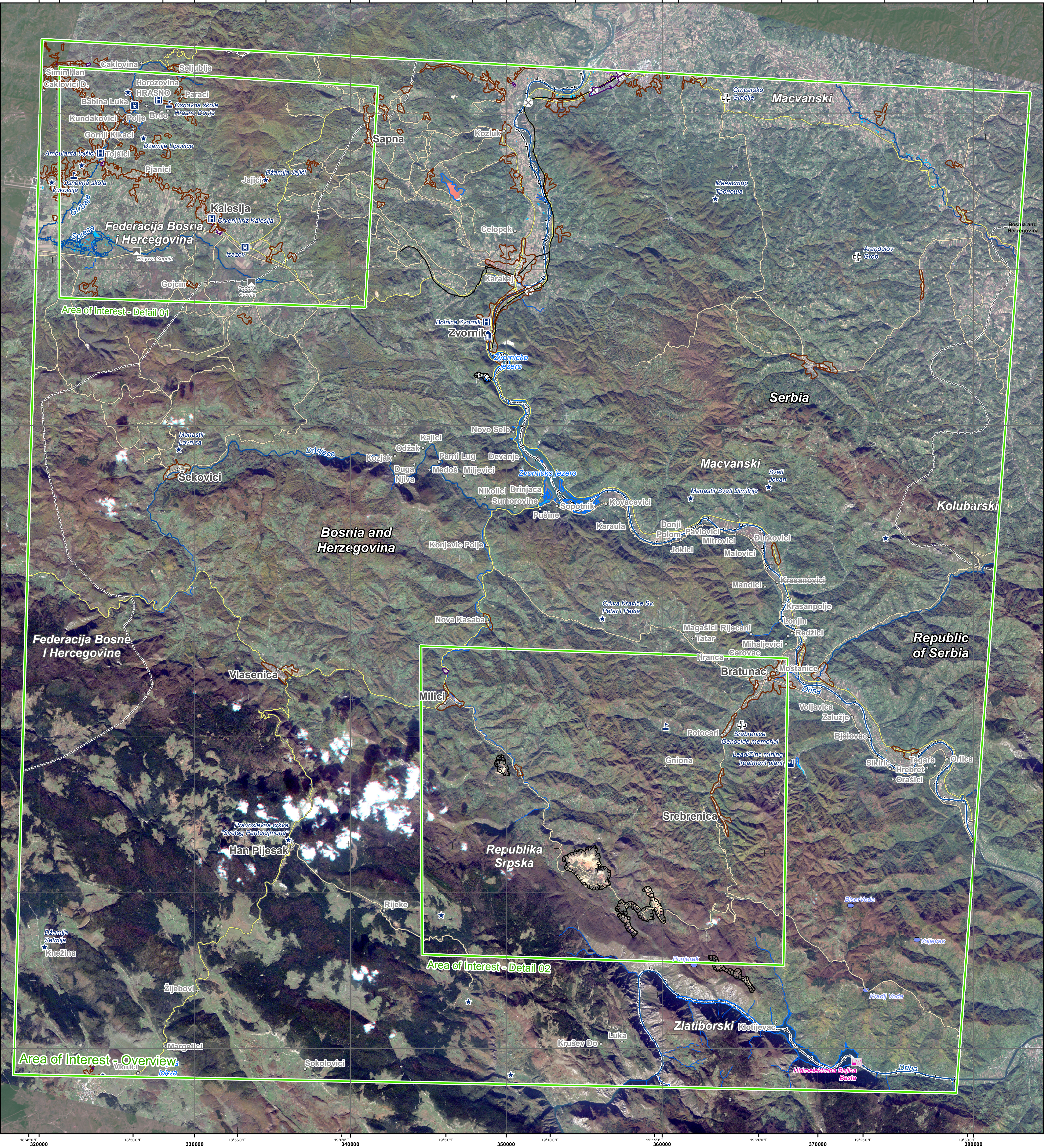
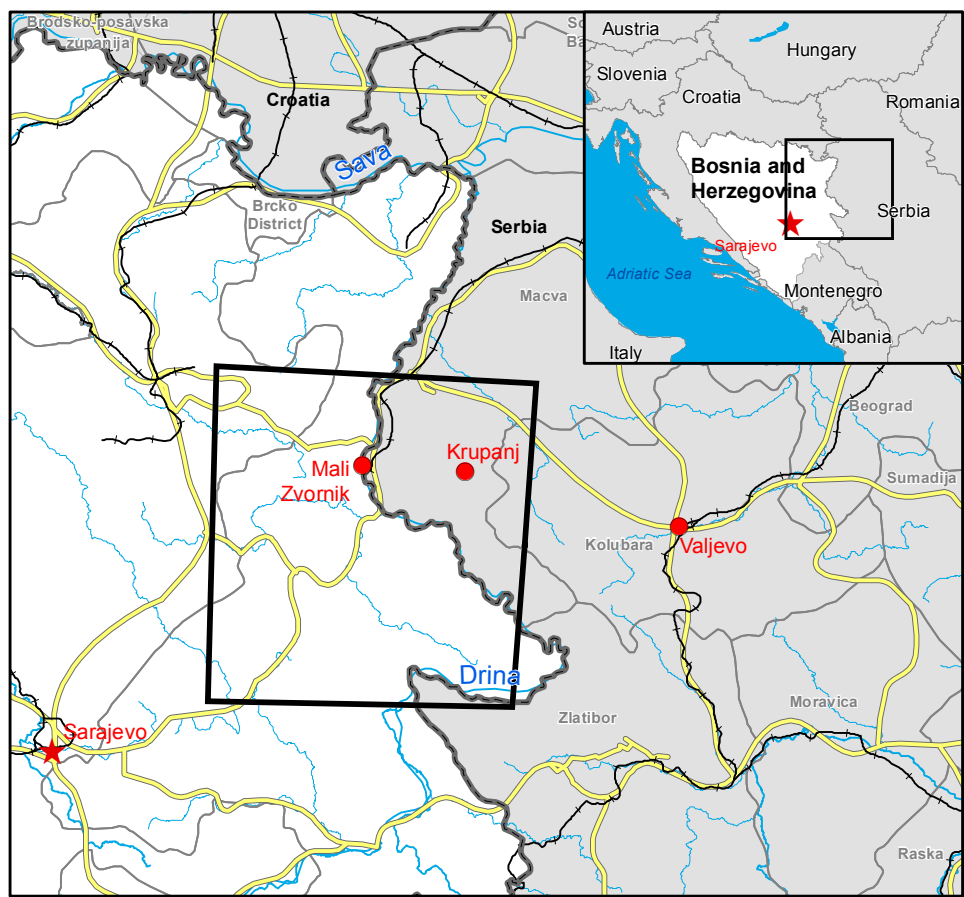
Industry / Utilities

Power Station

Quarry

Consequences within the overview AOI on 18/05/2014

		Affected	Total in AOI
Flooded area	na	83	
Estimated population	Inhabitants	0	301944
Settlements	Commercial	na	2
	Industrial	na	400
	Residential	na	4205
Transportation	Primary roads	km	230
	Secondary roads	km	232
	Aerodrome	No.	1
	Railways	Km	53
	Station	No.	2
	Bridges	No.	2
Utilities	Quarry	na	872



Map Information

On 13 May 2014, heavy rainfalls and widespread flooding hit large parts of Bosnia and Herzegovina. Heavy rainfall continues to affect large parts, in particular the region of Doboj and Zenica. The core users of the maps are Disaster Response Authorities involved in operations.

Data Sources

Inset maps based on: Administrative boundaries (JRC 2013, GISCO 2010, © EuroGeographics), Hydrology, Transportation (Natural Earth, 2012, CCM River DB © EU-JRC 2007), Settlements (Geonames, 2013). Landsat © U.S. Geological Survey acquired on 22/10/2013 10:46 UTC, GSD 15m, approx. 0% cloud coverage). RapidEye BlackBridge (acquired on 22/10/2013 10:46 UTC, GSD 6 m, approx. 5% cloud coverage). RADARSAT-2@MDA post event imagery (15 m. resolution, acquired on 18/05/2014 at 16:28 UTC). Base vector layers based on OpenStreetMap © OpenStreetMap contributors, Wikimapia.org, GeoNames (approx. 1:10,000, extracted on 18/05/2014), refined by e-GEOS. Source information is included in vector data. Elevation data: SRTM (90m posting) or EU-DEM (25m posting). Height in meters above mean sea level. Population data: Landscan 2010 © UT BATTELLE, LLC. All Data sources are complete and with no gaps.

Dissemination/Publication

No restrictions on the publication of the mapping apply. Delivery formats are GeoTIFF, GeoPDF, GeoPES and vectors (shapefile and KML formats).

Framework

The products elaborated in the framework of current mapping in rush mode activation are realized to the best of our ability, within a very short time frame during a crisis, optimising the available data and information. All geographic information has limitations due to scale, resolution, date and interpretation of the original data sources. The products are compliant with GIO-EMS RUSH Product Portfolio specifications.

Map Production

The present map shows basic topographic features such as transportation, hydrology and settlements in the area of Vlasenica (BOSNIA AND HERZEGOVINA). These basic topographic features are derived from public datasets, refined by means of visual interpretation of pre-event satellite imagery from RapidEye® BlackBridge (acquired on 22/10/2013 10:46 UTC, GSD 6 m, approx. 5% cloud coverage) and Landsat © U.S. Geological Survey acquired on 12/03/2014, GSD 15m, approx. 0% cloud coverage). Thematic layer assessing the delineation of the flood event has been derived from RADARSAT-2@MDA post event imagery (15 m. resolution, acquired on 18/05/2014 at 16:28 UTC). The estimated geometric accuracy of this product is 5m or better, from native positional accuracy of the background satellite image of the aerial orthomages. Shadowed areas are zones of lower interpretation accuracy due to the poorer image radiometry. Only the area enclosed by the Area of Interest has been analyzed. Map produced on 20/05/2014 by e-GEOS under contract 257219 with the European Commission. All products are © of the European Commission. Name of the release inspector (quality control): e-GEOS (ODO). E-mail: rush@ems-gmes.eu

