

Production date: 19/05/2014

### Cartographic Information

1:120000

Full color ISO A1, medium resolution (200 dpi)

Map Coordinate System: WGS 1984 UTM Zone 34N  
Graticule: WGS 84 geographical coordinates

Map Coordinate System: WGS 1984 UTM Zone 34N  
Graticule: WGS 84 geographical coordinates

### Legend

## General Information

 Area of Interest









### Administrative boundaries

—+— · International Boundary  
- - - · Region







## Settlements

- Populated Place
- ▭ Residential
- ▭ Commercial
- ▭ Industrial



## Transportation

-  Bridge
-  Crossing
-  Bridge
-  Railway
-  Motorway
-  Primary Road
-  Secondary Road
-  Aerodrome

## Hydrology

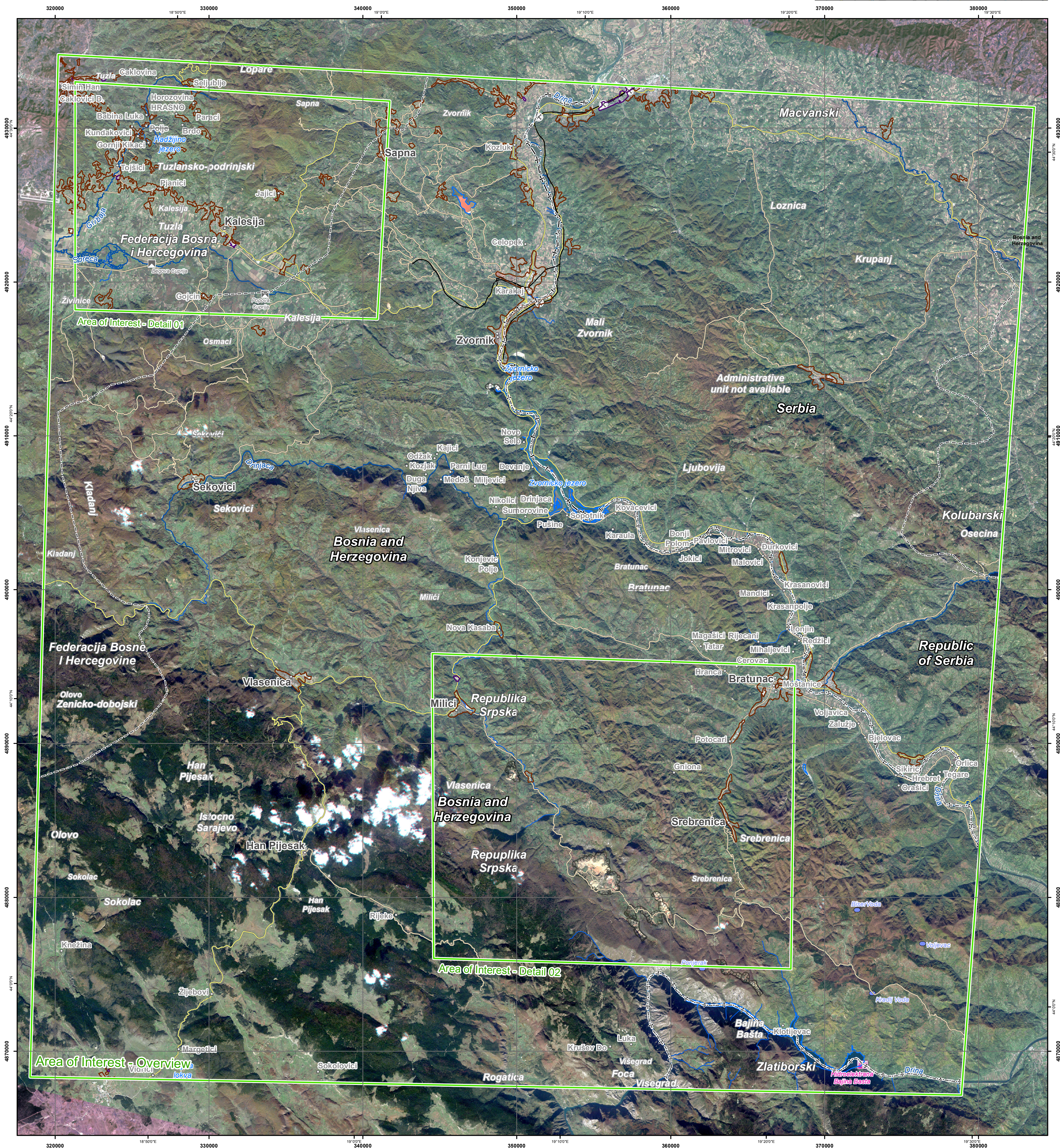
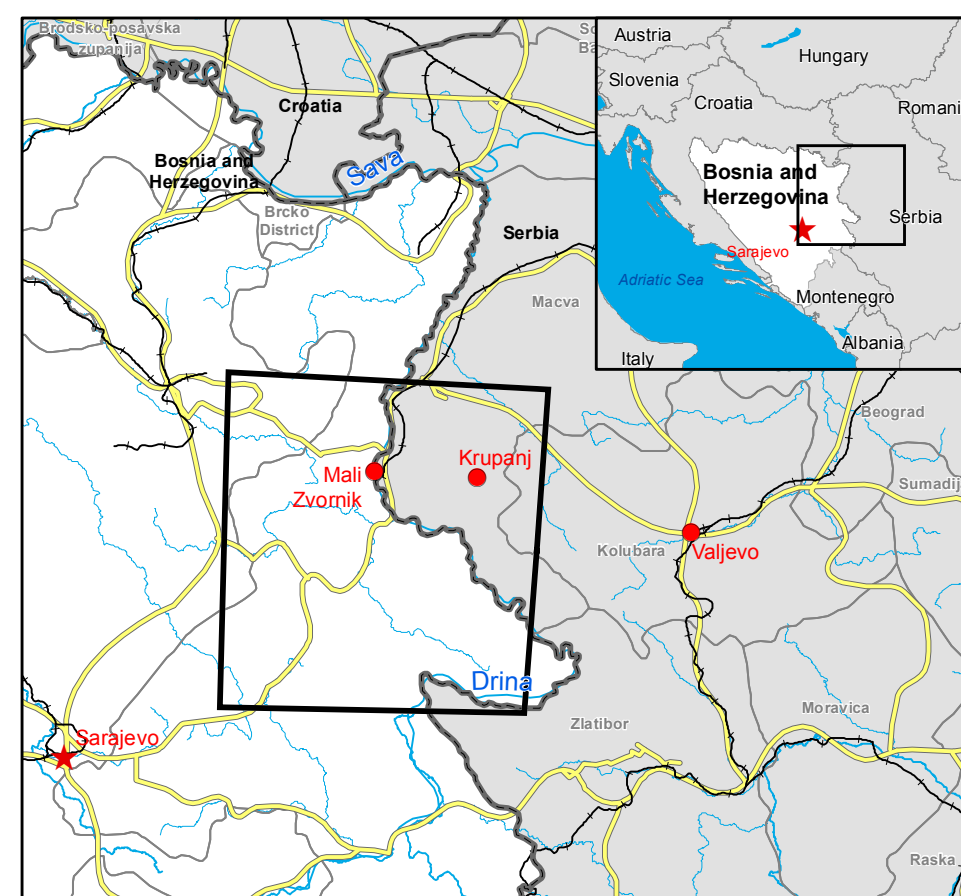
 Reservoir  
 River  
 Stream  
 Lake  
 Reservoir  
 River

**Industry / Utilitie**

 Power Station  
 Quarry

## Exposure within the overview AO

Estimated population	inhabitants		301944
Settlements	Commercial	ha	1,85
	Industrial	ha	400
	Residential	ha	4205
Transportation	Primary roads	km	230
	Secondary roads	km	232
	Local roads	km	277
	Railways	km	53
	Stations	No.	2
Utilities	Quarry	ha	872



### Map Information

On 13 May 2014, heavy rainfalls and widespread flooding hit large parts of Bosnia and Herzegovina. Heavy rainfall continues to affect large parts, in particular the region of Doboj and Zenica. The core users of the maps are Disaster Response Authorities involved in operations.

## Data Sources

Inset maps based on: Administrative boundaries (JRC 2013, GISCO 2010, © EuroGeographics), Hydrology, Transportation (Natural Earth, 2012, CCM River DB © EU-JRC 2007), Settlements (Geonames, 2013).

Landsat © U.S. Geological Survey acquired on 12/03/2012, GSD 15m, approx. 5% cloud coverage). RapidEye® (Bluebeam) acquired on 22/01/2013 (0.6 m GSD, 10 m, approx. 5% cloud coverage).

OpenStreetMap (OSM) layers based on OpenStreetMap © OpenStreetMap contributors, Wikipedia.org, GeoNames (approx. 1:10,000, extracted on 16/05/2014), refined by e-GEOSS. Source information is included in vector data.

Elevation data: SRTM (90m posting) or EU-DEM (25m posting). Height in meters above mean sea level.

Population data: Landsat 2010 © UT BATTELLE, LLC.

All data sources are complete and with no gaps...

### Dissemination/Publication

No restrictions on the publication of the mapping apply.  
Delivery formats are GeoTIFF, GeoPDF, GeoJPEG and vectors (shapefile and KML formats).

## Framework

The products elaborated in the framework of current mapping in rush mode activation are realized to the best of our ability, within a very short time frame during a crisis, optimising the available data and information. All geographic information has limitations due to scale, resolution, date and interpretation of the original data sources. The products are compliant with GIO-EMS RUSH Product Portfolio specifications.

## Map Production

The present map shows basic topographic features such as transportation, hydrology and settlements in the area of Vlasenica (BOSNIA AND HERZEGOVINA). These basic topographic features are analyzed and the resulting vectorized map is made available to the public via the web portal from RapidEye® BlackBridge (acquired on 22/10/2013 10:46 UTC, GSD 6 m, approx. 5% cloud coverage) and Landsat® 5 U.S. Geological Survey on 12/03/2014, GSD 15m, approx. 0% cloud coverage).

Only the geometric accuracy of this product is 5 m or better, from native positional accuracy of the background satellite image of the aerial orthoregions.

Shaded areas are zones of lower interpretation accuracy due to the poorer image radiometry.

Only the area enclosed by the Area of Interest (AOI) is analyzed.

Map produced on 19/05/2014 by e-GEOS under contract 257219 with the European Commission. All products are © of the European Commission.

Name of the release inspector (quality control): e-GEOS (ODO).

E-mail: rush@ems-gmes.eu

