

ORASJE - BOSNIA AND HERZEGOVINA

Flood - 13/05/2014

Delineation Map - Detail 01 - Monit 01

Production date: 25/05/2014

Cartographic Information

1:15000

Full color ISO A1, medium resolution (200 dpi)

0 0,25 0,5 1 km

Map Coordinate System: WGS 1984 UTM Zone 34N
Graticule: WGS 84 geographical coordinates

Legend

Crisis Information

- Flooded Area (25.05.2014 09:03 UTC)
- Old Flooded Area (21.05.2014 09:03 UTC)

General Information

- Area of Interest

Administrative boundaries

- International Boundary
- Region
- Municipality
- Settlements
 - Populated Place
 - Residential
 - Agricultural
 - Cemetery
 - Commercial
 - Industrial
 - Recreational
 - Religious
 - Transportation

Point of Interest

- Medical
- Religious

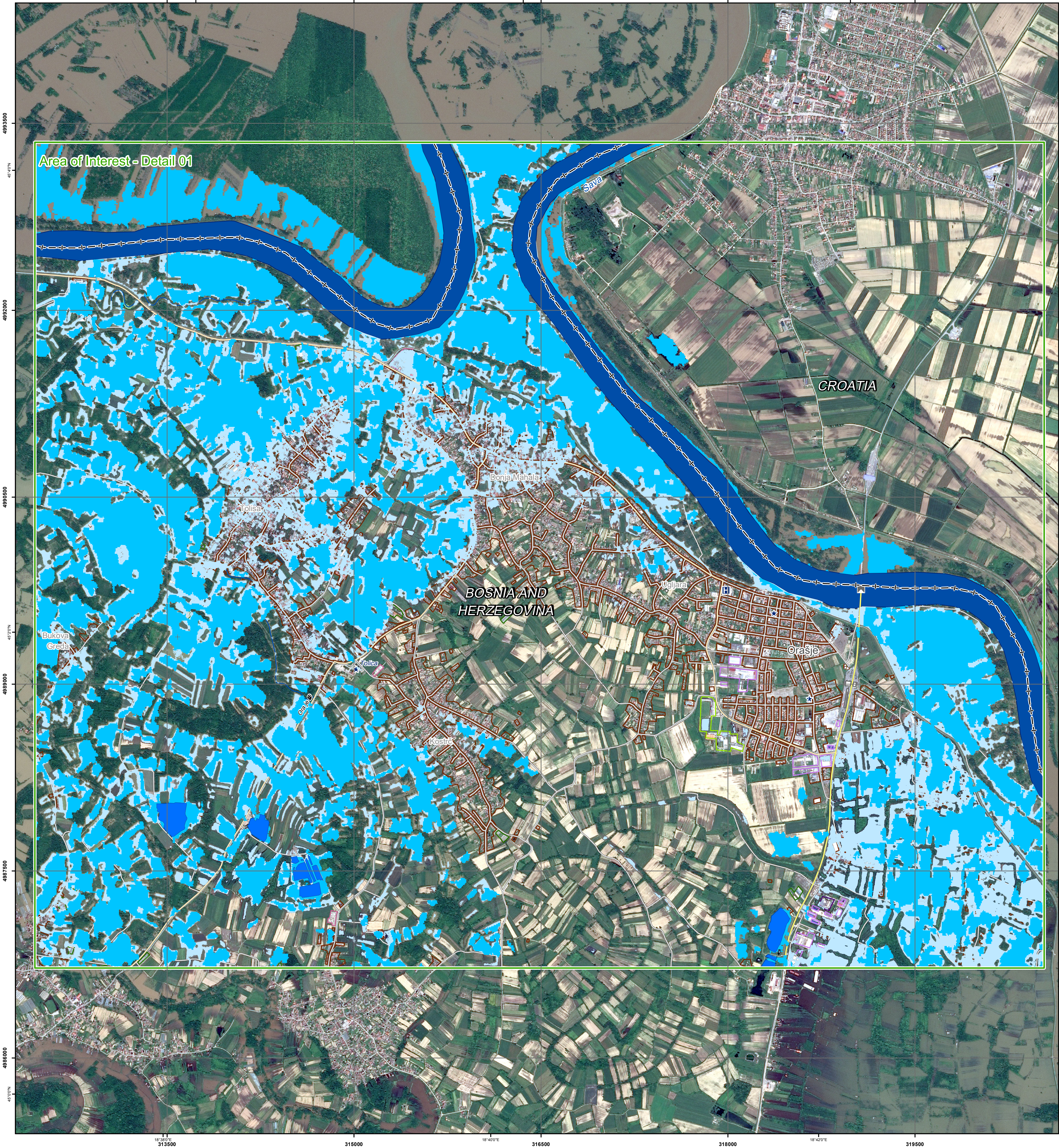
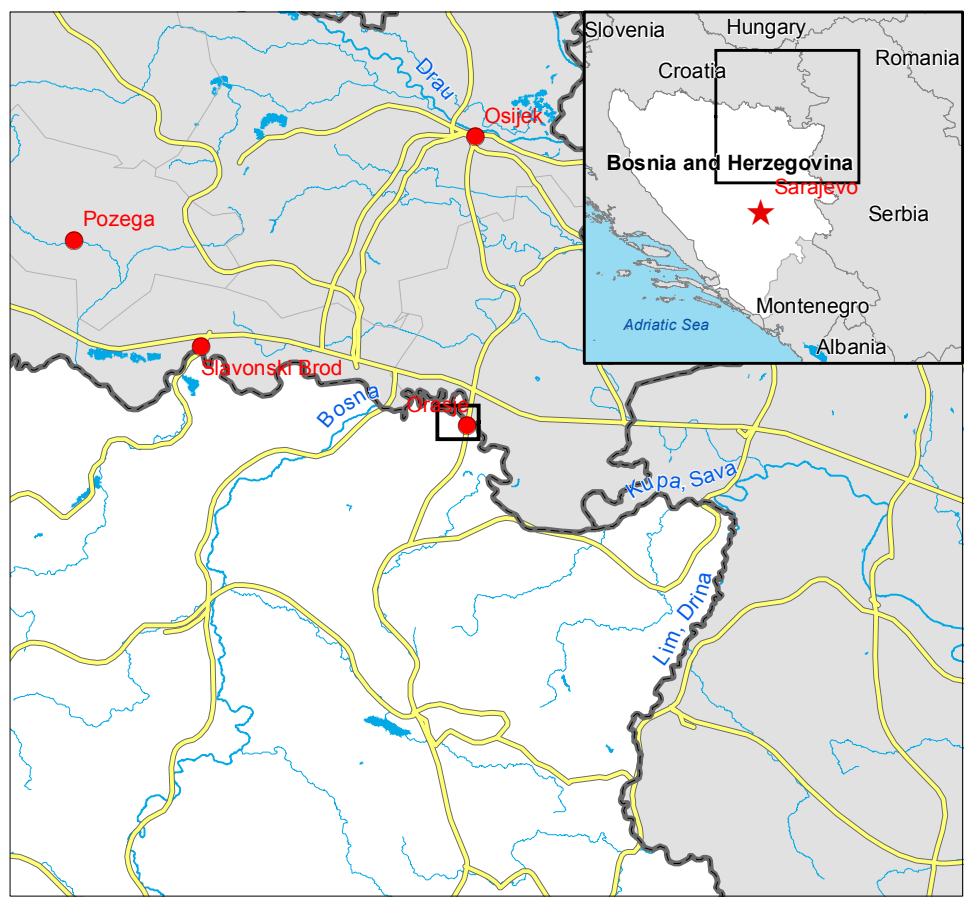
Hydrology

- River
- Canal
- Lake
- River

Transportation

- Bridge
- Primary Road
- Secondary Road
- Local Road

Consequences within the detailed AOI on Bosnian Territory on 25/05/2014					
			Affected	Total in AOI	
Flooded area		ha		987	
Estimated population		Inhabitants	450	15500	
Settlements	Commercial	ha	0,1	10,5	
	Residential	ha	13,1	452,9	
	Religious	ha	0	1,2	
	Agricultural	ha	0,8	3,5	
Transportation	Primary Road	km	0,2	3,1	
	Secondary Road	km	1	14,2	
	Local Road	km	15	106,9	
	Bridge	No.	1	15	



Map Information
On 13 May 2014, heavy rainfalls and widespread flooding hit large parts of Bosnia and Herzegovina. Heavy rainfall continued to affect large parts, in particular the region of Doboj and Zenica. The core users of the maps are Disaster Response Authorities involved in operations.

Data Sources

Inset maps based on: Administrative boundaries (JRG 2013, GISCO 2010, © EuroGeographics), Hydrology, Transportation (Natural Earth, 2012, CC-BY, CC-BY-NC 4.0), Settlements (Geonames, 2013), SPOT6 © Airbus Defence and Space 2014 (acquired on 21/05/2014 09:03 UTC, GSD 1.5 m, approx. 0% cloud coverage).
RadarSat-2 © MDA (acquired on 25/05/2014 05:03 UTC, GSD 5 m) Ltd. All rights reserved.
Base vector layers based on OpenStreetMap © OpenStreetMap contributors, Wikimapia.org, GeoNames (approx. 1:10,000, extracted on 20/05/2014), refined by GAF AG. Source information is included in vector data. Elevation data: SRTM (90 m posting), Height in meters above mean sea level. Population data: LandScan 2010 © UT BATTELLE, LLC.
All Data sources are complete and with no gaps.

Dissemination/Publication

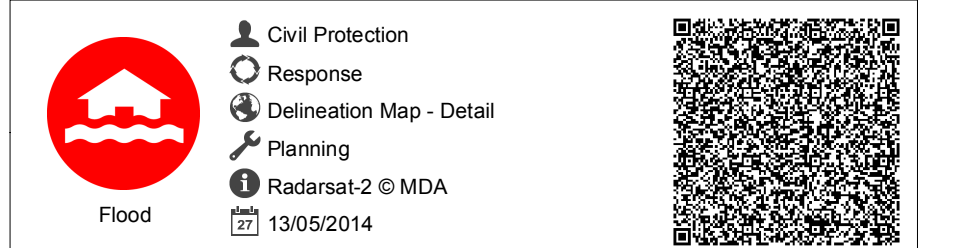
No restrictions on the publication of the mapping apply.
Delivery formats are GeoTIFF, GeoPDF, GeoPEG and vectors (shapefile and KML formats).

Framework

The products elaborated in the framework of current mapping in rush mode activation are realized to the best of our ability, within a very short time frame during a crisis, optimising the available data and information. All geographic information has limitations due to scale, resolution, date and interpretation of the original data sources. The products are compliant with GIO-EMS RUSH Product Portfolio specifications.

Map Production

The present map shows basic topographic features such as transportation, hydrology and settlements in the area of Orasje (BOSNIA AND HERZEGOVINA). These basic topographic features are derived from public datasets, refined by means of visual interpretation of pre-event orthoimagery from RapidEye © Blackbridge (acquired on 21/03/2014 10:49 UTC, GSD 6.5 m, 0% cloud coverage). Thematic layers, assessing the delineation of the event, have been derived from post-event image SPOT6 © Astrium (acquired on 21/05/2014 09:03 UTC, GSD 1.5 m) Ltd. and RadarSat-2 © MDA (acquired on 25/05/2014 05:04 UTC, GSD 5 m) Ltd. All rights reserved.
All satellite images have been radiometrically enhanced and orthorectified with RPC approach (using SRTM elevation data).
The estimated geometric accuracy of this product is 35 m CE90 or better, from native positional accuracy of the background satellite image.
The estimated thematic accuracy of this product is 85% or better, as it is based on visual interpretation of recognizable items on high resolution optical imagery. Shadowed areas are zones of lower interpretation accuracy due to the poorer image radiometry.
Only the area enclosed by the Area of Interest within the Bosnian territory has been analyzed within the Bosnian territory.
Map produced on 25/05/2014 by GAF AG under contract 257219 with the European Commission. All products are © of the European Commission.
Name of the release inspector (quality control): GAF AG (ODO).
E-mail: rush@ems-gmes.eu
Map products available at <http://emergency.copernicus.eu/mapping/list-of-components/EMSR087>



Copernicus
The European Earth Observation Programme

