

ORASJE - BOSNIA AND HERZEGOVINA

Flood - 13/05/2014

Delineation Map - Detail 01

Production date: 24/05/2014

Cartographic Information

1:15000

Full color ISO A1, medium resolution (200 dpi)

0 0.25 0.5 1 km

Map Coordinate System: WGS 1984 UTM Zone 34N
Graticule: WGS 84 geographical coordinates



Legend

Crisis Information

Flooded Area in Bosnia (21.05.2014 9:03 UTC)

General Information

Area of Interest

Administrative boundaries

International Boundary

Municipality

Settlements

Populated Place

Residential

Agricultural

Cemetery

Commercial

Industrial

Recreational

Religious

Transportation

Point of Interest

Medical

Religious

Hydrology

River

Canal

Lake

River

Transportation

Bridge

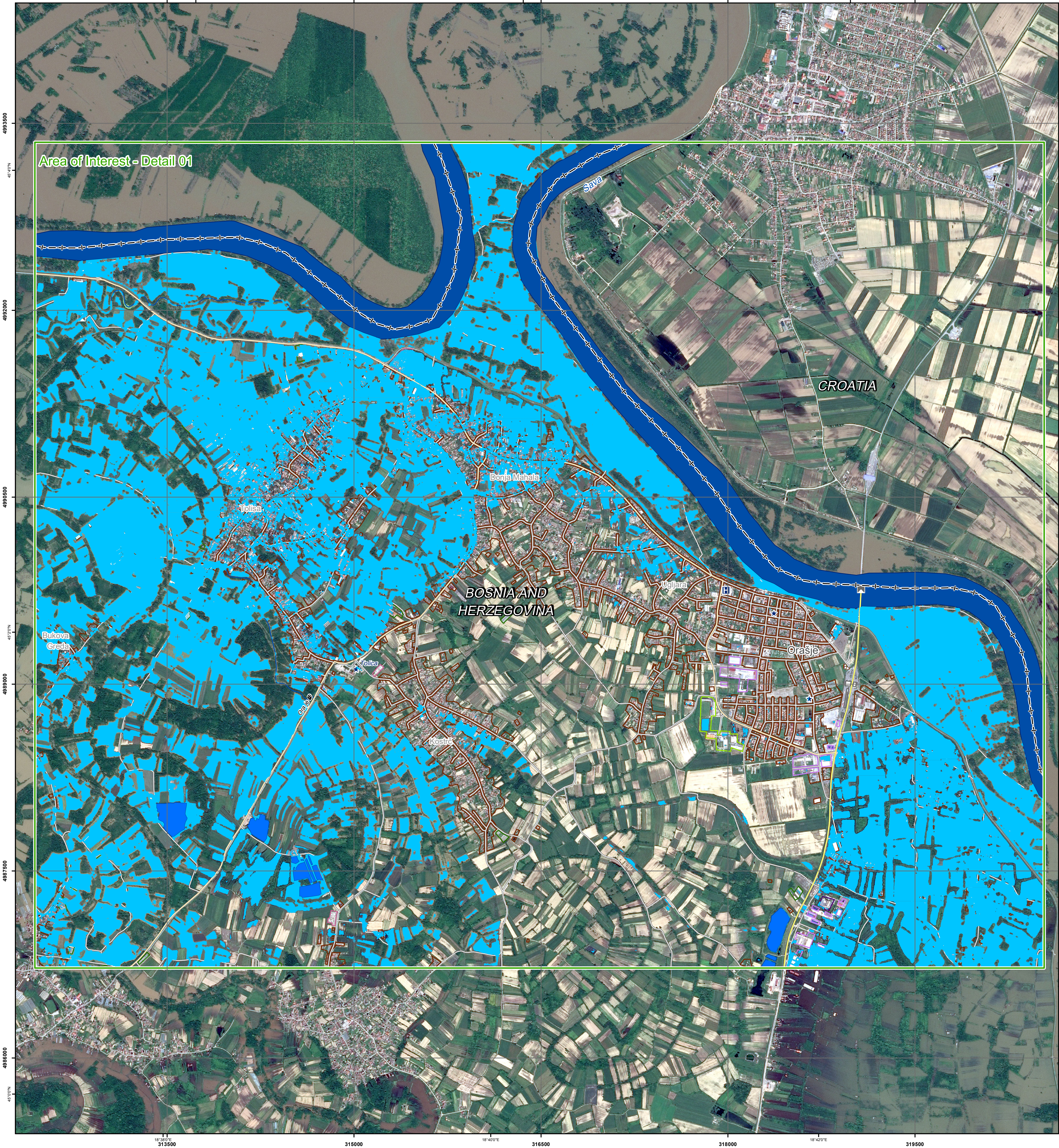
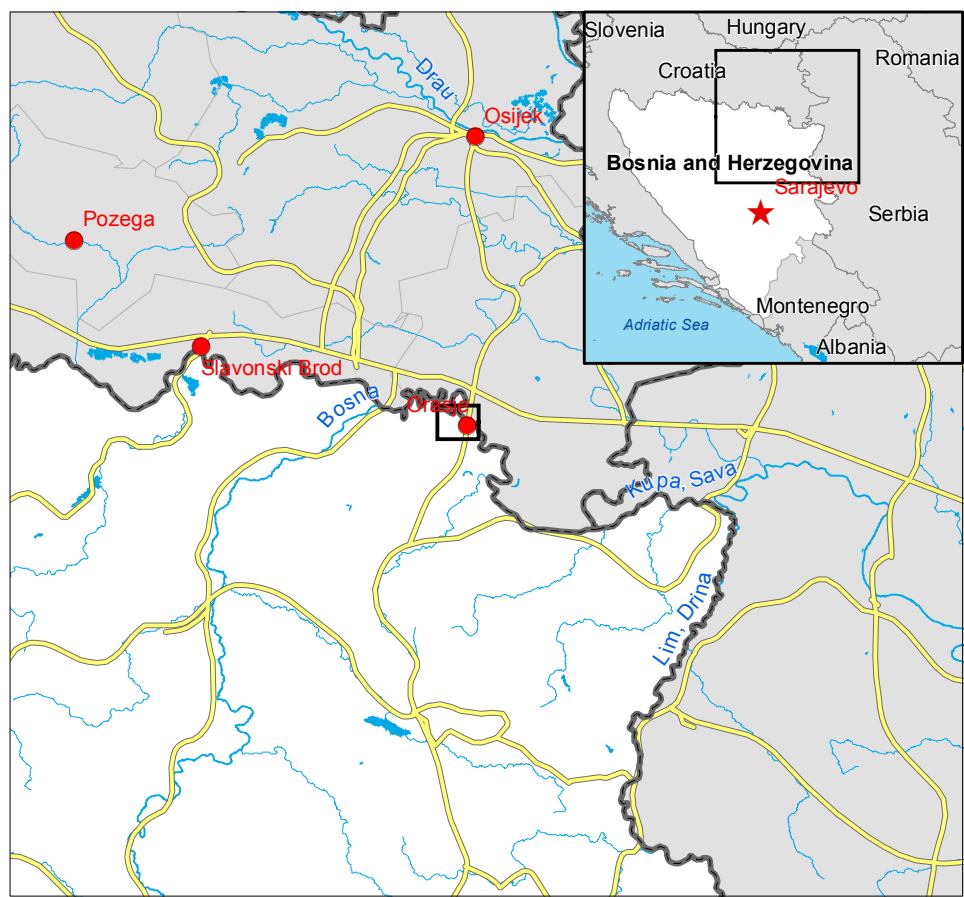
Primary Road

Secondary Road

Local Road

Consequences within the detailed AOI on Bosnian Territory on 21/05/2014

		Affected	Total in AOI
Flooded area	ha	1410,3	
Estimated population	Inhabitants	3420	15500
Settlements	Industrial	ha	0,0
	Commercial	ha	0,7
	Residential	ha	99,9
	Religious	ha	0,1
	Recreational	ha	0,6
	Cemetery	ha	2,3
Transportation	Agricultural	ha	2,4
	Primary Road	km	0
	Secondary Road	km	1,8
	Local Road	km	34
	Bridge	No.	2



Map Information

On 13 May 2014, heavy rainfalls and widespread flooding hit large parts of Bosnia and Herzegovina. Heavy rainfall continued to affect large parts, in particular the region of Doboj and Zenica. The core users of the maps are Disaster Response Authorities involved in operations.

Data Sources

Inset maps based on: Administrative boundaries (JRC 2013, GISCO 2010, © EuroGeographics), Hydrology, Transportation (Natural Earth, 2012, CCM River DB © EU-JRC 2007), Settlements (Geonames, 2013), SPOT6 © Airbus Defence and Space 2014 (acquired on 21/05/2014 09:03 UTC, GSD 1,5 m, approx. 0% cloud coverage). Base vector layers based on OpenStreetMap © OpenStreetMap contributors, Wikimapia.org, GeoNames (approx. 1:10.000, extracted on 20/05/2014), refined by GAF AG. Source information is included in vector data. Elevation data: SRTM (90 m posting). Height in meters above mean sea level. Population data: Landscan 2010 © UT BATTELLE, LLC. All Data sources are complete and with no gaps.

Dissemination/Publication

No restrictions on the publication of the mapping apply.
Delivery formats are GeoTIFF, GeoPDF, GeoPEG and vectors (shapefile and KML formats).

Framework

The products elaborated in the framework of current mapping in rush mode activation are realized to the best of our ability, within a very short time frame during a crisis, optimising the available data and information. All geographic information has limitations due to scale, resolution, date and interpretation of the original data sources. The products are compliant with GIO-EMS RUSH Product Portfolio specifications.

Map Production

The present map shows basic topographic features such as transportation, hydrology and settlements in the area of Orasje (BOSNIA AND HERZEGOVINA). These basic topographic features are derived from public datasets, refined by means of visual interpretation of pre-event orthoimagery from RapidEye © Blackbridge (acquired on 21/03/2014 10:49 UTC, GSD 6,5 m, 0% cloud coverage). Thematic layers, assessing the delineation of the event, have been derived from post-event image SPOT6 © Astrium (acquired on 21/05/2014 09:03 UTC, GSD 1,5 m) Ltd. All rights reserved. All satellite images have been radiometrically enhanced and orthorectified with RPC approach (using SRTM elevation data). The estimated geometric accuracy of this product is 35 m CE90 or better, from native positional accuracy of the background satellite image. The estimated thematic accuracy of this product is 85% or better, as it is based on visual interpretation of recognizable items on high resolution optical imagery. Shadowed areas are zones of lower interpretation accuracy due to the poorer image radiometry. Only the area enclosed by the Area of Interest within the Bosnian territory has been analyzed within the Bosnian territory. Map produced on 24/05/2014 by GAF AG under contract 257219 with the European Commission. All products are © of the European Commission. Name of the release inspector (quality control): GAF AG (ODO). <http://emergency.copernicus.eu/mapping/list-of-components/EMSR087>

