

ORASJE - BOSNIA AND HERZEGOVINA

Flood - 13/05/2014

Delineation Map - Detail 02

Production date: 25/05/2014

Cartographic Information

1:15000

Full color ISO A1, medium resolution (200 dpi)

0 0,25 0,5 1 km

Map Coordinate System: WGS 1984 UTM Zone 34N
Graticule: WGS 84 geographical coordinates



Legend

General Information

Flooded Area
(25/05/2014 05:04 UTC)

General Information

Area of Interest

Administrative boundaries

International Boundary

Region

Municipality

Point of Interest

Religious

Settlements

Populated Place

Residential

Hydrology

Canal

Lake

Reservoir

River

Transportation

Bridge

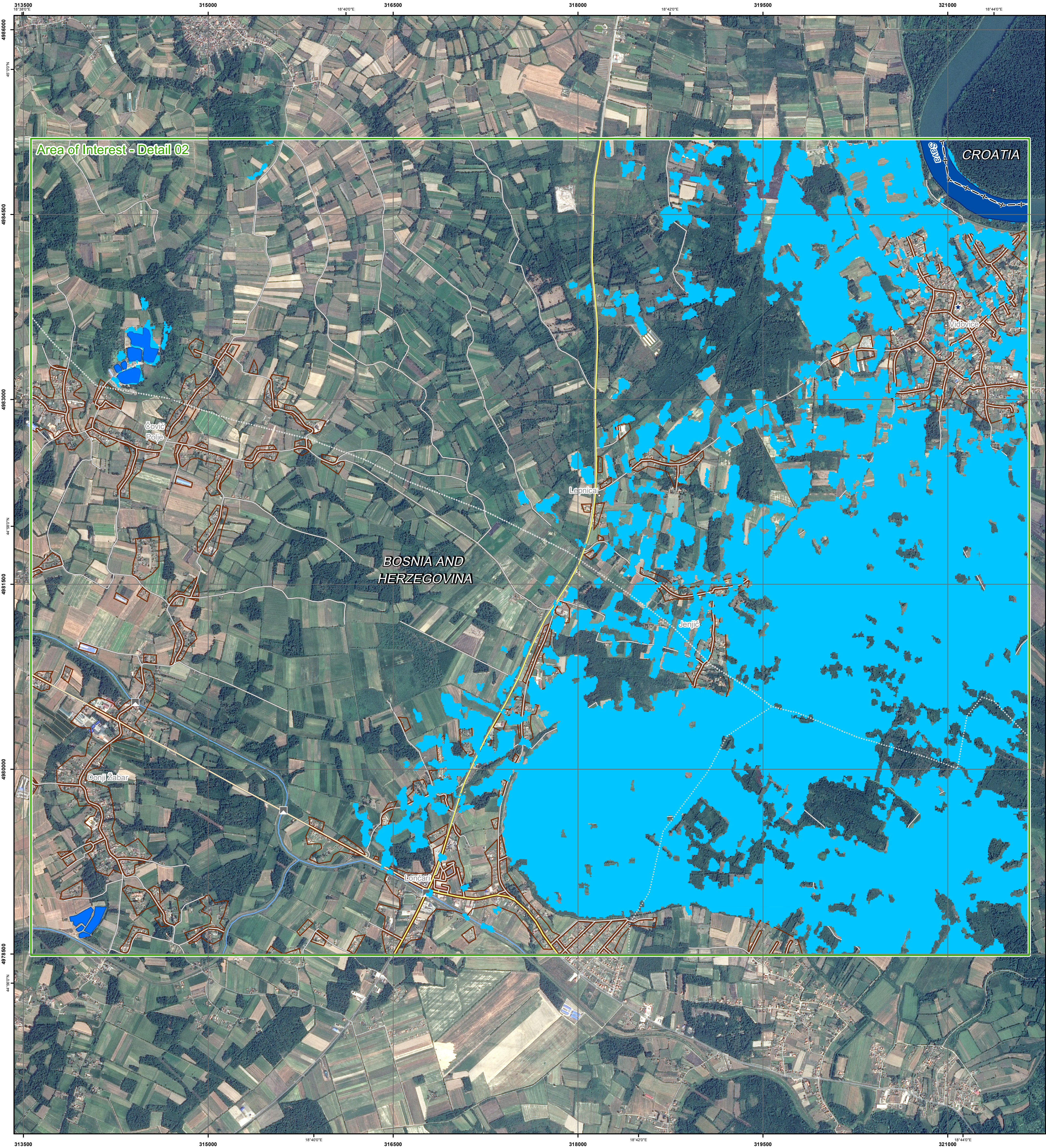
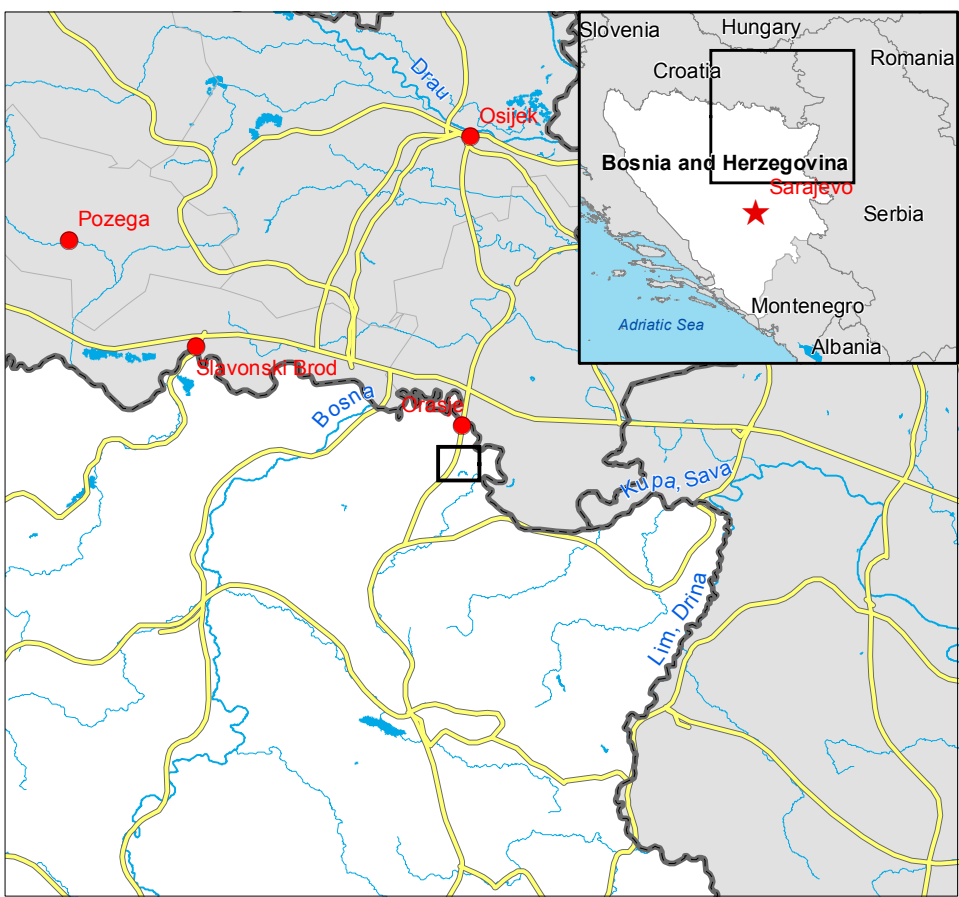
Primary Road

Secondary Road

Local Road

Consequences within the detailed AOI on Bosnian territory on 25/05/2014

Flooded area		ha	Affected	
			1150	Total in AOI
Estimated population		Inhabitants	1045	12375
Settlements	Residential	ha	32,3	382,2
	Secondary Road	km	0,3	3,6
Transportation	Local Road	km	12,8	86,7
	Bridge	No.	0	3



Map Information
Inset maps based on: Administrative boundaries (JRC 2013, GISCO 2010, © EuroGeographics), Hydrology, Transportation (Natural Earth, 2012, CCM River DB © EU-JRC 2007), Settlements (Geonames, 2013).
SPOT16 © Airbus Defence and Space 2014 (acquired on 18/08/2013 10:24 UTC, GSD 1.5 m, approx. 0% cloud coverage).
Radarsat-2 © MDA (acquired on 25/05/2014 05:04 UTC, GSD 5 m) Ltd. All rights reserved.
Base vector layers based on OpenStreetMap © OpenStreetMap contributors, Wikimapia.org, GeoNames (approx. 1:10,000, extracted on 20/05/2014), refined by GAF AG.
Source information is included in vector data.
Elevation data: SRTM (90 m posting). Height in meters above mean sea level.
Population data: Landsat 2010 © UT BATTELLE, LLC. <CLR>
All Data sources are complete and with no gaps.

Dissemination/Publication
No restrictions on the publication of the mapping apply.
Delivery formats are GeoTIFF, GeoPDF, GeoPEG and vectors (shapefile and KML formats).

Framework
The products elaborated in the framework of current mapping in rush mode activation are realized to the best of our ability, within a very short time frame during a crisis, optimising the available data and information. All geographic information has limitations due to scale, resolution, date and interpretation of the original data sources. The products are compliant with GIO-EMS RUSH Product Portfolio specifications.

Map Production
The present map shows basic topographic features such as transportation, hydrology and settlements in the area of Orasje (BOSNIA AND HERZEGOVINA). These basic topographic features are derived from public datasets, refined by means of visual interpretation of pre-event orthoimagery from SPOT16 © Airbus Defence and Space 2014 (acquired on 18/08/2013 10:24 UTC, GSD 1.5 m, approx. 0% cloud coverage) Ltd. All rights reserved.
Thematic layers, assessing the delineation of the event, have been derived from post-event image Radarsat-2 © MDA (acquired on 25/05/2014 05:04 UTC, GSD 5 m) Ltd. All rights reserved.
All satellite images have been radiometrically enhanced and orthorectified with RPC approach (using SRTM elevation data).
The estimated geometric accuracy of this product is 35 m CE90 or better, from native positional accuracy of the background satellite image.
The estimated thematic accuracy of this product is 85% or better, as it is based on visual interpretation of recognizable items on high resolution optical imagery. Shadowed areas are zones of lower interpretation accuracy due to the poorer image radiometry.
Only the area enclosed by the Area of Interest within the Bosnian territory has been analyzed within the Bosnian territory.
Map produced on 25/05/2014 by GAF AG under contract 257219 with the European Commission. All products are © of the European Commission.
Name of the release inspector (quality control): GAF AG (ODO).
E-mail: rush@ems-gmes.eu
Map products available at <http://emergency.copernicus.eu/mapping/list-of-components/EMSR087>

