

ORASJE - BOSNIA AND HERZEGOVINA

Flood - 13/05/2014

Delineation Map - Overview

Production date: 24/05/2014

Cartographic Information

1:35000

Full color ISO A1, medium resolution (200 dpi)

0 0.5 1 2 km

Map Coordinate System: WGS 1984 UTM Zone 34N
Graticule: WGS 84 geographical coordinates

Legend

Crisis Information

Flooded Area in Bosnia (21.05.2014 10:49 UTC)

General Information

Area of interest

Administrative boundaries

International Boundary

Region

Municipality

Settlements

Populated Place

Residential

Agricultural

Cemetery

Commercial

Industrial

Recreational

Religious

Transportation

Point of Interest

Medical

Religious

Hydrology

River

Stream

Canal

Lake

Reservoir

River

Transportation

Bridge

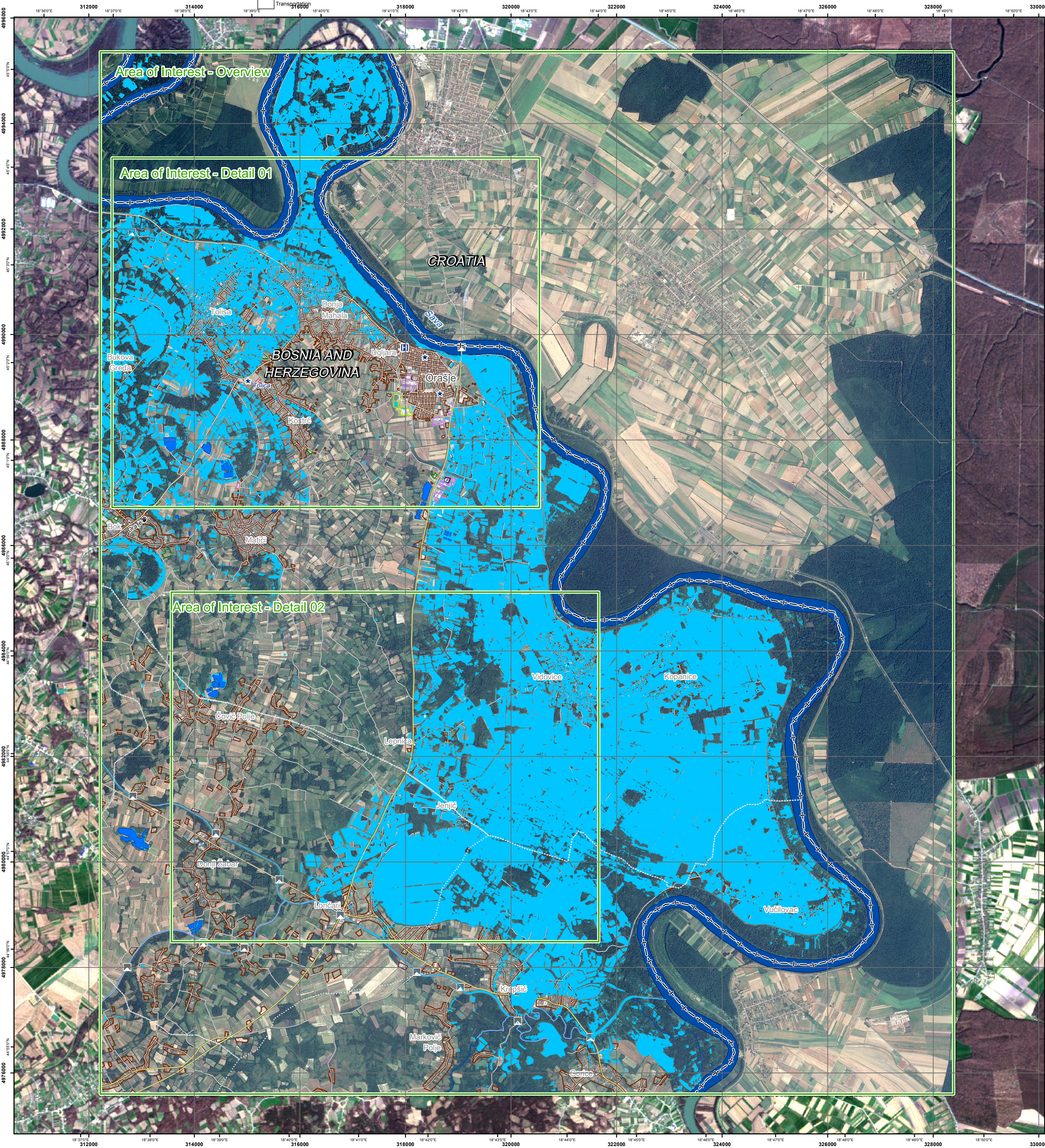
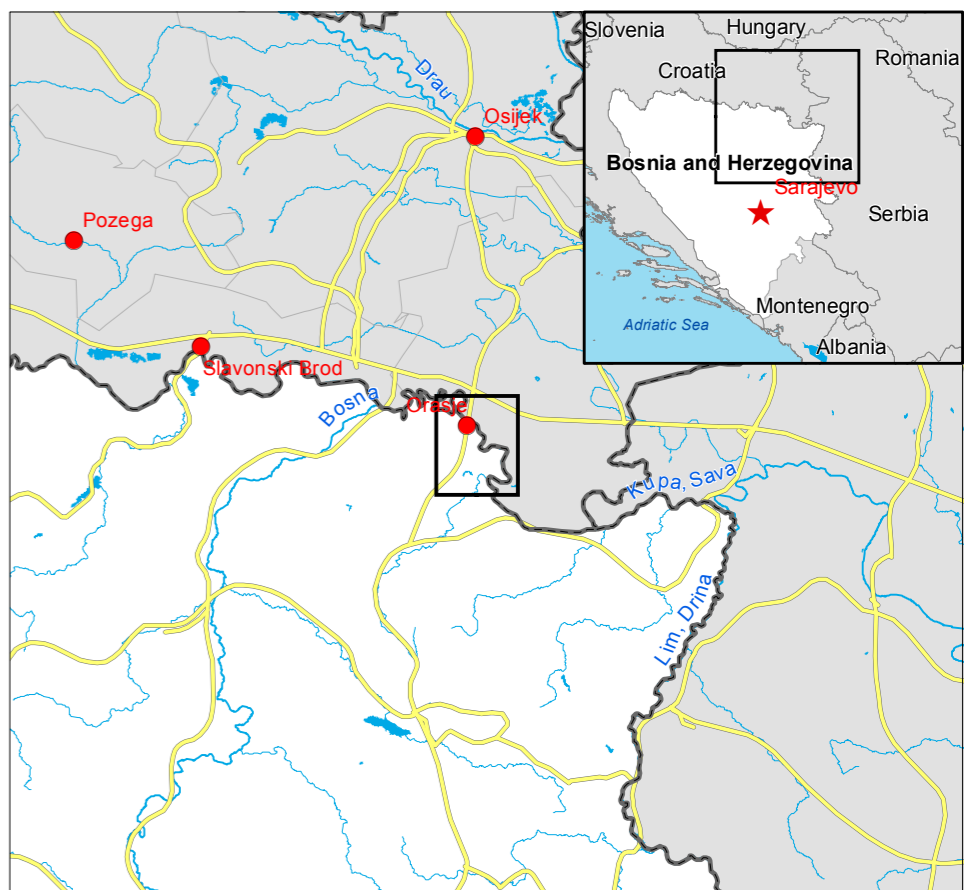
Primary Road

Secondary Road

Local Road

Consequences within the overview AOI on Bosnian Territory on 21/05/2014

		Affected		Total in AOI
Flooded area	ha	6053,7		
Estimated population	Inhabitants	20850	85000	
Settlements	Industrial	ha	0	0,8
	Commercial	ha	1	10,9
	Residential	ha	362,4	1475,7
	Religious	ha	0	1,2
	Recreational	ha	0,6	6,0
	Transportation	ha	0	0,5
	Cemetery	ha	0	3,5
	Agricultural	ha	2,9	13,2
Transportation	Primary Road	km	0,6	26,2
	Secondary Road	km	1,8	20,3
	Local Road	km	93	318,9
	Bridge	No.	2	3



Map Information

On 13 May 2014, heavy rainfalls and widespread flooding hit large parts of Bosnia and Herzegovina. Heavy rainfall continued to affect large parts, in particular the region of Doboj and Zenica. The core users of the maps are Disaster Response Authorities involved in operations.

Data Sources

Inset maps based on: Administrative boundaries (JRC 2013, GISCO 2010, © EuroGeographics), Hydrology, Transportation (Natural Earth, 2012, CCM River DB © EU-JRC 2007), Settlements (Geonames, 2013), SPOT6 © Airbus Defence and Space 2014 (acquired on 21/05/2014 09:03 UTC, GSD 1.5 m, approx. 0% cloud coverage). Base vector layers based on OpenStreetMap © OpenStreetMap contributors, Wikimapia.org, GeoNames (approx. 1:10 000, extracted on 20/05/2014), refined by GAF AG. Source information is included in vector data. Elevation data: SRTM (90 m posting). Height in meters above mean sea level. Population data: Landscan 2010 © UT BATTELLE, LLC. All data sources are complete and with no gaps.

Dissemination/Publication

No restrictions on the publication of the mapping apply. Delivery formats are GeoTIFF, GeoPDF, GeoPEG and vectors (shapefile and KML formats).

Framework

The products elaborated in the framework of current mapping in rush mode activation are realized to the best of our ability, within a very short time frame during a crisis, optimising the available data and information. All geographic information has limitations due to scale, resolution, date and interpretation of the original data sources. The products are compliant with GIO-EMS RUSH Product Portfolio specifications.

Map Production

The present map shows basic topographic features such as transportation, hydrology and settlements in the area of Orasje (BOSNIA AND HERZEGOVINA). These basic topographic features are derived from public datasets, refined by means of visual interpretation of pre-event orthomage from RapidEye © Blackbridge (acquired on 23/03/2014 10:49 UTC, GSD 6.5 m, 0% cloud coverage). Thematic layers, assessing the delineation of the event, have been derived from post-event image SPOT6 © Astrium (acquired on 21/05/2014 09:03 UTC, GSD 1.5 m) Ltd. All rights reserved. All satellite images have been radiometrically enhanced and orthorectified with RPC approach (using SRTM elevation data). The estimated geometric accuracy of this product is 35 m CE90 or better, from native positional accuracy of the background satellite image. The estimated thematic accuracy of this product is 85% or better, as it is based on visual interpretation of recognizable items on high resolution optical imagery. Shadowed areas are zones of lower interpretation accuracy due to the poorer image radiometry. Only the area enclosed by the Area of Interest within the Bosnian territory has been analyzed. Map produced on 24/05/2014 by GAF AG under contract 257219 with the European Commission. All products are © of the European Commission. Name of the release inspector (quality control): GAF AG (ODO). E-mail: rush@ems-gmes.eu Map products available at <http://emergency.copernicus.eu/mapping/list-of-components/EMSR087>

