

Legend**Crisis Information**
Flooded Area
(22/05/2014, 9:44 UTC)**General Information**
Area of Interest**Administrative boundaries**+ International Boundary
--- Province**Settlements**

o Populated Place

Residential

Agricultural

Cemetery

Industrial

Medical

Recreational

Religious

Hydrology

River

Canal

River

Lake

Reservoir

Point of Interest

Medical

Religious

Transportation

Railway

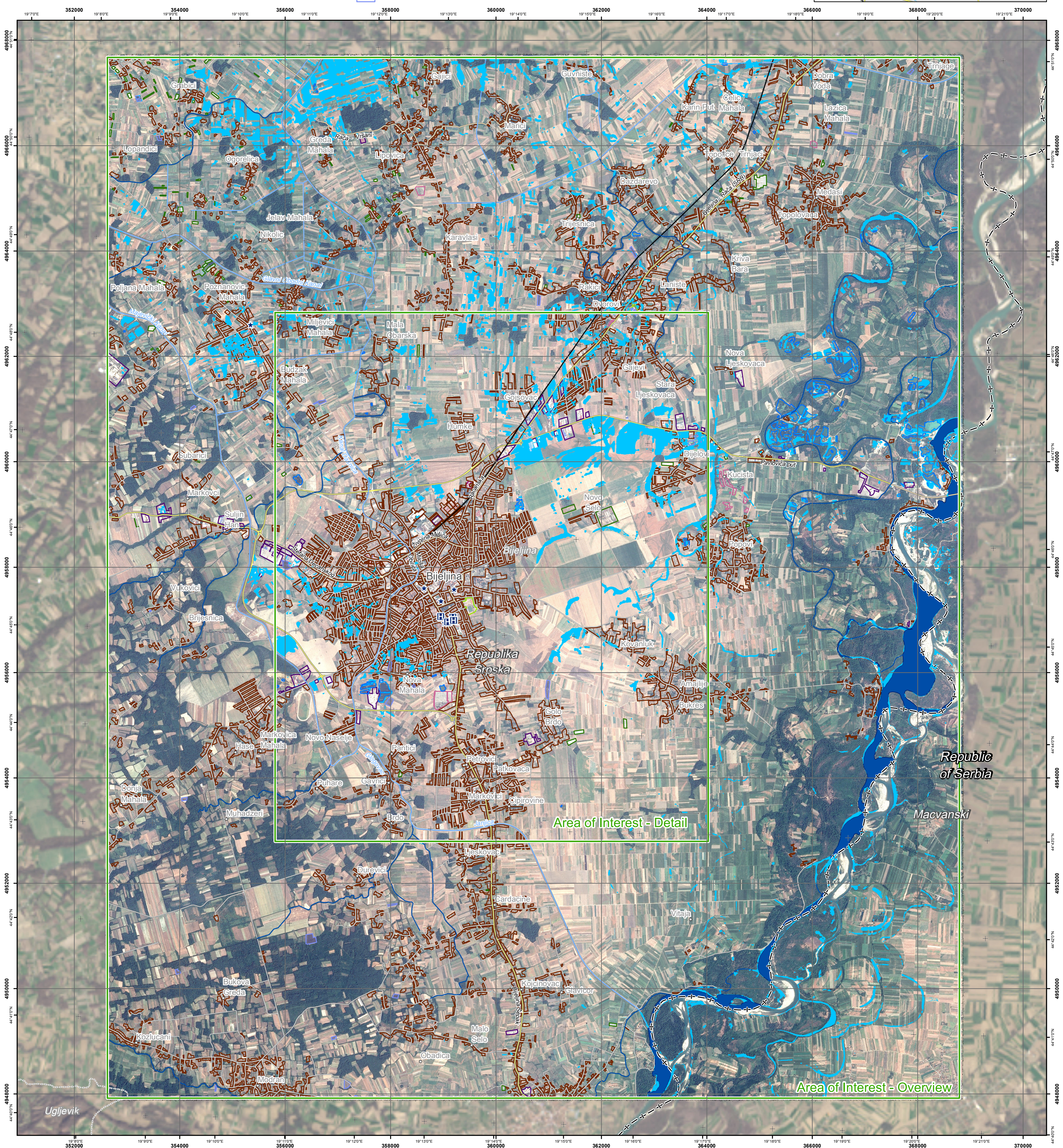
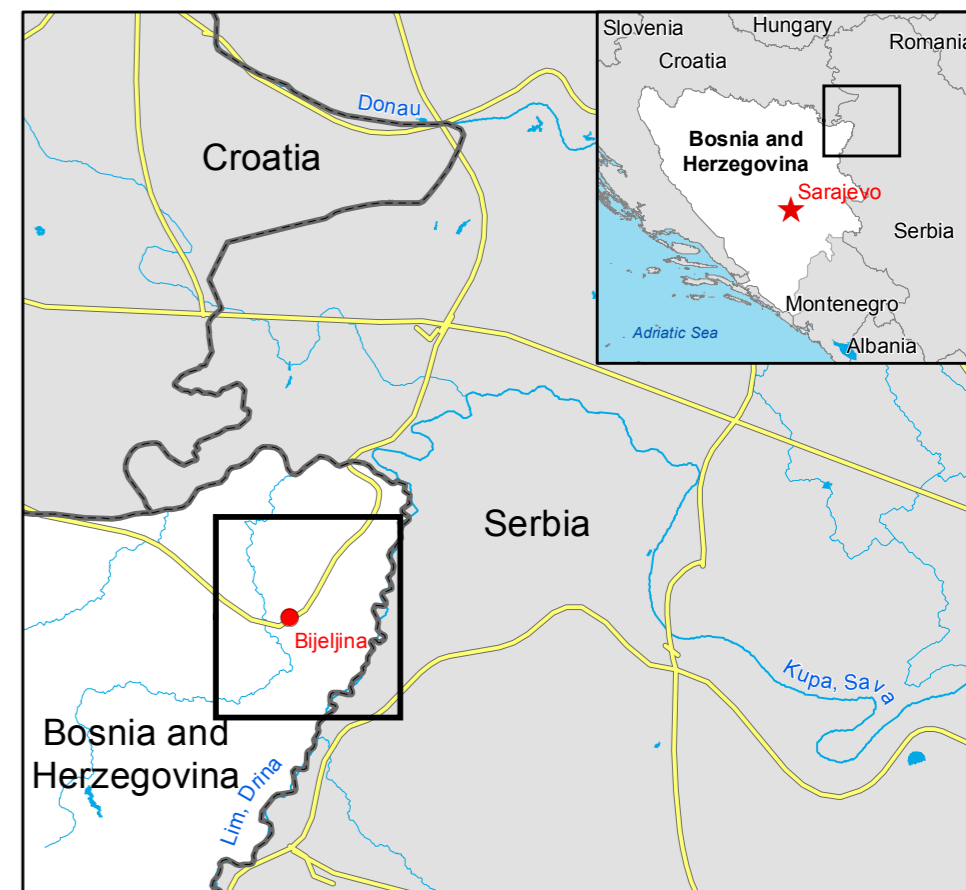
Primary Road

Secondary Road

Local Road

Consequences within the overview AOI on Bosnian Territory on 22/05/2014

		Affected	Total in AOI
Flooded area	ha	1105	
Estimated population	Inhabitants	2891	74099
Settlements			
Residential	ha	88.9	2916
Agricultural	ha	3.1	60.4
Cemetery	ha	0	13.5
Industrial	ha	8.4	135
Medical	ha	0	0.9
Recreational	ha	0.4	8
Religious	ha	0	0.5
Transportation			
Primary roads	km	0.8	43.5
Secondary roads	km	0.5	17.6
Local Roads	km	14.5	552
Railways	km	0	11.6

**Map Information**

On 13 May 2014, heavy rainfalls and widespread flooding hit large parts of Bosnia and Herzegovina. Heavy rainfall continued to affect large parts, in particular the region of Doboj and Zenica. The core users of the maps are Disaster Response Authorities involved in operations

Data Sources

Inset maps based on: Administrative boundaries (JRC 2013, GISCO 2010, ©EuroGeographics), Hydrology, Transportation (Natural Earth, 2012, CCM River DB © EUJRC 2007), Settlements (Geonames, 2013), SPOT6 © Airbus Defence and Space (acquired on 22/05/2014 09:44 UTC, GSD 3.5 m, 0% cloud coverage), all rights reserved. Pre-event SPOT6 © Airbus Defence and Space (acquired on 18/08/2013 09:24 UTC, GSD 3.5 m, 0% cloud coverage), all rights reserved. Landsat © U.S. Geological Survey (acquired on 12/03/2014, GSD 15 m, approx. 0% cloud coverage). Base vector layers based on OpenStreetMap © OpenStreetMap contributors, GeoNames (approx. 1:10,000, extracted on 21/05/2014), refined by ITHACA. Source information is included in vector data. Population data: LandScan 2010 © UT BATTELLE, LLC. Elevation data: EU-DEM (25 m posting). Height in meters above mean sea level. All Data sources are complete and with no gaps.

Dissemination/Publication

No restrictions on the publication of the mapping apply. Delivery formats are GeoTIF, GeoPDF, GeoPEG and vectors (shapefile and KML formats).

Framework

The products elaborated in the framework of current mapping in rush mode activation are realized to the best of our ability, within a very short time frame during a crisis, optimising the available data and information. All geographic information has limitations due to scale, resolution, date and interpretation of the original data sources. The products are compliant with GIO-EMS RUSH Product Portfolio specifications.

Map Production

The present map shows the flood delineation in the area of Bijeljina (BOSNIA AND HERZEGOVINA). The basic topographic features are derived from public datasets, refined by means of visual interpretation of pre-event orthorectified imagery from SPOT6 © Airbus Defence and Space (acquired on 18/08/2013 09:24 UTC, GSD 2.3 m, 0% cloud coverage). Thematic layers, assessing the delineation of the event have been derived from post-event image SPOT6 © Airbus Defence and Space (acquired on 22/05/2014 09:44 UTC, GSD 3.5 m, 0% cloud coverage). All satellite images have been radiometrically enhanced, orthorectified with RPC approach (using EU-DEM elevation data) and coregistered to the pre-event image. The estimated geometric accuracy of this product is 6.6 m CE90 or better, from native positional accuracy of the background satellite image. The estimated thematic accuracy of this product is 85% or better, as it is based on visual interpretation of recognizable items on high resolution optical imagery. Shadowed areas are zones of lower interpretation accuracy due to the poorer image radiometry. Only the area enclosed by the Area of Interest within the Bosnian territory has been analyzed. Map produced on 22/05/2014 by ITHACA under contract 257217 with the European Commission. All products are © of the European Commission. Name of the release inspector (quality control): e-GEOS (ODO). E-mail: rush@ems-gmes.eu

Map products available at <http://emergency.copernicus.eu/mapping/list-of-components/EMSR087>

