

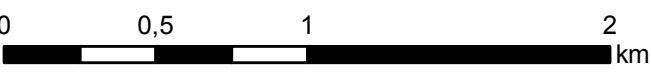
Baghabari - BANGLADESH
Flood - 10/08/2014
Reference Map - Detail

Production date: 23/08/2014

Cartographic Information

1:25000

Full color ISO A1, medium resolution (200 dpi)



Map Coordinate System: WGS 1984 UTM Zone 45N
Graticule: WGS 84 geographical coordinates



Legend

General Information

Area of Interest

Administrative boundaries

Region

Province

Settlements

Populated Place

Residential

Transportation

Local Road

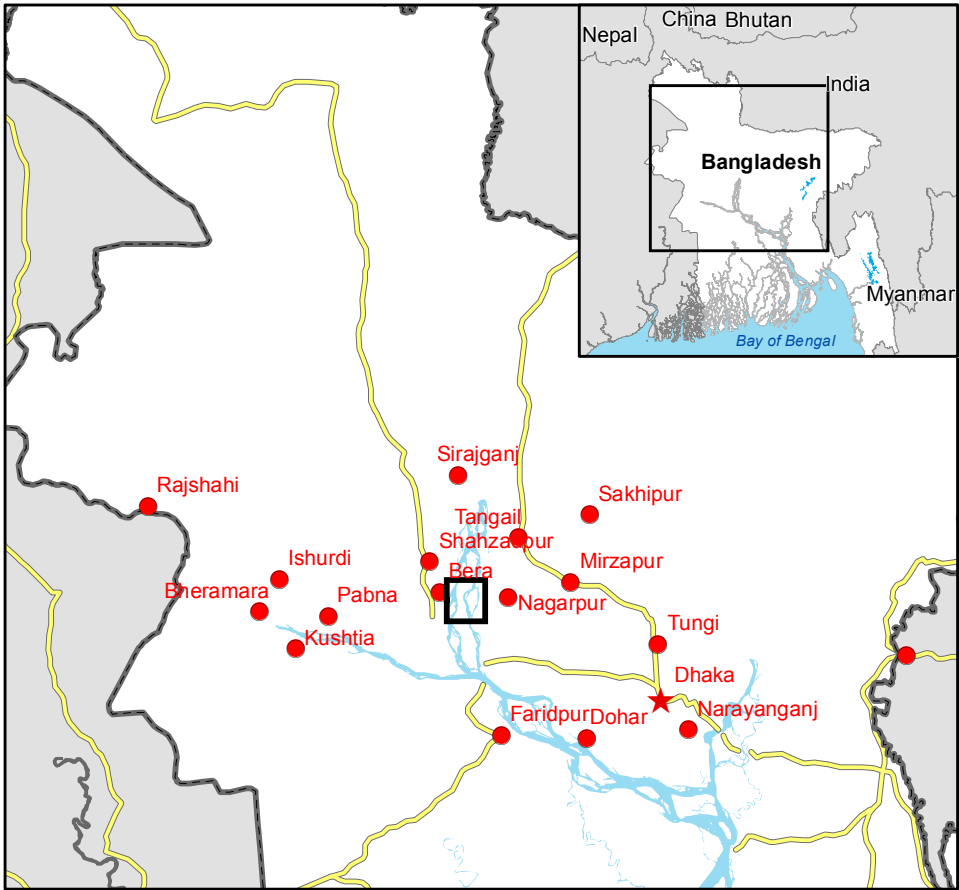
Hydrology

River

River

Exposure within the detail AOI

Estimated population		inhabitants	50128
Settlements	Residential	ha	1151
Transportation	Local roads	km	10



Map Information

Starting from 10 August 2014 the northern part of Bangladesh and upstream Indian states of Assam, Meghalaya, West Bengal and Sikkim have been experiencing heavy to very heavy rainfall, causing rising water levels of the major rivers. As a result, some low-lying areas in the Northwest along the Brahmaputra river have been inundated. The map shows the current extent of flooding and shall help to assess its potential impact on the population

Data Sources

Inset maps based on: Administrative boundaries (JRC 2013), Hydrology, Transportation (Natural Earth, 2012), Settlements (Geonames, 2013).
Landsat-8 © U.S. Geological Survey (acquired on 22/04/2014 10:52, GSD 30 m, 0% cloud coverage)
Base vector layers based on OpenStreetMap © OpenStreetMap contributors, Wikimapia.org, GeoNames (approx. 1:10,000, extracted on 22/08/2014), refined by SIRS. Source information is included in vector data.
Elevation data: SRTM (90m posting). Height in meters above mean sea level.
Population data: LandScan 2010 © UT BATTELLE, LLC.
All Data sources are complete and with no gaps.

Dissemination/Publication

Delivery formats are GeoTIFF, GeoPDF, GeoJPEG and vectors (shapefile and KML formats).

Framework

The products elaborated in the framework of current mapping in rush mode activation are realized to the best of our ability, within a very short time frame during a crisis, optimising the available data and information. All geographic information has limitations due to scale, resolution, date and interpretation of the original data sources. The products are compliant with GIO-EMS RUSH Product Portfolio specifications.

Map Production

The present map shows basic topographic features such as transportation, hydrology and settlements in the area of Chilmari (Bangladesh). These basic topographic features are derived from public datasets, refined by means of visual interpretation of pre-event image (Landsat-8). All satellite images have been radiometrically enhanced and orthorectified with SRTM elevation data. The estimated geometric accuracy of this product is 60m CE90 or better, from native positional accuracy of the background satellite image.
The estimated thematic accuracy of this product is 85% or better, as it is based on visual interpretation of recognizable items on medium resolution optical imagery. Shadowed areas are zones of lower interpretation accuracy due to the poorer image radiometry.
Only the area enclosed by the Area of Interest has been analyzed.
Map produced on 23/08/2014 by SIRS under contract 257219 with the European Commission. All products are © of the European Commission.
Name of the release inspector (quality control): e-GEOS (ODO).
E-mail: rush@ems-gmes.eu

