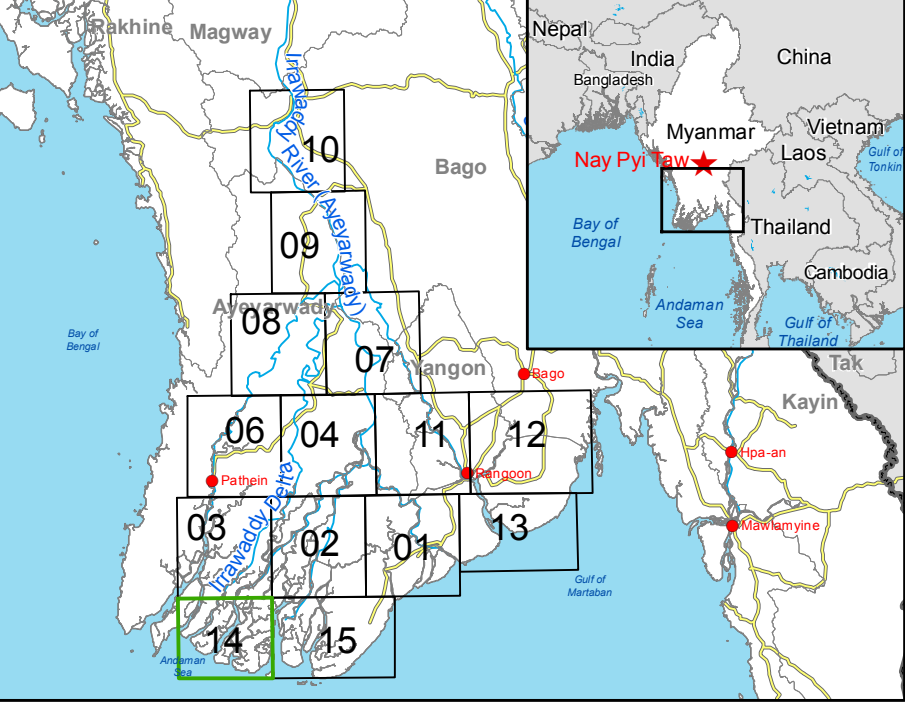


GLIDE number: N/A  
Activation ID: EMSR130  
Product N.: 14PYINSALU, v1, English

## Pyinsalu - MYANMAR Flood - 01/08/2015 Delineation Map



### Cartographic Information

1:90000 Full color ISO A1, medium resolution (200 dpi)  
0 2 4 8 km  
Grid: WGS 1984 UTM Zone 46N map coordinate system  
Tick marks: WGS 84 geographical coordinate system

**Legend**

**Crisis Information**  
Flooded Area (04/09/2015 11:46 UTC)

**General Information**  
Area of Interest  
Sensor Footprint  
Missing data

**Settlements**  
Populated Place  
Built-Up Area

**Hydrology**  
River  
River

**Transportation**  
Local Road

Consequences within the AOI on 04/09/2015				Affected	Total in
Flooded area			ha	9	5611
Estimated population		Inhabitants	9	137392	
Settlements		Built-up area	ha	1	14875
Transportation		Local road	km	11.5	345

### Map Information

Unusual heavy monsoon rains have been affecting Myanmar since 16 July causing river overflows and floods. In the past few days, torrential rains damaged farmland, roads, rail tracks, bridges and houses. Reservoir are seasonal inundated areas and water bodies probably due to agricultural practices (paddy fields).  
The core user of the map is Emergency Response Coordination Centre (ERCC).

Relevant date and time records (UTC)			
Event	01/08/2015 00:00	Last crisis status	04/09/2015 11:46
Activation	07/08/2015 10:00	Map production	05/09/2015

**Data Sources**  
Sentinel-1 A (acquired on 04/09/2015 11:46 UTC, GSD 20 m) provided by the European Space Agency.  
Landsat-8 © U.S. Geological Survey (acquired on 05/03/2015, GSD 15 m, respectively approx. 0% cloud coverage)  
Base vector layers based on OpenStreetMap © OpenStreetMap contributors, Wikimapia.org, GeoNames (approx. 1:10000, extracted on 01/01/2001), refined by GAF. Source information is included in vector data.  
Elevation data: SRTM (90 m posting). Height in meters above mean sea level.  
Population data: Landscan 2010 © UT BATTELLE, LLC.  
All Data sources are complete and with no gaps.  
Inset maps based on: Administrative boundaries (JRC 2013), Hydrology, Transportation (Natural Earth, 2012), Settlements (Geonames, 2013).

### Dissemination/Publication

Delivery formats are GeoTIFF, GeoPDF, GeoJPEG and vectors (shapefile and KML formats).  
Map products available in the Copernicus EMS Portal at the following URL:  
<http://emergency.copernicus.eu/mapping/list-of-components/EMSR130>  
All products are © of the European Union.

### Disclaimer

The products elaborated in the framework of current mapping in rush mode activation are realized to the best of our ability, within a very short time frame during a crisis, optimising the available data and information. All geographic information has limitations due to scale, resolution, date and interpretation of the original data sources. The products are compliant with Copernicus EMS Rapid Mapping Product Portfolio specifications.

### Map Production

The present map shows the flood delineation in the area of Pyinsalu (MYANMAR). The basic topographic features are derived from public datasets, refined by means of visual interpretation of pre-event image Landsat-8.  
Thematic layers, assessing the delineation of the event have been derived from post-event image Sentinel-1A.  
All satellite images have been radiometrically enhanced, orthorectified with RPC approach (using SRTM elevation data).  
The estimated geometric accuracy of this product is 40 m CE90 or better, from native positional accuracy of the background satellite image.  
The estimated thematic accuracy of this product is 85 % or better, based on previous experience in using high-resolution SAR for flood extent delineation. Please be aware that the thematic accuracy might be lower in urban and forested areas due to known limitations of the analysis technique.  
Only the area enclosed by the Area of Interest has been analyzed.

### Contact

Map produced by GAF AG under contract 259736 with the European Union.  
Name of the release inspector (quality control): e-GEOS (ODO).  
E-mail: [rapidmapping@ems-copernicus.eu](mailto:rapidmapping@ems-copernicus.eu)

