

Satkania - BANGLADESH

Tropical Cyclone - Situation as of 24/05/2016

Delineation Map

Cartographic Information

1:100000

Full color ISO A1, medium resolution (200 dpi)

0 2 4 8 km

Grid: WGS 1984 UTM Zone 46N map coordinate system
Tick marks: WGS 84 geographical coordinate system

Legend

Crisis Information

Flooded Area
(24/05/2016 11:24 UTC)

General Information

Area of Interest

Settlements

Populated Place

Built-Up Area

Hydrology

Coastline

Dam

River

Stream

Lake

Reservoir

River

Transportation

Bridge

Primary Road

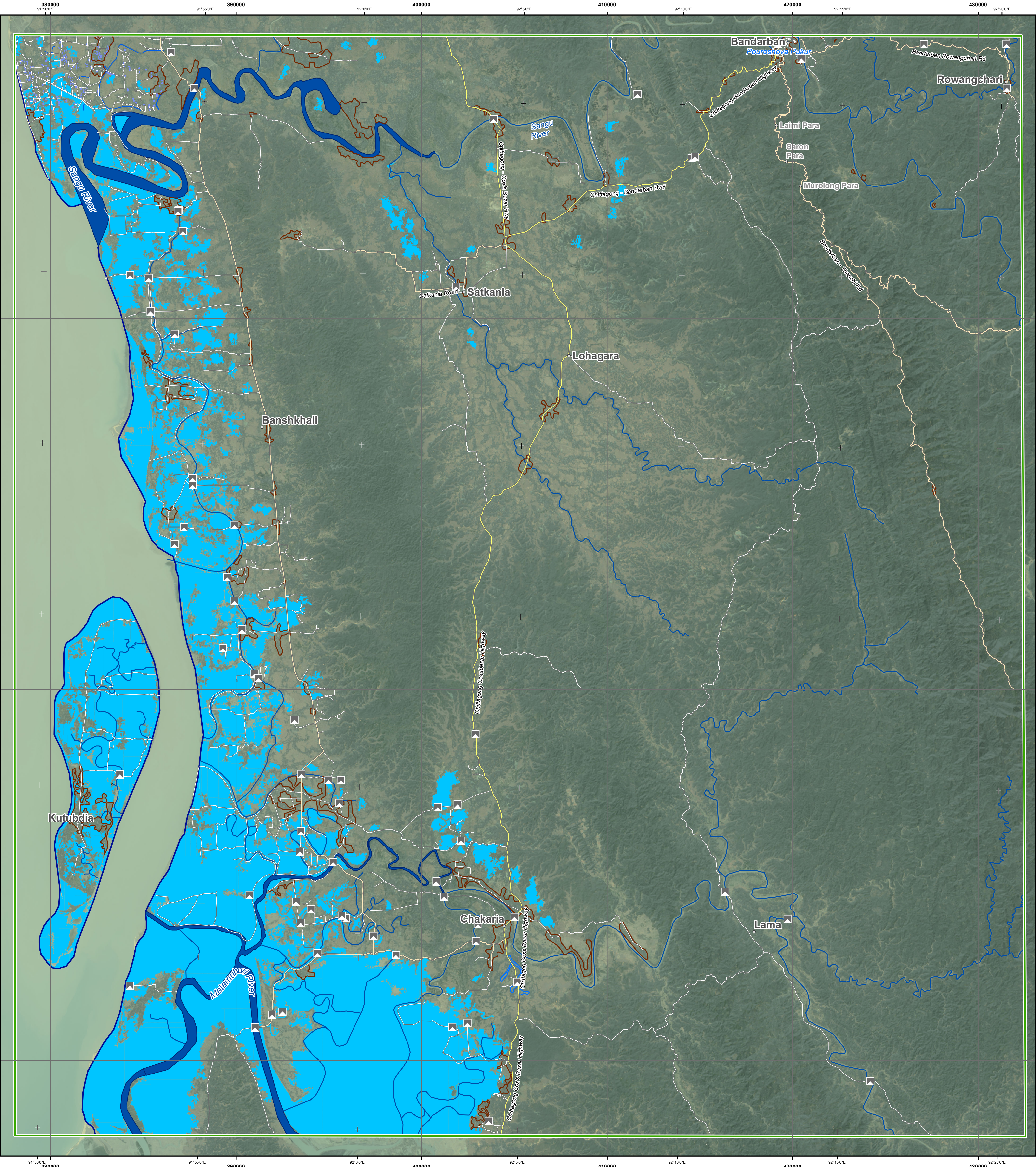
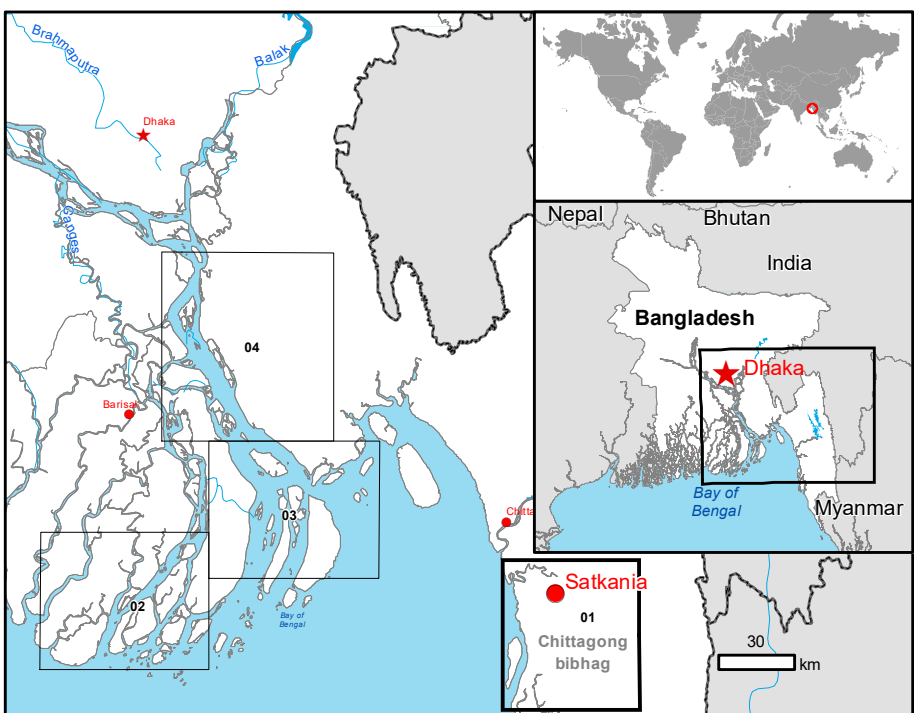
Secondary Road

Local Road

Land use - Land Cover

Features available in vector data

Consequences within the AOI			
	Unit of measurement	Affected	Total in AOI
Flooded area	ha	37837.2	
Estimated population	No. of inhabitants	429366	2535011
Settlements	Built up area	ha	74
			2076.3
	Bridge	No.	13
			68
Transportation	Primary Road	km	0
			99.5
	Secondary Road	km	9.1
			204.9
Land use	Local Road	km	153.0
			755.3
	Cropland	ha	37419.7
	Woodland	ha	4.0
			153511.4



Map Information

On 21 May 2016, Tropical Cyclone ROANU-16 hit Bangladesh, especially south and southeast regions Barisal and Chittagong. Torrential rains accompanied with strong winds have been lashing the coastal areas of S-SE Bangladesh causing heavy damages. As result, 21 people from six districts have been killed and almost half a million persons evacuated to shelters. Many areas remain flooded with houses heavily affected or destroyed. Due to torrential rains the regions have been affected by landslides.

The present map shows the flood delineation in the area of Satkania (BANGLADESH). The thematic layer has been derived from post-event satellite image using a semi-automatic approach. The estimated geometric accuracy is 10 m CE90 or better, from native positional accuracy of the background satellite image.

Data Sources

Pre-event image: Landsat-8 © U.S. Geological Survey (acquired on 23/12/2015, GSD 15 m, 0 % cloud coverage).
Post-event image: RADARSAT 2 Data and products © MacDonald, Dettwiler and Associates Ltd. (2016) (acquired on 24/05/2016 11:24 UTC, GSD 5 m) – RADARSAT is an official mark of the Canadian Space Agency – provided under COPERNICUS by the European Union and ESA, all rights reserved.

Base vector layers: OpenStreetMap © OpenStreetMap contributors, Wikimapia.org, GeoNames 2016, refined by the producer.
Inset maps: JRC 2013, Natural Earth 2012, GeoNames 2013.

Population data: Landsat 2010 © UT BATTELLE, LLC
Digital Elevation Model: SRTM 90m (NASA/USGS).

Disclaimer

Products elaborated in this Copernicus EMS Rapid Mapping activity are realized to the best of our ability, within a very short time frame, optimising the available data and information. All geographic information has limitations due to scale, resolution, date and interpretation of the original sources. No liability concerning the contents or the use thereof is assumed by the producer and by the European Union.

Map produced by SIRS released by e-GEOS (ODO).

For the latest version of this map and related products visit
<http://emergency.copernicus.eu/mapping/list-of-components/EMSR164>

ems-rapid-mapping@jrc.ec.europa.eu
© European Union

Relevant date records			
Event	21/05/2016	Situation as of	24/05/2016
Activation	22/05/2016	Map production	25/05/2016