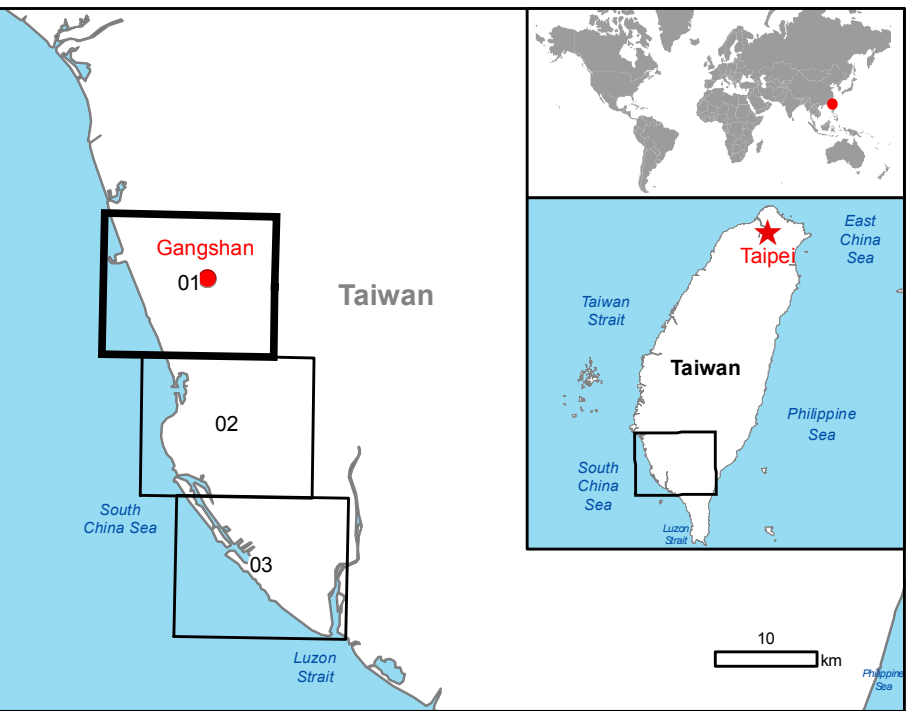


Gangshan - TAIWAN

Wind storm - Pre-event situation

Reference Map



Cartographic Information

1:26000 Full color ISO A1, medium resolution (200 dpi)



Grid: WGS 1984 UTM Zone 51N map coordinate system
Tick marks: WGS 84 geographical coordinate system

Legend

General Information	Hydrology	Industry / Utilities
<div><div></div>Area of Interest</div>	<div><div></div>Coastline</div>	<div><div></div>Storage Tank</div>
<div><div></div>Settlements</div>	<div><div></div>River</div>	<div><div></div>Quarry</div>
<div><div></div>Populated Place</div>	<div><div></div>Stream</div>	<div><div></div>Processing Facility</div>
<div><div></div>Residential</div>	<div><div></div>Canal</div>	<div><div></div>Storage Depot</div>
<div><div></div>Cemetery</div>	<div><div></div>Ditch</div>	<div><div></div>Transportation</div>
<div><div></div>Green Area</div>	<div><div></div>Lake</div>	<div><div></div>Bridge</div>
<div><div></div>Industrial</div>	<div><div></div>Reservoir</div>	<div><div></div>Railway</div>
<div><div></div>Recreational</div>	<div><div></div>River</div>	<div><div></div>Primary Road</div>
		<div><div></div>Secondary Road</div>
		<div><div></div>Local Road</div>
		<div><div></div>Harbour</div>

Exposure within the AOI			
	Unit of measurement	Total in AOI	
Estimated population	No. of inhabitants	325902	
Settlements	Residential	ha	2320.8
	Industrial	ha	2173.3
	Sports Ground	ha	87.1
	Green Area	ha	100.1
	Cemetery	ha	75.2
Transportation	Bridge	No.	62
	Primary roads	km	14.9
	Secondary roads	km	31.6
	Local Road	km	478.7
	Railway	km	31.4
	Harbour	ha	128.9
Utilities	Storage Depot	ha	93.9
	Storage Tank	ha	65.3
	Processing Facility	ha	284.2
	Quarry	ha	24.8

Map Information

Meranti typhoon, world's strongest so far this year with a category 5 storm, hit the Taiwan island on Wednesday the 14th of September 2016, threatening southern and eastern cities with strong winds, torrential rain and flooding. The authorities in Taiwan have received reports of floods and wind damages in Kaohsiung City.

The present map shows basic topographic features derived from public datasets, refined by means of visual interpretation of pre-event imagery.

Relevant date records			
Event	14/09/2016	Situation as of	N/A
Activation	14/09/2016	Map production	15/09/2016

Data Sources

Pre-event image: SPOT6 © CNES (2016), distributed by Airbus DS (acquired on 20/08/2016 02:11 UTC, GSD 1.5 m, approx. 0% cloud coverage, 16.4° off-nadir angle), provided under Copernicus by the European Union and ESA, all rights reserved.

Base vector layers: OpenStreetMap © OpenStreetMap contributors, Wikimapia.org, GeoNames 2015, refined by the producer
Inset maps: JRC 2013, Natural Earth 2012, GeoNames 2013.

Population data: Landsat 2010 © UT BATTELLE, LLC
Digital Elevation Model: SRTM 30 m

Disclaimer

Products elaborated in this Copernicus EMS Rapid Mapping activity are realized to the best of our ability, within a very short time frame, optimising the available data and information. All geographic information has limitations due to scale, resolution, date and interpretation of the original sources. The map and the information content are derived from satellite data without in situ validation. No liability concerning the contents or the use thereof is assumed by the producer and by the European Union.
Map produced by GAF AG released by SERTIT (ODO).

For the latest version of this map and related products visit
<http://emergency.copernicus.eu/mapping/list-of-components/EMSR181>

ems-rapid-mapping@jrc.ec.europa.eu
© European Union
For full Copyright notice visit <http://emergency.copernicus.eu/mapping/ems/cite-copernicus-ems-mapping-portal>