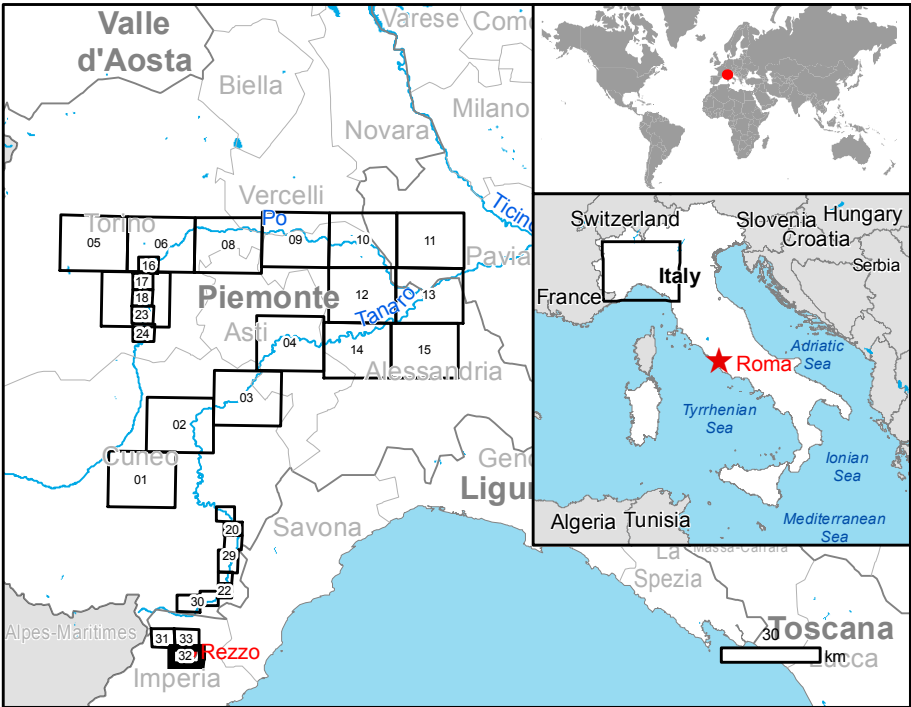


GLIDE number: N/A Activation ID: EMSR192  
Product N.: 32REZZO, v1, English

## Rezzo - ITALY

### Flood - Situation as of 30/11/2016

#### Grading Map



#### Cartographic Information

1:14000 Full color ISO A1, medium resolution (200 dpi)



Grid: WGS 1984 UTM Zone 32N map coordinate system  
Tick marks: WGS 84 geographical coordinate system

#### Legend

- Crisis Information**
  - Landslide (30/11/2016)
  - Road, Negligible to slight damage
- Hydrology**
  - Stream
- General Information**
  - Area of Interest
- Transportation**
  - Bridge
  - Secondary Road
  - Local Road
- Settlements**
  - Populated Place
- Physiography**
  - Contour lines and elevation (m)

#### Land use - Land Cover

Features available in vector data

Consequences within the AOI		Unit of measurement	Destroyed	Highly damaged	Moderately damaged	Negligible to slight damage	Total affected	Total in AOI
Landslide	No. of inhabitants	ha	0	0	0	0	0	0.8
Estimated population	No.	0	0	0	0	0	0	3
Transportation	Bridge	No.	0	0	0	0	0	43.0
	Secondary roads	km	0.0	0.0	0.0	0.0	0.0	78.3
	Local roads	km	0.0	0.0	0.0	0.0	0.0	71.1
Land use	Cropland	ha	0.0	0.0	0.0	0.0	0.0	851.4
	Grassland	ha	0.0	0.0	0.0	0.0	0.0	433.2
	Scrub	ha	0.0	0.0	0.0	0.0	0.0	

#### Map Information

Starting from November 22nd, heavy rainfalls are affecting the North West of Italy, particularly the region of Piemonte and Liguria. The bad weather conditions and the persistence of precipitations have caused the increasing of hydrometric levels of all the rivers in particular in the Basin of Po River. Resulting floods have induced damages and difficulties: cutting roads, mud deposit, and vehicles destruction; as a precaution population has been evacuated.

The present map shows the damage grade assessment in the area of Rezzo (ITALY). The thematic layer has been derived from post-event satellite image by means of visual interpretation. The estimated geometric accuracy is 1 m CE90 or better, from native positional accuracy of the background satellite image.

Relevant date records			
Event	24/11/2016	Situation as of	30/11/2016
Activation	24/11/2016	Map production	02/12/2016

#### Data Sources

Pre-event image: Pre-event image: ESRI World Imagery © DigitalGlobe (acquired on 07/06/2014, GSD 0.5 m, cloud coverage 0%).  
Post-event image: Pleiades-1A © CNES (2016), distributed by Airbus DS (acquired on 30/11/2016 10:10 UTC, GSD 0.5 m, approx. 0% cloud coverage, 30.2° off-nadir angle), provided under COPERNICUS by the European Union and ESA, all rights reserved.

Base vector layers: OpenStreetMap © OpenStreetMap contributors, Wikimapia.org, GeoNames 2015, refined by the producer.  
Inset maps: JRC 2013, © EuroGeographics, Natural Earth 2012, CCM River DB © EUJRC2007, GeoNames 2013.

Population data: Landsat 2010 © UT BATTELLE, LLC  
Digital Elevation Model: SRTM 30m (NASA/USGS)

#### Disclaimer

Products elaborated in this Copernicus EMS Rapid Mapping activity are realized to the best of our ability, within a very short time frame, optimising the available data and information. All geographic information has limitations due to scale, resolution, date and interpretation of the original sources. The map and the information content are derived from satellite data without in situ validation. No liability concerning the contents or the use thereof is assumed by the producer and by the European Union.

Map produced by e-GEOS released by SERTIT (ODO).

For the latest version of this map and related products visit  
<http://emergency.copernicus.eu/mapping/list-of-components/EMSR192>

ems-rapid-mapping@jrc.ec.europa.eu  
© European Union  
For full Copyright notice visit <http://emergency.copernicus.eu/mapping/ems/cite-copernicus-ems-mapping-portal>