

Proserpine - AUSTRALIA

Flood - Situation as of 05/04/2017

Delineation Map

Cartographic Information

1:26000

Full color ISO A1, medium resolution (200 dpi)

0 0.5 1 2 km

Grid: WGS 1984 UTM Zone 55S map coordinate system
Tick marks: WGS 84 geographical coordinate system

Legend

Crisis Information

Flooded Area
(05/04/2017 00:17 UTC)

General Information

Area of Interest

Clouds

Settlements

Populated Place

Land use - Land Cover

Features available in vector data

Hydrology

River

Stream

Lake

Reservoir

River

Land Subject to Inundation

Point of Interest

Institutional

Religious

Transportation

Transportation

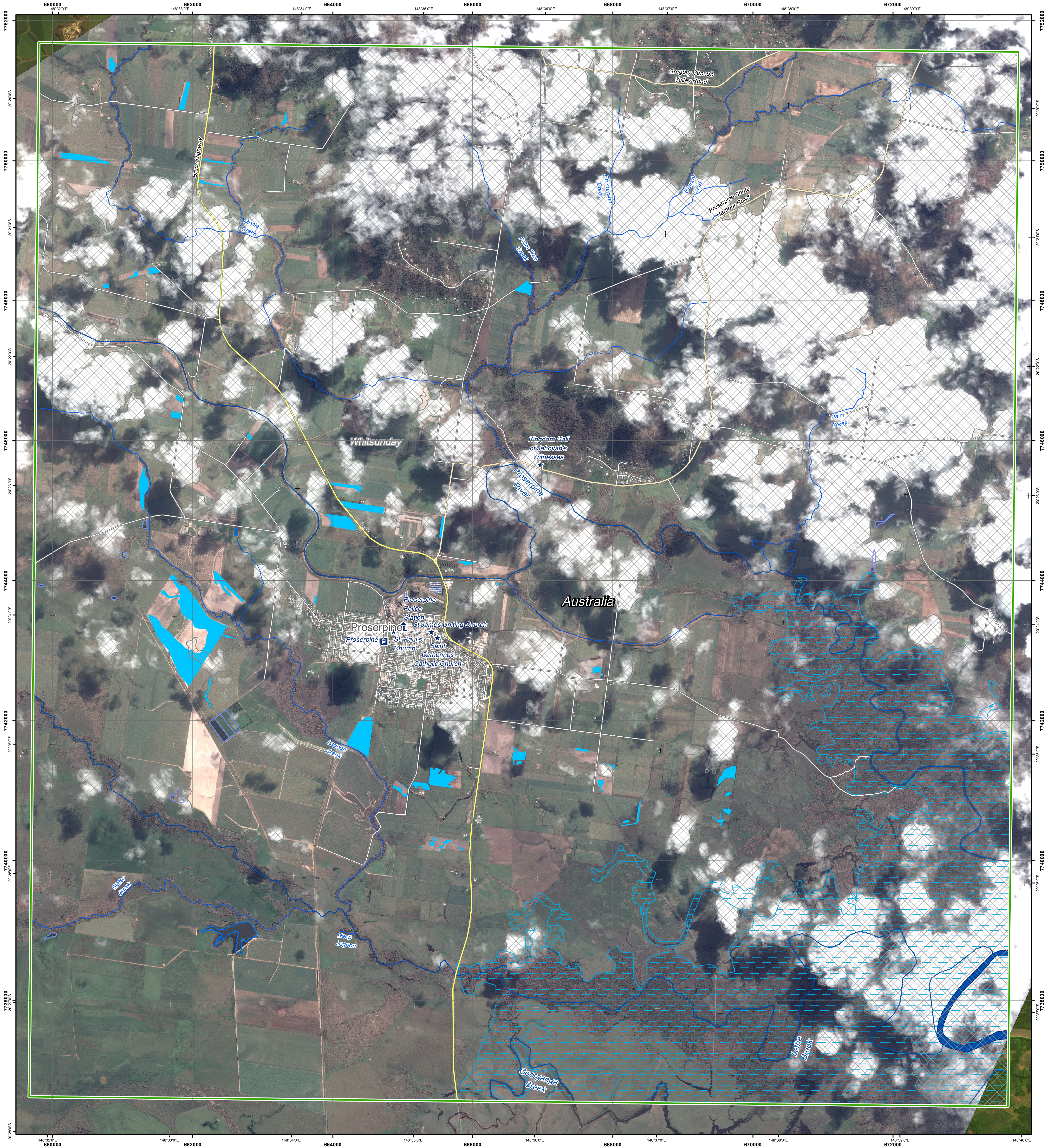
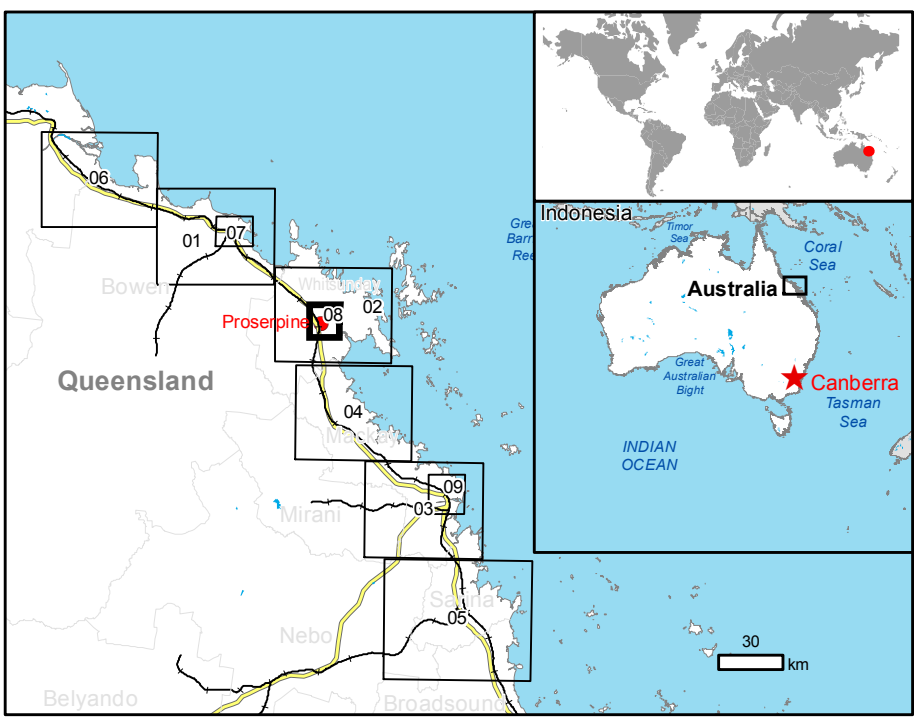
Primary Road

Secondary Road

Local Road

Consequences within the AOI

	Unit of measurement	Affected	Total in AOI
Flooded area	ha	160.0	
Estimated population	No. of Inhabitants	25	7339
Transportation	Primary roads	km	0
	Secondary roads	km	0
	Local roads	km	0.3
Land use	Cropland	ha	159.0
	Grassland	ha	0
	Woodland	ha	0.1



Map Information

Tropical Cyclone DEBBIE made landfall on 28 March 2017 in northeast Australia's Queensland state as a category 4 storm (with wind speeds of 240km/h). Extensive coastal inundation is already occurring and some communities have been evacuated. More intense flooding is expected as the cyclone moves inland.

The present map shows the flood delineation in the area of Proserpine. The thematic layer has been derived from post-event satellite image using a by means of visual interpretation. The estimated geometric accuracy is 5 m CE90 or better, from native positional accuracy of the background satellite image.

Data Sources

Pre-event image: ESRI World Imagery © DigitalGlobe (acquired on 19/07/2014, GSD 0.5 m, cloud coverage 0%).
Post-event image: Pleiades-1B © CNES (2017) (acquired on 05/04/2017 00:17, GSD 0.75 m, 25% cloud coverage, 17.7 off-nadir angle) provided under International Charter, all rights reserved.

Base vector layers: Land Use vector data provided by the Queensland Land Use Mapping Program (QLUMP), produced by the Queensland Government © State of Queensland (Department of Science, IT, Innovation and the Arts), 2017.
Land Use vector data refined and adapted by EMS over the standard dataset.
OpenStreetMap © OpenStreetMap contributors, Wikimapia.org, GeoNames 2015, refined by the producer.
Inset maps: JRC 2013, Natural Earth 2012, GeoNames 2013.

Population data: Landsat 2010 © UT BATTELLE, LLC
Digital Elevation Model: SRTM 90m (NASA/USGS)



Disclaimer

Products elaborated in this Copernicus EMS Rapid Mapping activity are realized to the best of our ability, within a very short time frame, optimising the available data and information. All geographic information has limitations due to scale, resolution, date and interpretation of the original sources. No liability concerning the contents or the use thereof is assumed by the producer and by the European Union.

Map produced by ITHACA released by e-GEOS (ODO).

For the latest version of this map and related products visit
<http://emergency.copernicus.eu/mapping/list-of-components/EMSR200>

ems-rapid-mapping@jrc.ec.europa.eu
© European Union
For full Copyright notice visit <http://emergency.copernicus.eu/mapping/ems/cite-copernicus-ems-mapping-portal>

Relevant date records

Event	27/03/2017	Situation as of	05/04/2017
Activation	03/04/2017	Map production	05/04/2017

