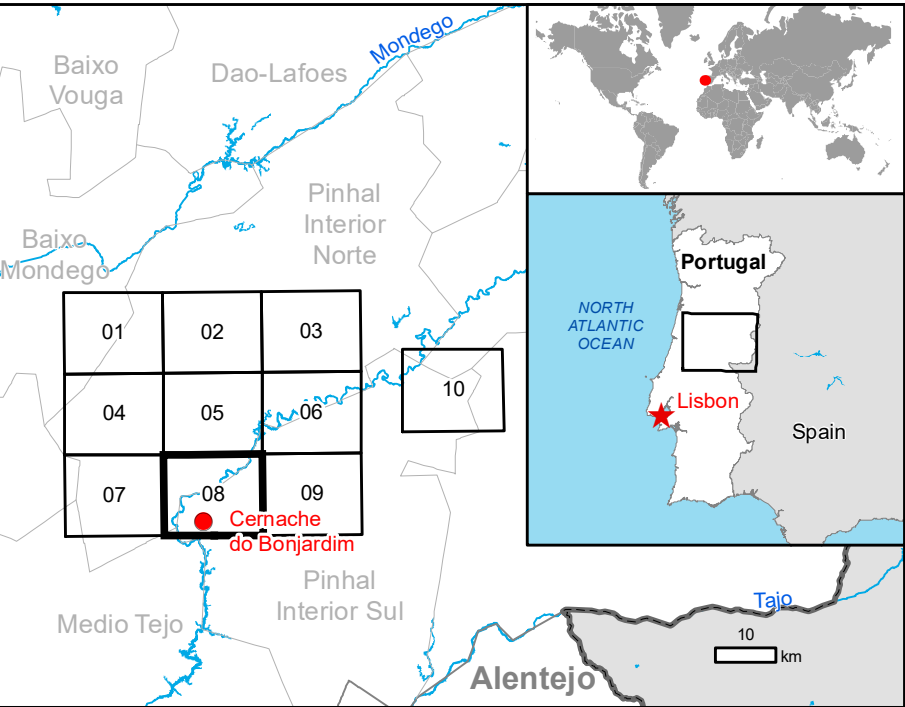


Cernache do Bonjardim - PORTUGAL

Fire - Situation as of 20/06/2017

Grading Map



Cartographic Information

1:25000 Full color ISO A1, medium resolution (200 dpi)



Grid: WGS 1984 UTM Zone 29N map coordinate system
Tick marks: WGS 84 geographical coordinate system

Legend

- Transportation Grading**
 - Road, Negligible to slight damage
- Fire Grading**
 - Highly Damaged
 - Moderately Damaged
 - Negligible to slight damage
- Building Block Grading**
 - Highly Damaged
 - Moderately Damaged
 - Negligible to slight damage
- General Information**
 - Area of Interest
- Administrative boundaries**
 - Municipality
- Settlements**
 - Populated Place
- Transportation**
 - Primary Road
 - Secondary Road
 - Local Road

Consequences within the AOI							
Burnt area	Unit of measurement	Destroyed	Highly damaged	Moderately damaged	Negligible to slight damage	Total affected	Total in AOI
Estimated population	No. of inhabitants	0.0	4311.3	4164.7	1111	9486.6	9486.6
Settlements	Residential	ha	0.0	10.2	99.8	42.8	152.8
	Commercial	ha	0.0	0.0	0.0	0.0	0.0
	Industrial	ha	0.0	0.4	0.0	0.0	0.4
	Institutional	ha	0.0	0.0	0.0	0.0	0.0
	Recreational	ha	0.0	0.0	0.3	0.0	0.3
Transportation	Primary roads	km	0.0	0.0	0.0	1.4	1.4
	Secondary roads	km	0.0	0.0	0.0	13.6	13.6
	Local roads	km	0.0	0.0	0.0	160.0	160.0

Map Information

Starting on Saturday 17th June 2017 during an intense heatwave of 38-43 degrees Celsius and rainless thunderstorms, a total of 156 fires erupted across Portugal, particularly in mountainous areas 150 km northeast of Lisbon. The initial fires began in the Pedregão Grande municipality, Leiria district, before spreading dramatically. On 18 June the Portuguese authorities reported numerous casualties and injured including firefighters. More than 1 700 firefighters have been dispatched to combat the blazes.

The present map shows the fire delineation in the area of Cernache do Bonjardim (Portugal). The thematic layer has been derived from post-event satellite image by means of visual interpretation. The estimated geometric accuracy is 5 m CE90 or better, from native positional accuracy of the background satellite image.

Relevant date records			
Event	17/06/2017	Situation as of	20/06/2017
Activation	18/06/2017	Map production	05/07/2017

Data Sources

Pre-event image: SPOT 7 © Airbus DS (2016), (acquired on 22/12/2016 11:05 UTC, GSD 1.5 m, approx. 0% cloud coverage, 16.4° off-nadir angle), provided under Copernicus by European Union and ESA, all rights reserved.
Post-event image: SPOT 7 © Airbus DS (2017), (acquired on 20/06/2017 11:11 UTC, GSD 1.5 m, approx. 2.3% cloud coverage, 19.9° off-nadir angle), provided under Copernicus by European Union and ESA, all rights reserved.

Base vector layers: OpenStreetMap © OpenStreetMap contributors, Wikimapia.org, GeoNames 2015, refined by the producer.
Inset maps: JRC 2013, © EuroGeographics, Natural Earth 2012, CCM River DB © EURC2007, GeoNames 2013.

Population data: Landscan 2010 © UT BATTELLE, LLC
Digital Elevation Model: SRTM 90m (NASA/USGS)

Disclaimer

Products elaborated in this Copernicus EMS Rapid Mapping activity are realized to the best of our ability, within a very short time frame, optimising the available data and information. All geographic information has limitations due to scale, resolution, date and interpretation of the original sources. The map and the information content are derived from satellite data without in situ validation. No liability concerning the contents or the use thereof is assumed by the producer and by the European Union.

Map produced by SIRS released by SERTIT (ODO).

For the latest version of this map and related products visit
<http://emergency.copernicus.eu/mapping/list-of-components/EMSR207>

ems-rapid-mapping@jrc.ec.europa.eu
© European Union
For full Copyright notice visit <http://emergency.copernicus.eu/mapping/ems/cite-copernicus-ems-mapping-portal>