

Chozas de la Poleosa - SPAIN

Fire - Situation as of 27/06/2017

Delineation Map

Cartographic Information

1:25000

Full color ISO A1, medium resolution (200 dpi)

0 0.5 1 2 km

Grid: WGS 1984 UTM Zone 29N map coordinate system
Tick marks: WGS 84 geographical coordinate system

Legend

Crisis Information

Burnt Area (27/06/2017)

General Information

Area of Interest

Sensor Footprint

Not Analyzed

Missing data

Administrative boundaries

Municipality

Settlements

Populated Place

Residential

Agricultural

Commercial

Educational

Institutional

Urbanized Multi-functional

Point of Interest

Educational

Institutional

Transportation

Bridge

Secondary Road

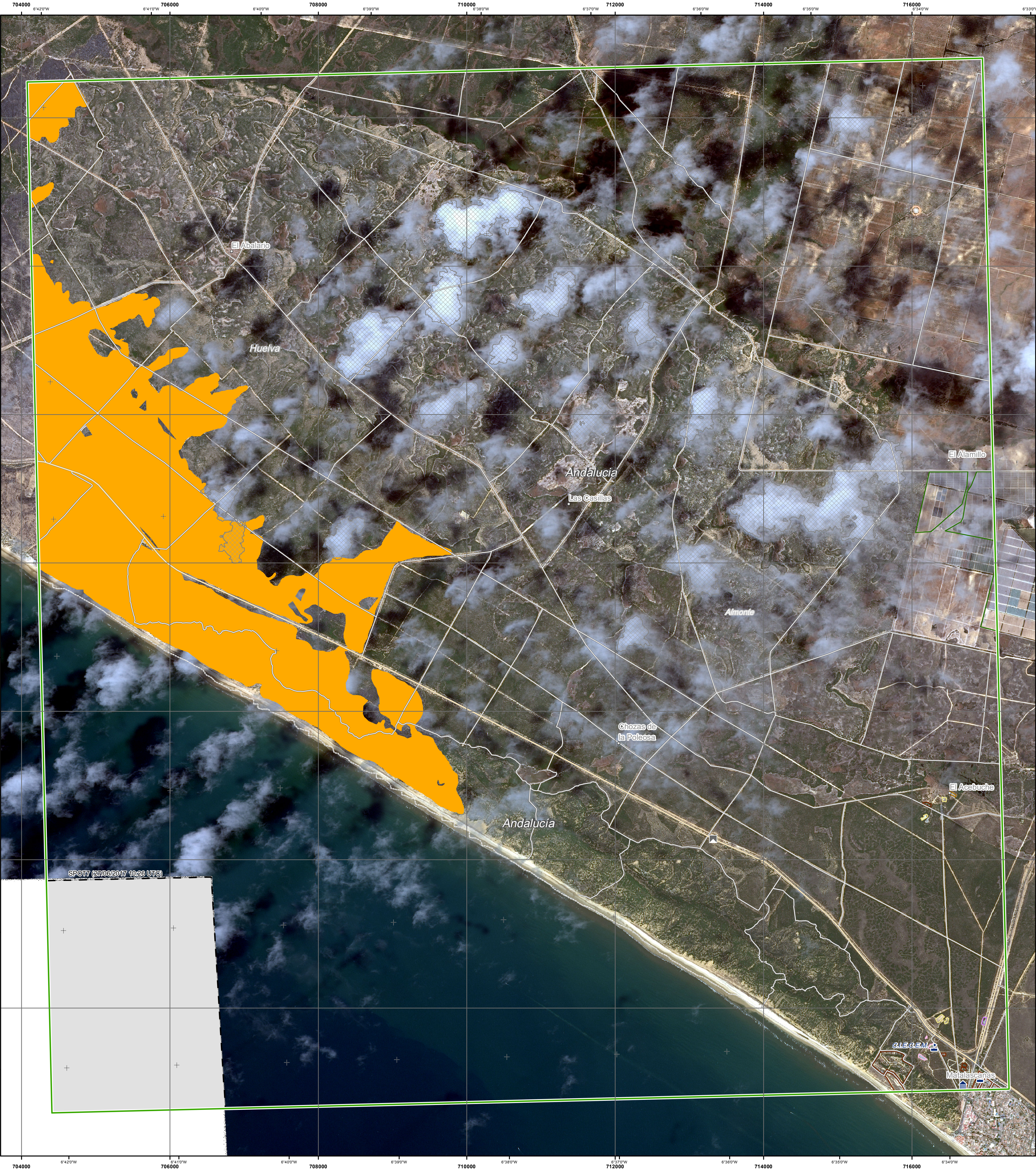
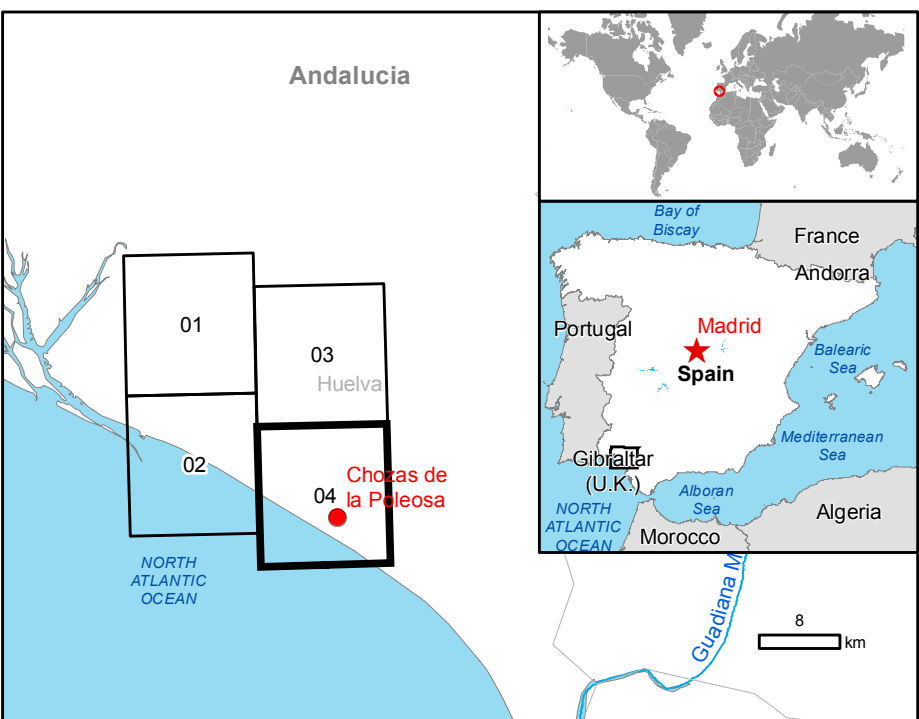
Local Road

Consequences within the AOI

	Unit of measurement	Affected	Total in AOI
Burnt area	ha	85	1511.2
Estimated population	No. of inhabitants	0.0	1914
Settlements	Residential	ha	0.0
	Commercial	ha	0.0
	Institutional	ha	0.0
	Multi-functional	ha	0.0
	Educational	ha	0.0
Transportation	Bridge	No.	0.0
	Local Roads	km	0.0
	Secondary Roads	km	0.0
Land use	Cropland	ha	0.0
	Grassland	ha	0.0
	Scrub	ha	1098.2
	Bare soil	ha	0.0
	Woodland	ha	826.1

Land use - Land Cover

Features available in vector data



Map Information

A major forest fire in southern Spain has forced the evacuation of more than 1,500 people from homes, campsites and hotels, according to a government official. Like much of Spain, the area in Huelva is on high alert for forest fires because of a heatwave. The fire started on Saturday night on Spain's southern coast, then advanced east to reach the Doñana Nature Reserve, one of the country's most important wildlife sanctuaries and a UNESCO World Heritage site since 1994. The emergency services are working to contain the fire but windy conditions made it difficult to predict when the blaze would be brought completely under control.

The present map shows the fire delineation in the area of Chozas de la Poleosa (Spain). The thematic layer has been derived from post-event satellite image by means of visual interpretation. The estimated geometric accuracy is 5 m CE90 or better, from native positional accuracy of the background satellite image.

Data Sources

Pre-event image: ESRI World Imagery © IGN/CNIG (acquired on 15/05/2013, GSD 2.4 m, cloud coverage 0%).
Post-event image: SPOT7 © Airbus DS (2017), (acquired on 27/06/2017 10:26 UTC, GSD 1.5 m, approx. 14% cloud coverage, 36° off-nadir angle), provided under Copernicus by European Union and ESA, all rights reserved.

Base vector layers: OpenStreetMap © OpenStreetMap contributors, Wikimapia.org, GeoNames 2015, refined by the producer.
Inset maps: JRC 2013, © EuroGeographics, Natural Earth 2012, CCM River DB © EUJRC2007, GeoNames 2013.

Population data: Landsat 2010 © UT BATTELLE, LLC
Digital Elevation Model: SRTM 90 m (NASA/USGS)

Disclaimer

Products elaborated in this Copernicus EMS Rapid Mapping activity are realized to the best of our ability, within a very short time frame, optimising the available data and information. All geographic information has limitations due to scale, resolution, date and interpretation of the original sources. The map and the information content are derived from satellite data without in situ validation. No liability concerning the contents or the use thereof is assumed by the producer and by the European Union.

Map produced by GAF AG released by e-GEOS (ODO).

For the latest version of this map and related products visit <http://emergency.copernicus.eu/mapping/list-of-components/EMSR209>

ems-rapid-mapping@jrc.ec.europa.eu
© European Union
For full Copyright notice visit <http://emergency.copernicus.eu/mapping/ems/cite-copernicus-ems-mapping-portal>

Relevant date records			
Event	24/06/2017	Situation as of	27/06/2017
Activation	26/06/2017	Map production	27/06/2017