

Rala - SPAIN  
Fire - Situation as of 04/08/2017  
Grading Map

Cartographic Information

1:10000

Full color ISO A1, medium resolution (200 dpi)

0 0.25 0.5 1 km

Grid: WGS 1984 UTM Zone 30N map coordinate system  
Tick marks: WGS 84 geographical coordinate system

Legend

Crisis Information

Fire Grading

- Destroyed
- Highly Damaged
- Moderately Damaged

Hydrology

- Reservoir
- River
- Reservoir

General Information

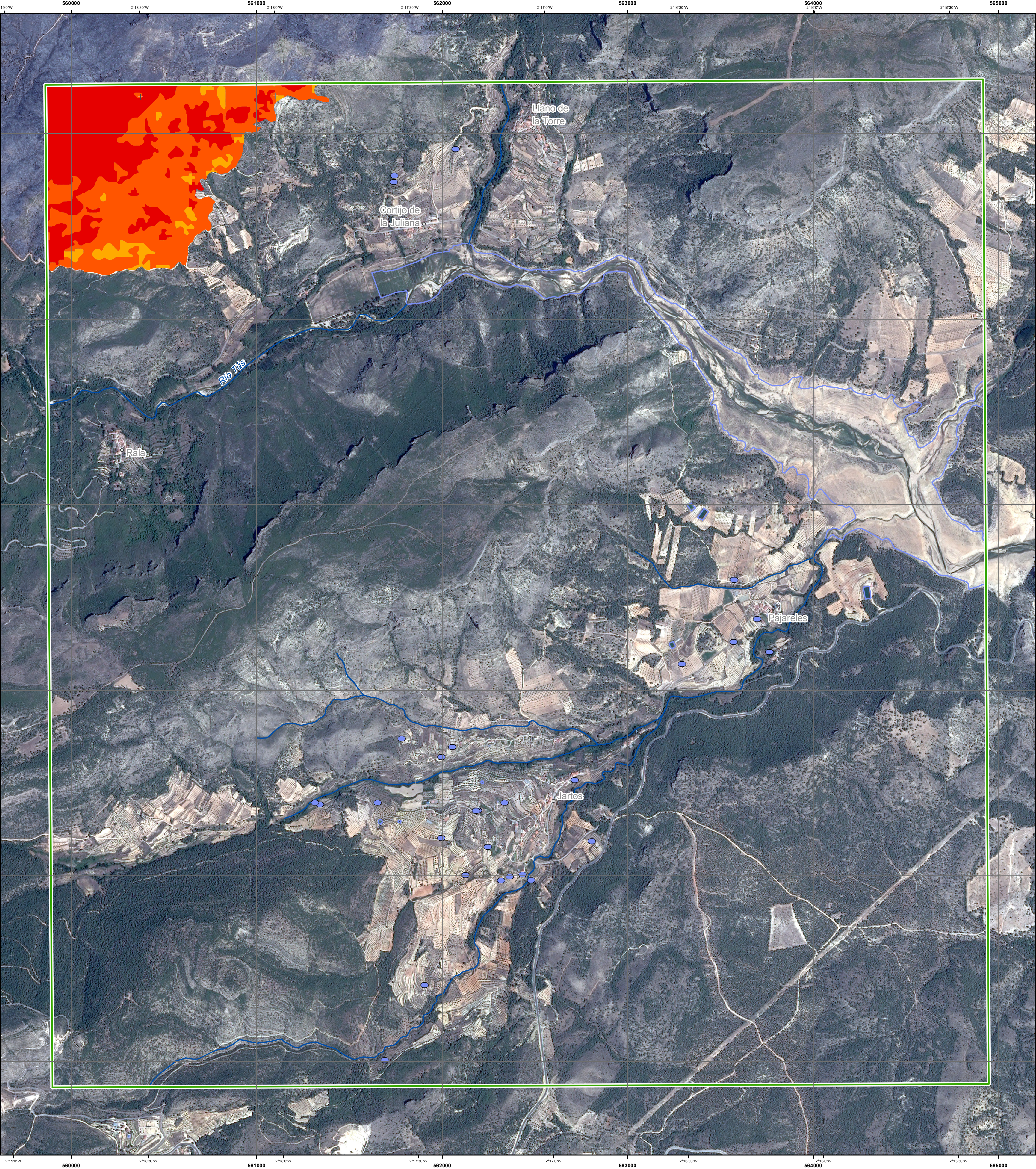
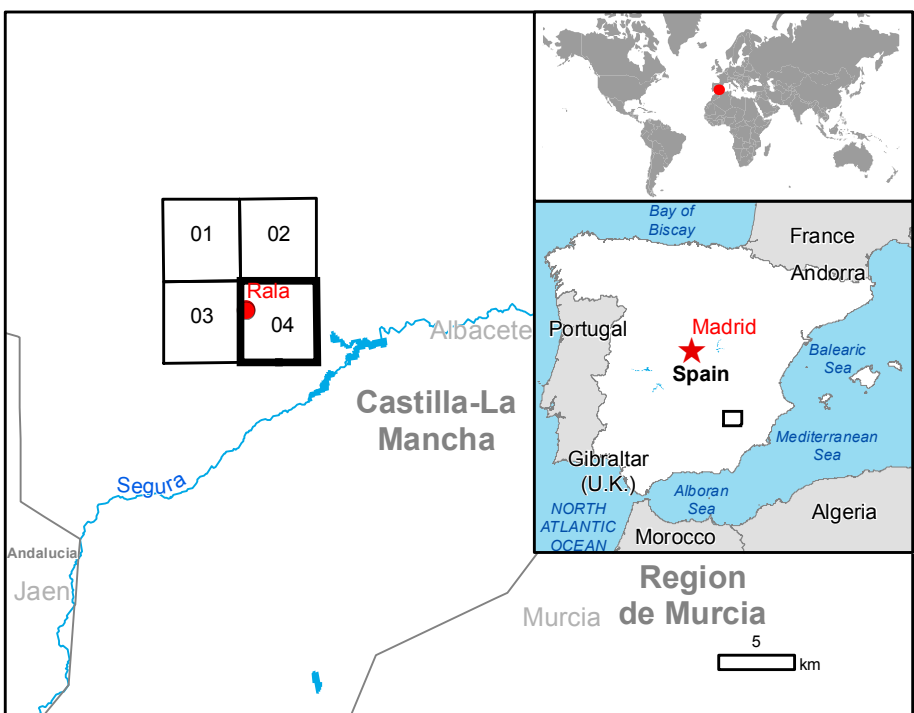
- Area of Interest

Settlements

- Populated Place

Consequences within the AOI							
Unit of measurement		Destroyed	Highly damaged	Moderately damaged	Negligible to slight damage	Total affected	Total in AOI
Burnt area	ha	42.8	51.3	5.6	0.0	99.7	99.7
Estimated population	No. of inhabitants	0	0	0	0	0	118
Settlements	Residential	No.	0	0	0	0	466
	Agriculture	No.	0	0	0	0	2
	Cropland	ha	0	0	0	0	646.5
	Grassland	ha	0	0	0	0	185.3
	Scrub	ha	42.8	51.3	5.7	99.7	821.6
Land use		ha	0	0	0	0	980.1

Land use - Land Cover  
Features available in vector data



Map Information

A large area in a dense pine forest with difficult topography in Yeste in southeastern Spain burnt more than 3 000 hectares in only few days, while it affected 12 villages (more than 500 people) were evacuated. Vegetation and environmental damage is also a concern.

The present map shows the damage grade assessment in the area of Rala (Spain). The thematic layer has been derived from post-event satellite image by means of visual interpretation. The estimated geometric accuracy is 5 m CE90 or better, from native positional accuracy of the background satellite image.

Data Sources

Pre-event image: ESRI World Imagery © DigitalGlobe (acquired on 12/08/2013, GSD 0.5 m, approx. 0% cloud coverage in AoI).

Post-event image: SPOT6/7 © Airbus DS (2017), (acquired on 04/08/2017 at 10:34 UTC, GSD 1.5 m, approx. 0% cloud coverage in AoI, 8° off-nadir angle), provided under COPERNICUS by the European Union and ESA, all rights reserved.

Base vector layers: OpenStreetMap © OpenStreetMap contributors, Wikimapia.org, GeoNames 2015, refined by the producer.  
Inset maps: JRC 2013, © EuroGeographics, Natural Earth 2012, CCM River DB © EUJRC2007, GeoNames 2013.

Population data: Landscan 2010 © UT BATTELLE, LLC  
Digital Elevation Model: SRTM 90m (NASA/USGS)

Disclaimer

Products elaborated in this Copernicus EMS Rapid Mapping activity are realized to the best of our ability, within a very short time frame, optimising the available data and information. All geographic information has limitations due to scale, resolution, date and interpretation of the original sources. The map and the information content are derived from satellite data without in situ validation. No liability concerning the contents or the use thereof is assumed by the producer and by the European Union.

Map produced by GAF AG released by e-GEOS (ODO).

For the latest version of this map and related products visit  
<http://emergency.copernicus.eu/EMSR216>

jrc-ems-rapidmapping@ec.europa.eu  
© European Union  
For full Copyright notice visit <http://emergency.copernicus.eu/mapping/ems-cite-copernicus-ems-mapping-portal>

Relevant date records			
Event	27/07/2017	Situation as of	04/08/2017
Activation	03/08/2017	Map production	05/08/2017