

Salina Cruz Refineria - MEXICO

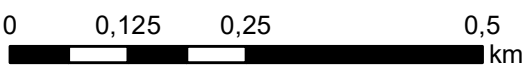
Earthquake - Situation as of 09/09/2017

Grading Map

Cartographic Information

1:8000

Full color ISO A1, medium resolution (200 dpi)



Grid: WGS 1984 UTM Zone 15N map coordinate system
Tick marks: WGS 84 geographical coordinate system



Legend

Building Grading

- Highly Damaged
- Moderately Damaged
- Negligible to slight damage

Crisis Information

- Leakage

General Information

- Area of Interest

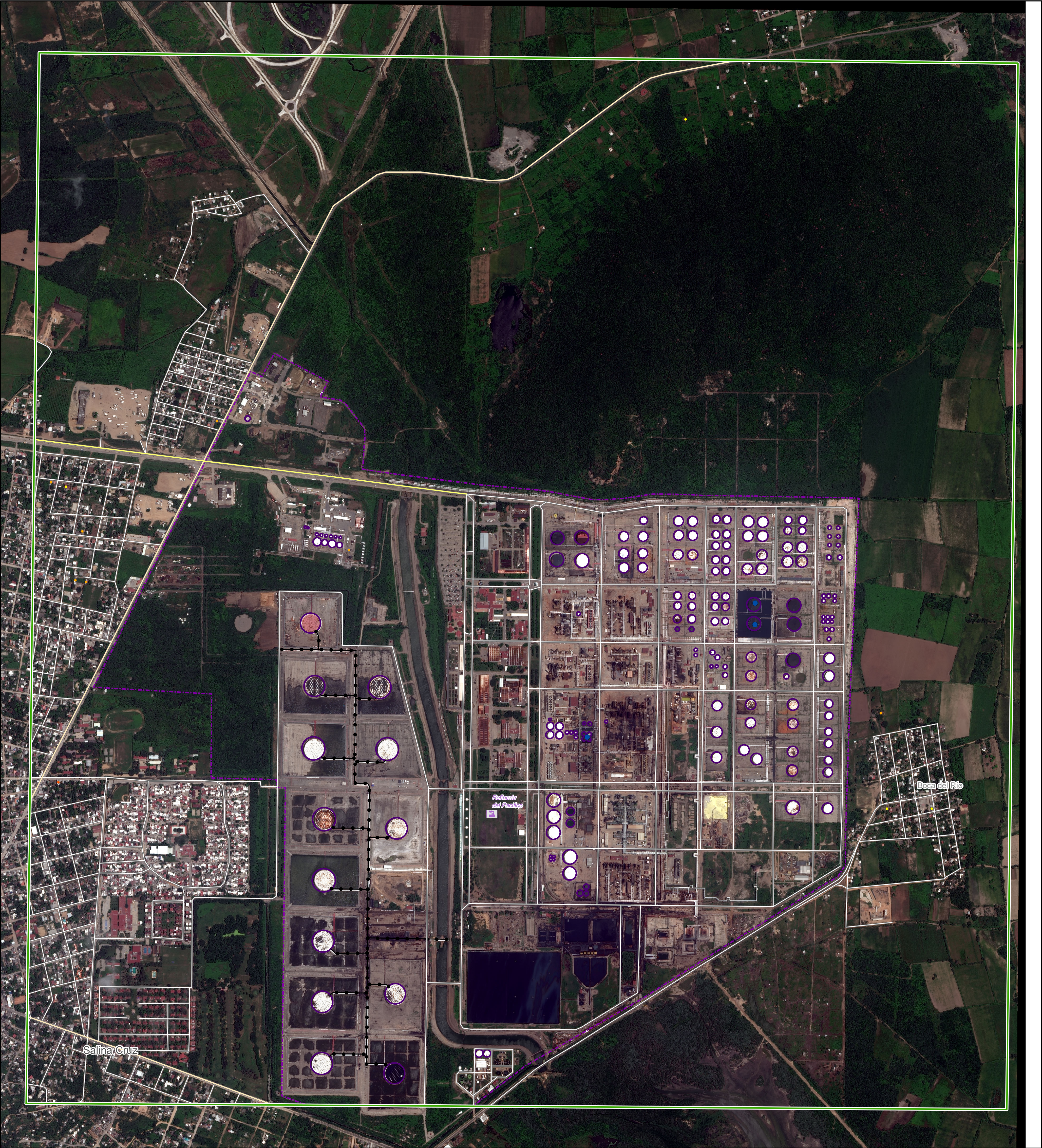
Settlements

- Populated Place

Industry / Utilities

- Processing Facility
- Pipeline
- Storage Tank
- Storage Depot
- Primary Road
- Secondary Road
- Local Road

Consequences within the AOI						
	Unit of measurement	Destroyed	Highly damaged	Moderately damaged	Negligible to slight damage	Total affected
Leakage	No.					3
Estimated population	No. of people					N/A
Settlements						10777
Residential	No.	0	1	6	4	11
Industrial	No.	0	0	1	0	1
Primary roads	km	0.0	0.0	0.0	0.0	1.9
Secondary roads	km	0.0	0.0	0.0	0.0	5.9
Local roads	km	0.0	0.0	0.0	0.0	73.9
Utilities						
Processing Facility	No.	0	0	0	0	1
Storage Tank	No.	0	0	0	0	174
Storage Depot	No.	0	0	0	0	1
Pipeline	km	0.0	0.0	0.0	0.0	4.17



Map Information

On the 7th of September 2017 just before midnight, local time, a magnitude 8.2 quake struck off the Mexico's southern Pacific coast, 165km west of the state of Chiapas. The earthquake has killed many people and caused mass evacuation. The states of Oaxaca and Chiapas were badly impacted and thousands of houses were destroyed in many towns.

The present map shows the damage grade assessment (Grading maps) in the area of Salina Cruz Refineria (Mexico). The thematic layer has been derived from post-event satellite image using means of visual interpretation. The estimated geometric accuracy is 5 m CE90 or better, from native positional accuracy of the background satellite image.

Data Sources

Pre-event image: ESRI World Imagery © DigitalGlobe (acquired on 06/03/2017, GSD 0.5 m, approx. 0% cloud coverage in AoI).
Post-event image: WorldView-3 © DigitalGlobe (acquired on 09/09/2017 17:24, GSD 0.5 m, 17 % cloud coverage, 14.21° off-nadir angle), provided under COPERNICUS by the European Union and ESA.

Base vector layers: OpenStreetMap © OpenStreetMap contributors, Wikimapia.org, GeoNames 2015, refined by the producer.
Inset maps: JRC 2013, Natural Earth 2012, GeoNames 2013.

Population data: Landsat 2010 © UT BATTELLE, LLC
Digital Elevation Model: SRTM 90m (NASA/USGS)

Disclaimer

Products elaborated in this Copernicus EMS Rapid Mapping activity are realized to the best of our ability, within a very short time frame, optimising the available data and information. All geographic information has limitations due to scale, resolution, date and interpretation of the original sources. The map and the information content are derived from satellite data without in situ validation. No liability concerning the contents or the use thereof is assumed by the producer and by the European Union.

Map produced by SERTIT released by SERTIT (ODO).

For the latest version of this map and related products visit
<http://emergency.copernicus.eu/EMSR240>

jrc-ems-rapidmapping@ec.europa.eu
© European Union
For full Copyright notice visit <http://emergency.copernicus.eu/mapping/ems/cite-copernicus-ems-mapping-portal>

Relevant date records			
Event	08/09/2017	Situation as of	09/09/2017
Activation	11/09/2017	Map production	13/09/2017