

YLITORNIO SOUTHERN - FINLAND
Flood - Situation as of 18/05/2018
Delineation Map - MONIT01

Cartographic Information

1:33000

Full color ISO A1, medium resolution (200 dpi)

0 0,5 1 2
km

Grid: WGS 1984 UTM Zone 34N map coordinate system
Tick marks: WGS 84 geographical coordinate system

Legend

Crisis Information

- Flooded Area (18/05/2018 03:21 UTC)
- Previous Flooded Area (17/05/2018 15:49 UTC)

General Information

- Area of Interest

Placenames

- Placename

Administrative boundaries

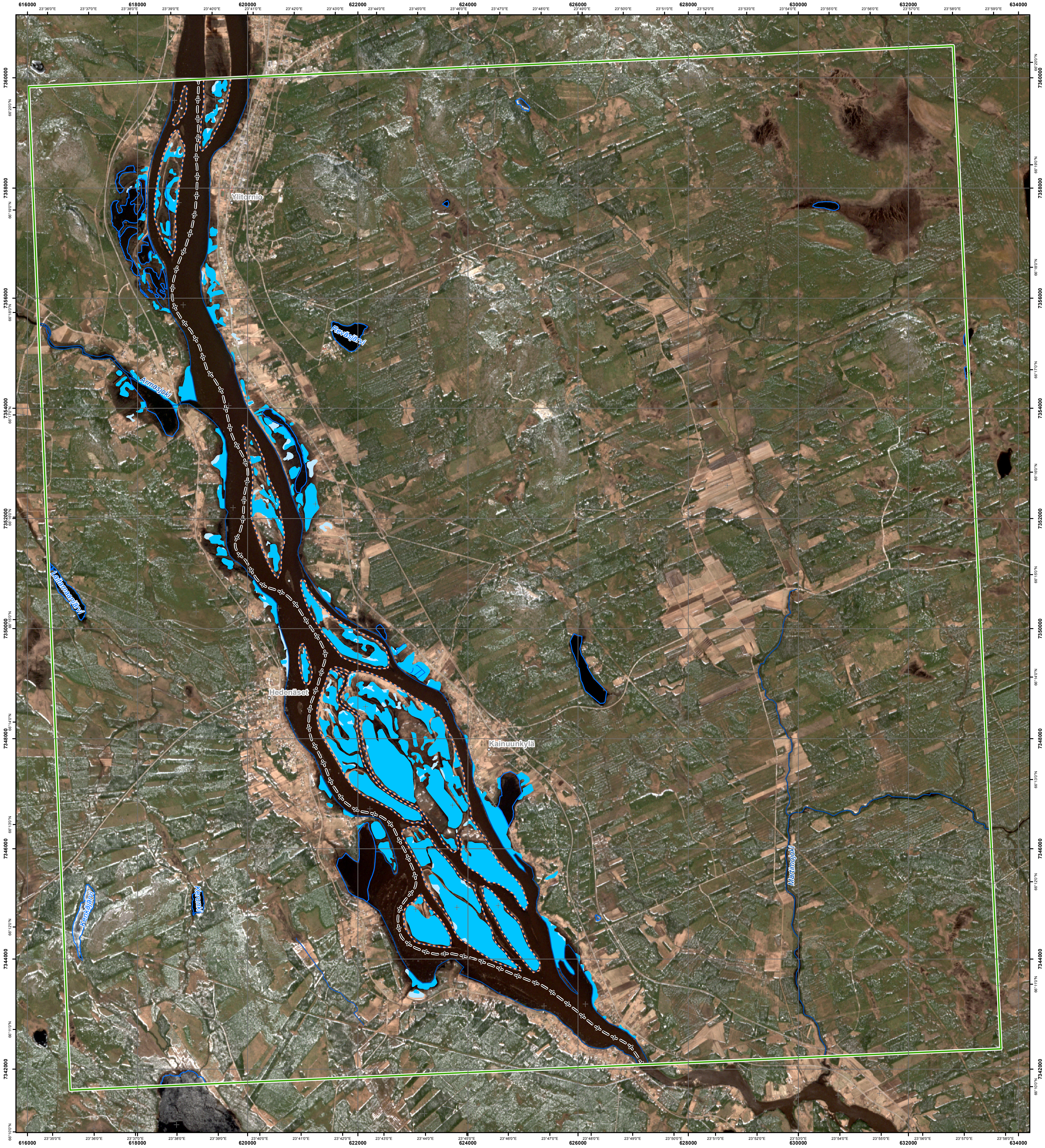
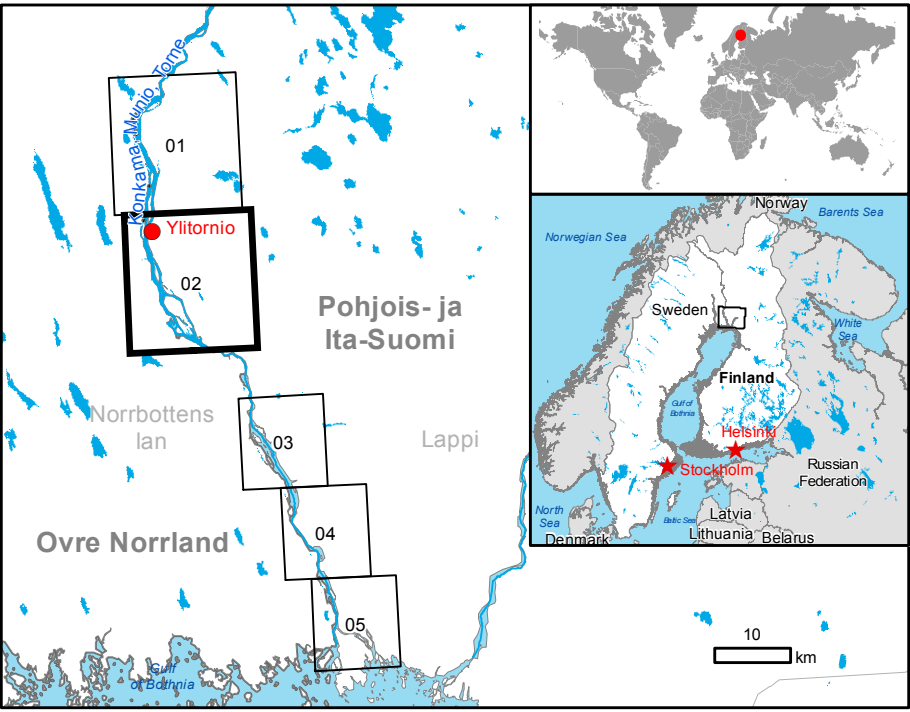
- International Boundary

Hydrography

- River
- Stream
- Island
- Lake
- River

Consequences within the AOI

	Unit of measurement	Affected	Total in AOI
Flooded area	ha	858.7	



Map Information

Extensive spring flooding is expected in the Finnish Lapland due to the snow melt made worse by the warm temperatures and the intermittent rains. The floods are estimated to reach the maximum in the coming days and flooded rivers could affect residential areas in Tornio.

The present map shows the flood delineation in the area of Ylitornio Southern (Finland). The thematic layer has been derived from post-event satellite image using a semi-automatic approach. The estimated geometric accuracy is 5 m CE90 or better, from native positional accuracy of the background satellite image.

Data Sources

Pre-event image: Sentinel-2A/B. (2018), (acquired on 12/05/2018 at 10:20 UTC, GSD 10.0 m, approx. 0% cloud coverage in AOI), provided under COPENICUS by the European Union and ESA.

Post-event image: Sentinel-1A/B. (2018), (acquired on 17/05/2018 at 15:49 UTC, GSD 10 m) provided under COPENICUS by the European Union and ESA. COSMO-SkyMed ASI (2018), distributed by e-GEOS S.p.A. (acquired on 18/05/2018 at 03:21 UTC, GSD 2.5 m), provided under COPENICUS by the European Union and ESA, all rights reserved.

Base vector layers: OpenStreetMap © OpenStreetMap contributors, Wikimapia.org, GeoNames 2015, refined by the producer.
Inset maps: JRC 2013, © EuroGeographics, Natural Earth 2012, CCM River DB © EUJRC2007, GeoNames 2013.

Population data: GHS Population Grid © European Commission, 2015 http://data.europa.eu/89h/jrc-ghs-pop_gpw4_globe_r2015a
Digital Elevation Model: EU-DEM (25 m)

Disclaimer

Products elaborated in this Copernicus EMS Rapid Mapping activity are realized to the best of our ability, within a very short time frame, optimising the available data and information. All geographic information has limitations due to scale, resolution, date and interpretation of the original sources. The map and the information content are derived from satellite data without in situ validation. No liability concerning the contents or the use thereof is assumed by the producer and by the European Union. Please be aware that the thematic accuracy might be lower in urban and forested areas due to inherent limitations of the SAR analysis technique.
Map produced by e-GEOS © released by e-GEOS.

For the latest version of this map and related products visit <http://emergency.copernicus.eu/EMSR9284>

jrc-ems-rapidmapping@ec.europa.eu
© European Union
For full Copyright notice visit <http://emergency.copernicus.eu/mapping/ems/cite-copernicus-ems-mapping-portal>

Relevant date records			
Event	17/05/2018	Situation as of	18/05/2018
Activation	15/05/2018	Map production	18/05/2018