

**Carita Beach - INDONESIA**  
**TSUNAMI- Situation as of 02/01/2019**  
Grading Map

**Cartographic Information**

1:10000

Full color ISO A1, medium resolution (200 dpi)

0 0.2 0.4 0.8 km

Grid: WGS 1984 UTM Zone 48S map coordinate system  
Tick marks: WGS 84 geographical coordinate system



**Legend**

**Built Up Grading**

- Destroyed
- Damaged
- Possibly damaged

**Crisis Information**

- Flood trace

**General Information**

- Area of Interest
- Image Footprint
- Not Analysed
- Not Analysed - No data

**Placenames**

- Placename

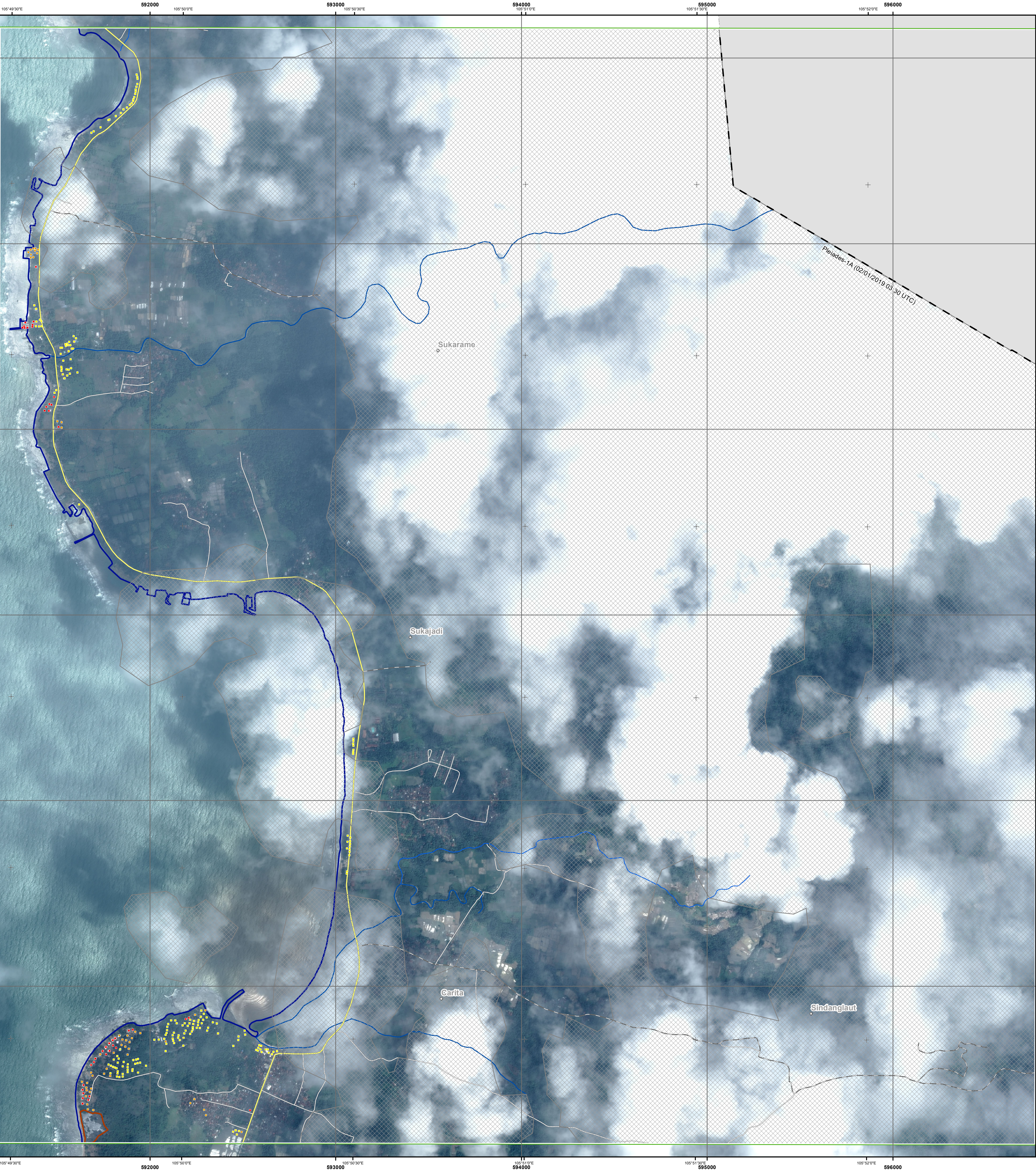
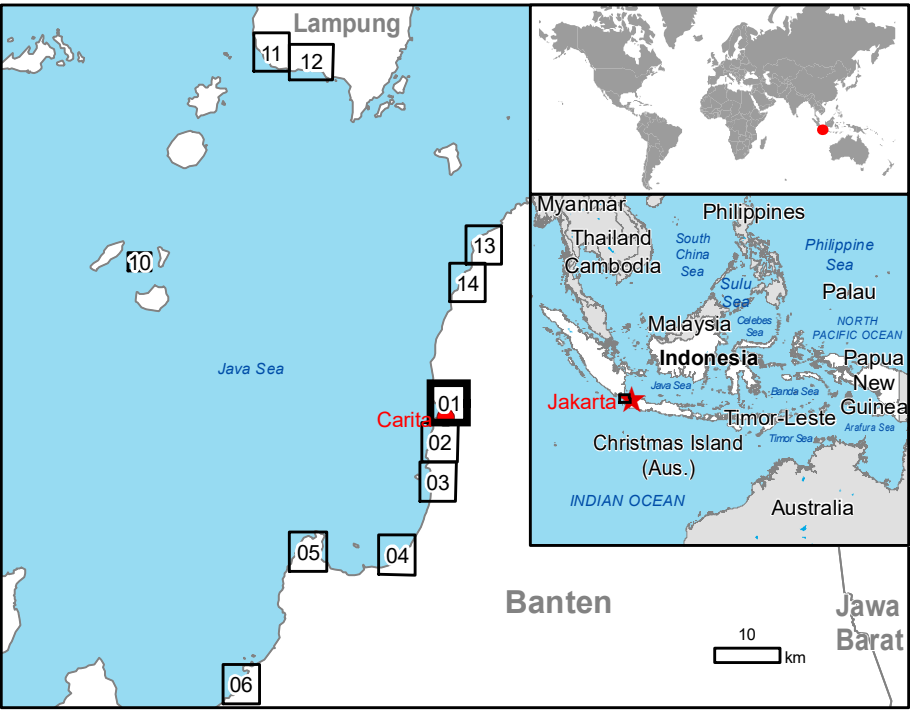
**Hydrography**

- Coastline
- River
- Stream

**Transportation**

- Primary Road
- Local Road
- Cart Track

Consequences within the AOI						
	Unit of measurement	Destroyed	Damaged	Possibly damaged	Total affected	Total in AOI
Flood Trace	ha				1.7	
Estimated population	Number of inhabitants				495	8226
Settlements	Residential	No.	41	50	187	278
						N/A



**Map Information**

On 22 December at 21:27 (UTC+7), undersea landslides likely caused by the Krakatoa volcano eruption triggered a tsunami which hit the coastal areas around Sunda Strait between Java and Sumatra islands of Indonesia. The most affected areas include Carita Beach in Banten Province, as well as districts of Pedonglang, South Lampung and Serang.

As of 29 December, Indonesia's disaster management agency and International media reported 426 fatalities, 7202 injured, 23 missing and 40386 displaced. 1296 houses, 78 hotels and villas and 434 boats are reported damaged. In addition, many vehicles were destroyed, and the highway between Serang and Pedonglang was cut off.

The present map shows the damage grade assessment (Grading maps) in the area of Carita Beach (Indonesia). The thematic layer has been derived from post-event satellite image by means of visual interpretation. The estimated geometric accuracy is 5 m CE90 or better, from native positional accuracy of the background satellite image.

**Data Sources**

Pre-event image: WorldView-2 © DigitalGlobe Digital Globe, Inc. (2017), (acquired on 27/03/2017 at 03:19 UTC, GSD 0.5 m, approx. 5 % cloud coverage in AOI, 21.1° off-nadir angle), provided under COPERNICUS by the European Union, ESA and European Space Imaging, all rights reserved.

Post-event image: "Pelades-1A" © CNES (2019), distributed by Airbus DS (acquired on 02/01/2019 at 03:30 UTC, GSD 0.5 m, approx. 70% cloud coverage in AOI, 17.5° off-nadir angle), provided by International Charter (call ID 683), all rights reserved.

Base vector layers: OpenStreetMap © OpenStreetMap contributors, Wikimapia.org, GeoNames 2015, refined by the producer.  
Inset maps: JRC 2013, Natural Earth 2012, GeoNames 2013.

Population data: GHs Population Grid © European Commission, 2015  
http://data.europa.eu/89h/jrc-ghs-pop\_gpw4\_globe\_r2015a.  
Digital Elevation Model: SRTM (90m)



**Disclaimer**

Products elaborated in this Copernicus EMS Rapid Mapping activity are realized to the best of our ability, within a very short time frame, optimising the available data and information. All geographic information has limitations due to scale, resolution, date and interpretation of the original sources. No liability concerning the contents or the use thereof is assumed by the producer and by the European Union.

Map produced by e-GEOS released by SERTIT (ODO).

For the latest version of this map and related products visit  
http://emergency.copernicus.eu/EMSR335

jrc-ems-rapidmapping@ec.europa.eu  
© European Union  
For full Copyright notice visit http://emergency.copernicus.eu/mapping/ems/cite-copernicus-ems-mapping-portal

**Relevant date records**

Event	22/12/2018	Situation as of	02/01/2019
Activation	23/12/2018	Map production	04/01/2019

