

Mucojo - MOZAMBIQUE

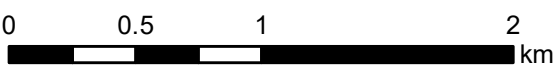
Storm - Situation as of 06/05/2019

Grading - Overview map 01

Cartographic Information

1:30000

Full color A1, 200 dpi resolution



Grid: WGS 1984 UTM Zone 37S map coordinate system
Tick marks: WGS 84 geographical coordinate system



Crisis Information

- Flooded Area (06/05/2019 07:35 UTC)
- Previous Flooded Area (01/05/2019 07:23 UTC)
- Flood trace

General Information

- Area of Interest
- Detail map

Sensor Metadata

- Not Analysed

Placenames

- Placename

Hydrography

- Coastline
- Stream
- Lake

Transportation

- Bridge and elevated highway
- Primary Road
- Secondary Road
- Local Road
- Cart Track

Grading Layers

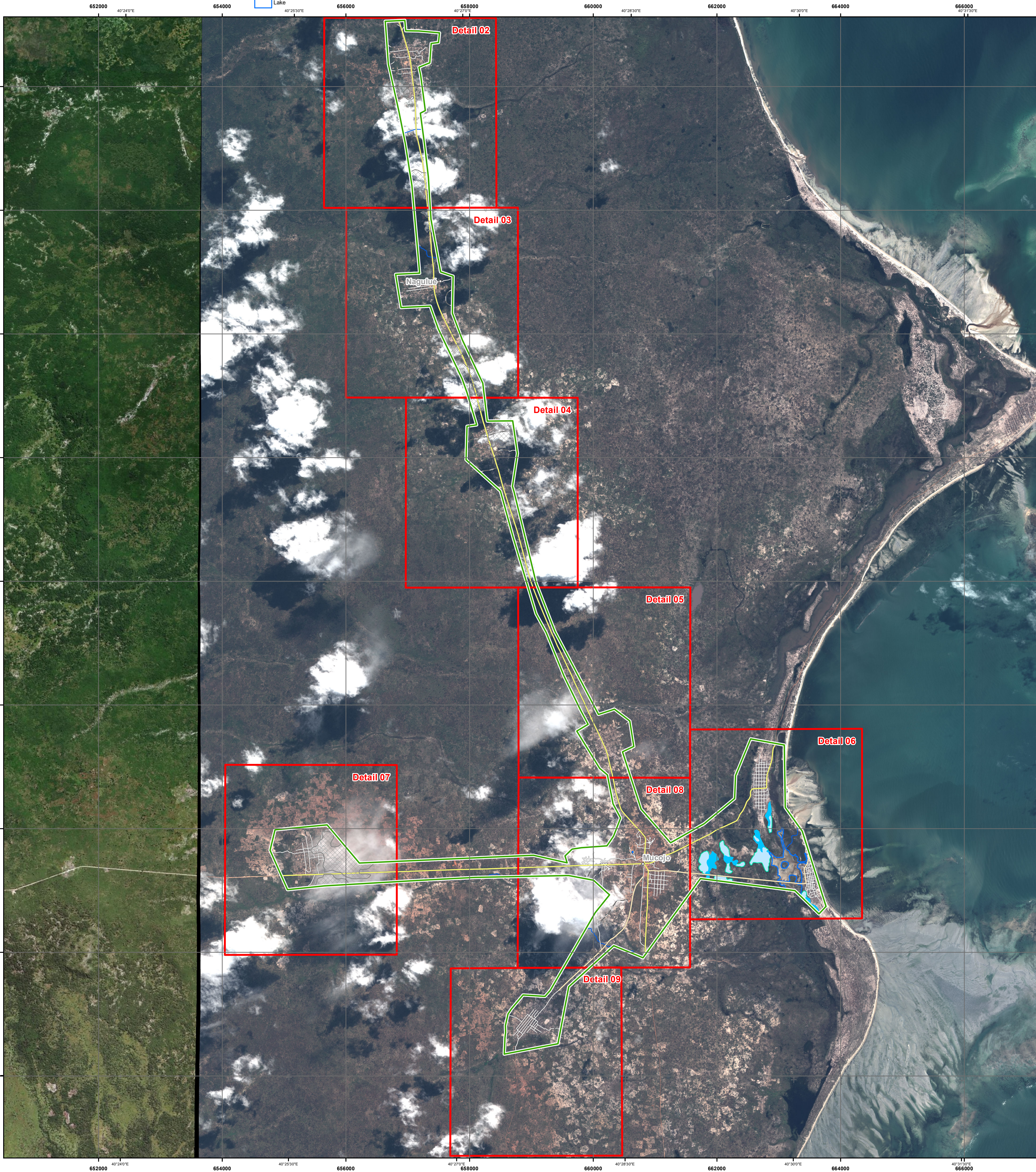
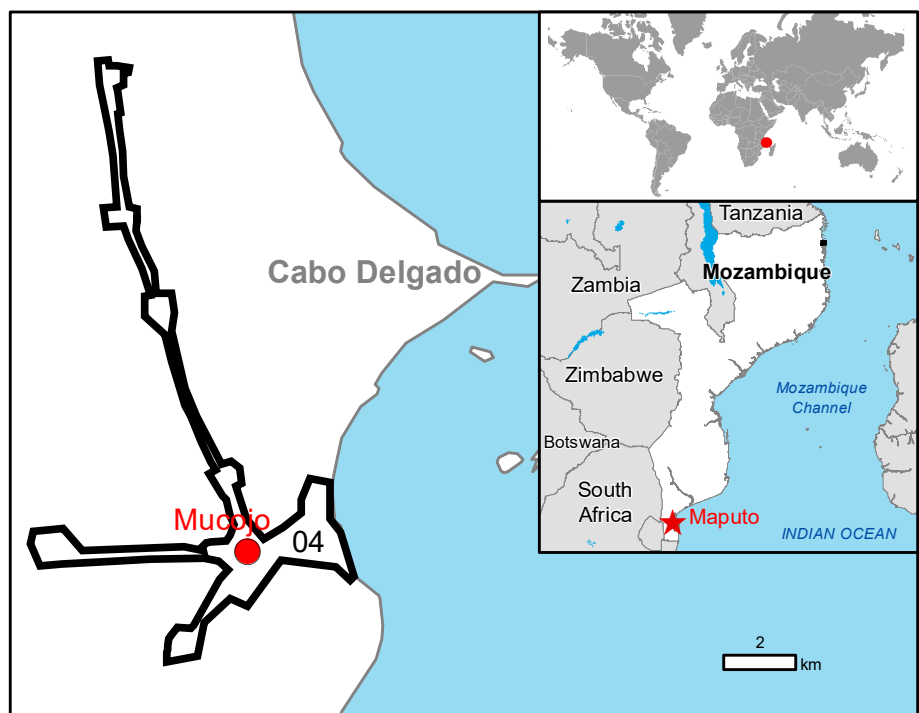
are included in the detail maps and in the vector package

Physiography & Land use - Land Cover

Features available in vector data

Legend

Consequences within the AOI						
	Unit of measurement	Destroyed	Damaged	Possibly damaged	Total affected	Total in AOI
Flooded area	ha				NA	4849
Estimated population					5020	NA
Settlements	Number of inhabitants				2	NA
Residential	No.	4765	255	0	5020	NA
Office	No.	0	2	0	2	NA
Hotel and similar	No.	0	28	0	28	NA
Industrial	No.	2	2	0	4	NA
Transportation						
Bridge and elevated highway	No.	0	0	0	0	1
Primary Road	km	1.0	1.2	4.6	6.8	26.1
Secondary Road	km	0.5	1.1	2.8	4.4	5.4
Local Road	km	21.3	1.7	0.0	23.0	34.7
Car Track	km	0.0	0.4	0.0	0.4	7.4



Map Information

Tropical Cyclone (TC) Kenneth hit Mozambique on 26.04.2019. TC Kenneth likely to bring a period of destructive winds to the Northern provinces of Mozambique on 26.04.2019 onwards. TC Kenneth also likely to bring a period of a few days of torrential rainfall with 350-500 mm likely widely, perhaps as much as 800 mm.

The present map shows the damage grade assessment in the area of Mucojo (Mozambique). The thematic layer has been derived from two post-event images by means of visual interpretation. With respect to cloud cover, an area is classified as "Not analysed" where clouds are present in both post-event images, otherwise areas are analysed. The background image is from 06/05/2019. The estimated geometric accuracy (RMSE) is 1.25 m or better, from native positional accuracy of the background satellite image.

Data sources

Pre-event image: WorldView-3 © DigitalGlobe Digital Globe, Inc. (2017), (acquired on 22/08/2017 and 28/08/2017 at 08:01 UTC and 07:56 UTC, GSD 0.5 m, approx. 0% cloud coverage in AoI), provided under COPERNICUS by the European Union, ESA and European Space Imaging, all rights reserved. Post-event image: Pleiades-1A/B © CNES (2019), distributed by Airbus DS (acquired on 01/05/2019 at 07:23 UTC, GSD 0.5 m, approx. 40 % cloud coverage in AoI, 35.2° off-nadir angle), provided under COPERNICUS by the European Union and ESA, all rights reserved.

Pleiades-1A/B © CNES (2019), distributed by Airbus DS (acquired on 06/05/2019 at 07:35 UTC, GSD 0.5 m, approx. 25 % cloud coverage in AoI, 13.2° off-nadir angle), provided under COPERNICUS by the European Union and ESA, all rights reserved.

Base vector layers: OpenStreetMap © OpenStreetMap contributors, Wikimapia.org, GeoNames 2015, Global Administrative Areas (2012), refined by the producer.

Inset maps: JRC 2013, Natural Earth 2012, GeoNames 2013.

Population data: GHS Population Grid © European Commission, 2015 http://data.europa.eu/89h/jrc-ghs-pop_gpw4_globe_r2015a.

Digital Elevation Model: SRTM (90 m) (NASA/USGS)

Disclaimer

Products elaborated in this Copernicus EMS Rapid Mapping activity are realized to the best of our ability, within a very short time frame, optimising the available data and information. All geographic information has limitations due to scale, resolution, date and interpretation of the original sources. No liability concerning the contents or the use thereof is assumed by the producer and by the European Union.

Delivery formats are Layered Geospatial PDF, GeoJPEG and vector (ESRI shapefiles, Google Earth KML, GeoJSON).

Map produced by e-GEOS released by e-GEOS (ODO).

For the latest version of this map and related products visit <http://emergency.copernicus.eu/EMSR354>

jrc-ems-rapidmapping@ec.europa.eu
European Union
For full Copyright notice visit <http://emergency.copernicus.eu/mapping/ems/cite-copernicus-ems-mapping-portal>

Relevant date records (UTC)

Event	26/04/2019 01:00	Situation as of	06/05/2019 07:35
Activation	26/04/2019 03:00	Map production	06/05/2019