

Macomia - MOZAMBIQUE

Storm - Situation as of 01/05/2019

Grading - Overview map 01

Cartographic Information

1:46000

Full color A1, 200 dpi resolution

0 0.75 1.5 3 km

Grid: WGS 1984 UTM Zone 37S map coordinate system
Tick marks: WGS 84 geographical coordinate system



Crisis Information

- Flooded Area (01/05/2019 07:23)
- Flood trace
- Landslide

Transportation Grading

- Bridge, elevated highway, tunnel and subway, Damaged
- Bridge, elevated highway, tunnel and subway, Possibly damaged
- Road, Damaged
- Road, Possibly damaged

General Information

- Area of Interest
- Detail map
- Sensor Metadata
- Not Analysed
- Placenames
 - Placename
- Hydrography
 - River

Transportation

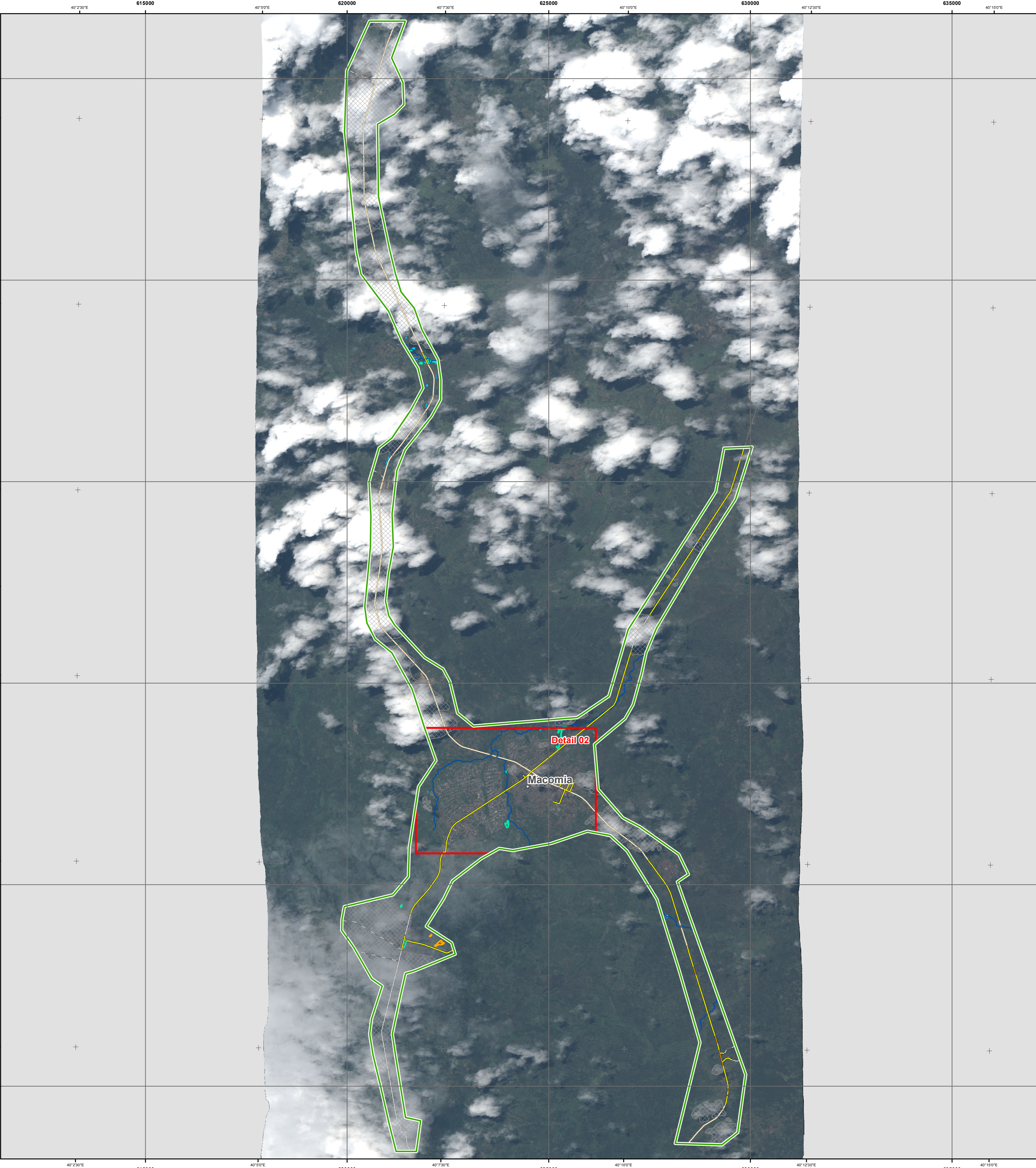
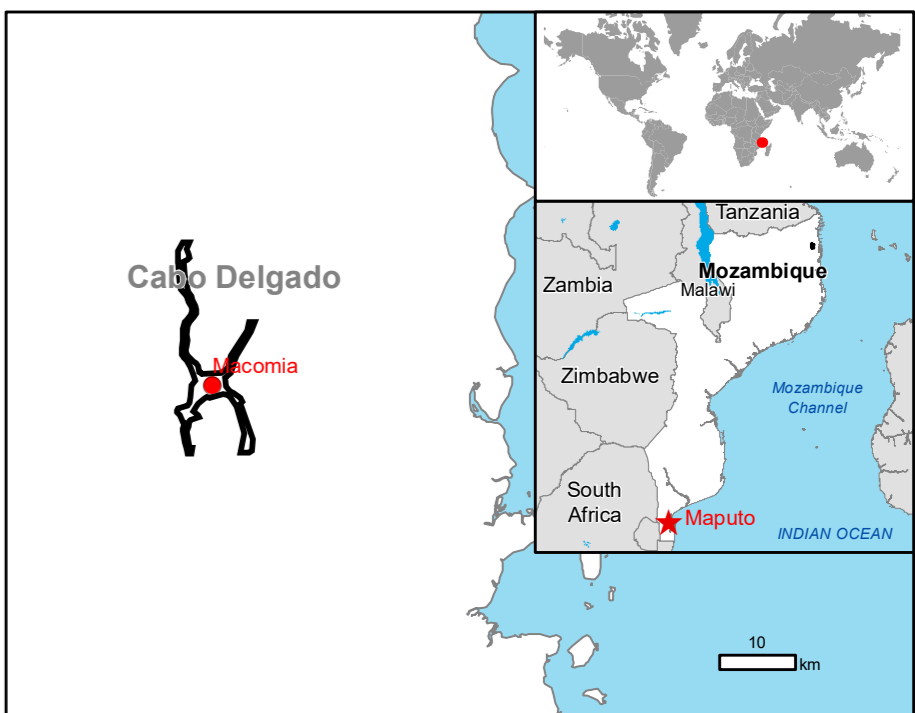
- Secondary Road
- Local Road
- Cart Track
- Bridge and elevated highway

Physiography & Land use - Land Cover
Features available in vector data

Grading Layers
are included in the detail map and in the vector package

Legend

| Consequences within the AOI | | Unit of measurement | | | | | Total in AOI | |
|-----------------------------|-----------------------------|---------------------|---------|------------------|----------------|------|--------------|--|
| | | Destroyed | Damaged | Possibly damaged | Total affected | | | |
| Flooded area | ha | NA | NA | NA | 6.2 | | 3.0 | |
| Flood trace | ha | NA | NA | NA | 1.0 | | NA | |
| Landslide | ha | NA | NA | NA | NA | | NA | |
| Estimated population | Number of inhabitants | NA | NA | NA | NA | | 23364 | |
| Settlements | Residential | No. | 1058 | 1220 | 63 | 2341 | NA | |
| Transportation | Bridge and elevated highway | km | 0.0 | 1.1 | 3.4 | 4.5 | 7.7 | |
| | Secondary road | km | 0.0 | 0.9 | 5.3 | 6.2 | 32.9 | |
| | Local road | km | 0.0 | 0.0 | 13.8 | 13.8 | 21.0 | |
| | Cart track | km | 0.0 | 0.0 | 3.0 | 3.0 | 7.2 | |



Map Information

Tropical Cyclone (TC) Kenneth hit Mozambique on 26.04.2019. TC Kenneth likely to bring a period of destructive winds to the Northern provinces of Mozambique on 26.04.2019 onwards. TC Kenneth also likely to bring a period of a few days of torrential rainfall with 350- 500 mm likely widely, perhaps as much as 800 mm.

The present map shows the damage grade assessment in the area of Macomia (Mozambique). The thematic layer has been derived from post-event satellite image by means of visual interpretation. The estimated geometric accuracy (RMSE) is 5 m or better, from native positional accuracy of the background satellite image.

Data sources

Pre-event image: WorldView-3 © Digital Globe, Inc. (2017), (acquired on 09/07/2017 at 07:55 UTC, GSD 0.5 m, approx. 5% cloud coverage in AOI, 32.4° off-nadir angle), provided under COPERNICUS by the European Union, ESA and European Space Imaging, all rights reserved.
Post-event image: Pleiades-1A/B © CNES (2019), distributed by Airbus DS (acquired on 01/05/2019 at 07:23 UTC, GSD 0.5 m, approx. 35% cloud coverage in AOI, 34.8° off-nadir angle), provided under COPERNICUS by the European Union and ESA, all rights reserved.

Base vector layers: OpenStreetMap © OpenStreetMap contributors, Wikimapia.org, GeoNames 2015, Global Administrative Areas (2012), refined by the producer.
Inset maps: JRC 2013, Natural Earth 2012, GeoNames 2013.

Population data: GHS Population Grid © European Commission, 2015 http://data.europa.eu/89h/jrc-ghsl-ghs_pop_gpw4_globe_r2015a.
Digital Elevation Model: SRTM (30 m) (NASA/USGS)

Disclaimer

Products elaborated in this Copernicus EMS Rapid Mapping activity are realized to the best of our ability, within a very short time frame, optimising the available data and information. All geographic information has limitations due to scale, resolution, date and interpretation of the original sources. No liability concerning the contents or the use thereof is assumed by the producer and by the European Union.

Delivery formats are Layered Geospatial PDF, GeoJPEG and vector (ESRI shapefiles, Google Earth KML, GeoJSON).

Map produced by GAF AG released by SERTIT (ODO).

For the latest version of this map and related products visit <http://emergency.copernicus.eu/EMSR354>

jrc-ems-rapidmapping@ec.europa.eu
© European Union
For full Copyright notice visit <http://emergency.copernicus.eu/mapping/ems/cite-copernicus-ems-mapping-portal>

Relevant date records (UTC)

| | | | |
|------------|------------------|-----------------|------------------|
| Event | 26/04/2019 01:00 | Situation as of | 01/05/2019 07:23 |
| Activation | 26/04/2019 14:18 | Map production | 02/05/2019 |