

Foque South - MOZAMBIQUE

Storm - Situation as of 06/05/2019

Grading - Overview map 01

Cartographic Information

1:2500

Full color A1, 200 dpi resolution

0 100 200 Meters

Grid: WGS 1984 UTM Zone 37S map coordinate system
Tick marks: WGS 84 geographical coordinate system

Crisis Information

Flooded Area
(06/05/2019 07:35 UTC)
Previous Flooded Area
(01/05/2019 07:23 UTC)
Flood trace

Built Up Grading

Destroyed
Damaged
Possibly damaged

Transportation Grading

Road, Damaged

General Information

Area of Interest

Sensor Metadata

Not Analysed

Transportation

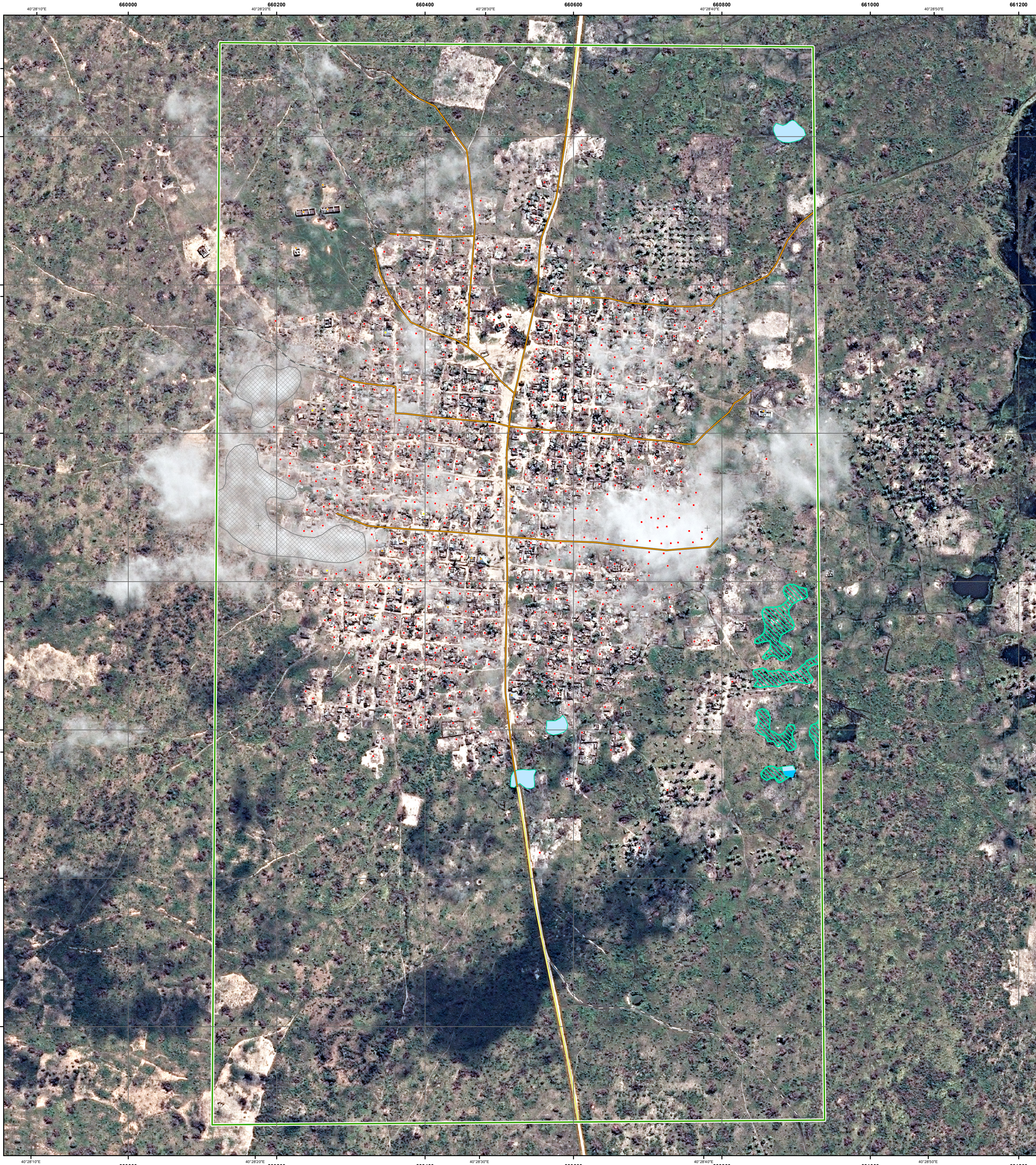
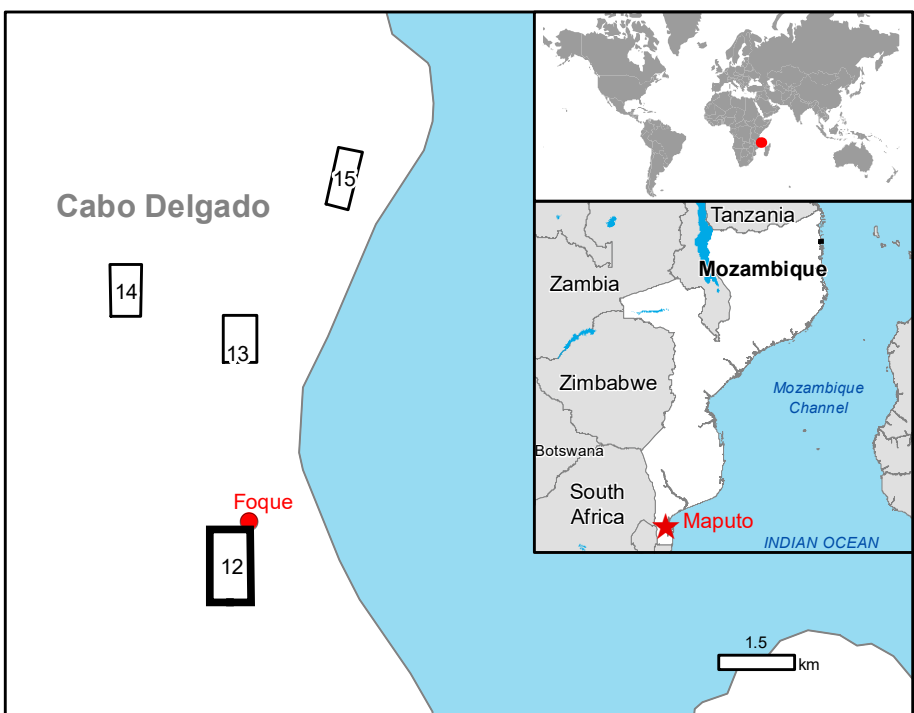
Primary Road

Cart Track

Physiography & Land use - Land Cover

Features available in vector data

Consequences within the AOI						
	Unit of measurement	Destroyed	Damaged	Possibly damaged	Total affected	Total in AOI
Flooded area	ha				0.01	
Flood trace	ha				0.8	
Estimated population	Number of inhabitants				NA	2640
Settlements	Residential	No. 774	13	5	792	NA
	School, university and research	No. 0	1	0	1	NA
	Reservoirs, silos and warehouses	No. 0	2	0	2	NA
	Non-residential farm	No. 2	0	0	2	NA
Transportation	Primary Road	km 0.0	0.9	0.0	0.9	1.5
	Cart Track	km 0.0	2.4	0.0	2.4	3.5



Map Information

Tropical Cyclone (TC) Kenneth hit Mozambique on 26.04.2019. TC Kenneth likely to bring a period of destructive winds to the Northern provinces of Mozambique on 26.04.2019 onwards. TC Kenneth also likely to bring a period of a few days of torrential rainfall with 350-500 mm likely widely, perhaps as much as 800 mm.

The present map shows the damage grade assessment in the area of Foque South (Mozambique). The thematic layer has been derived from post-event satellite image by means of visual interpretation. The estimated geometric accuracy (RMSE) is 1.25 m or better, from native positional accuracy of the background satellite image.

Data sources

Pre-event image: WorldView-3 © Digital Globe, Inc. (2017), (acquired on 22/08/2017 at 08:01 UTC, GSD 0.5 m, approx. 0% cloud coverage in AOI, 25.0° off-nadir angle), provided under COPENICUS by the European Union, ESA and European Space Imaging, all rights reserved.

Post-event image: Pleiades-1A/B © CNES (2019), distributed by Airbus DS (acquired on 01/05/2019 at 07:23 UTC, GSD 0.5 m, approx. 15% cloud coverage in AOI, 35.2° off-nadir angle), provided under COPENICUS by the European Union and ESA, all rights reserved.

Pleiades-1A/B © CNES (2019), distributed by Airbus DS (acquired on 06/05/2019 at 07:35 UTC, GSD 0.5 m, approx. 10% cloud coverage in AOI, 13.2° off-nadir angle), provided under COPENICUS by the European Union and ESA, all rights reserved.

Base vector layers: OpenStreetMap © OpenStreetMap contributors, Wikimapia.org, GeoNames 2015, Global Administrative Areas (2012), refined by the producer.

Inset maps: JRC 2013, Natural Earth 2012, GeoNames 2013.

Population data: GHS Population Grid © European Commission, 2015
http://data.europa.eu/89h/jrc-ghs-pop_gpw4_globe_r2015a
Digital Elevation Model: SRTM (30 m) (NASA/USGS)

Disclaimer

Products elaborated in this Copernicus EMS Rapid Mapping activity are realized to the best of our ability, within a very short time frame, optimising the available data and information. All geographic information has limitations due to scale, resolution, date and interpretation of the original sources. No liability concerning the contents or the use thereof is assumed by the producer and by the European Union.

Delivery formats are Layered Geospatial PDF, GeoJPEG and vector (ESRI shapefiles, Google Earth KML, GeoJSON).

Map produced by e-GEOS released by e-GEOS (ODO).

For the latest version of this map and related products visit
http://emergency.copernicus.eu/EMSR354

jrc-ems-rapidmapping@ec.europa.eu
© European Union
For full Copyright notice visit http://emergency.copernicus.eu/mapping/ems/cite-copernicus-ems-mapping-portal

Relevant date records (UTC)

Event	26/04/2019 01:00	Situation as of	06/05/2019 07:35
Activation	26/04/2019 14:18	Map production	06/05/2019