

## Foque - MOZAMBIQUE

### Storm - Situation as of 04/05/2019

#### Grading - Overview map 01

#### Cartographic Information

1:2000

Full color A1, 200 dpi resolution

0 75 150 Meters

Grid: WGS 1984 UTM Zone 37S map coordinate system  
Tick marks: WGS 84 geographical coordinate system

N

#### Built Up Grading

- Destroyed
- Damaged

#### Transportation Grading

- Road, Damaged

#### General Information

- Area of Interest

#### Sensor Metadata

- Not Analysed

#### Transportation

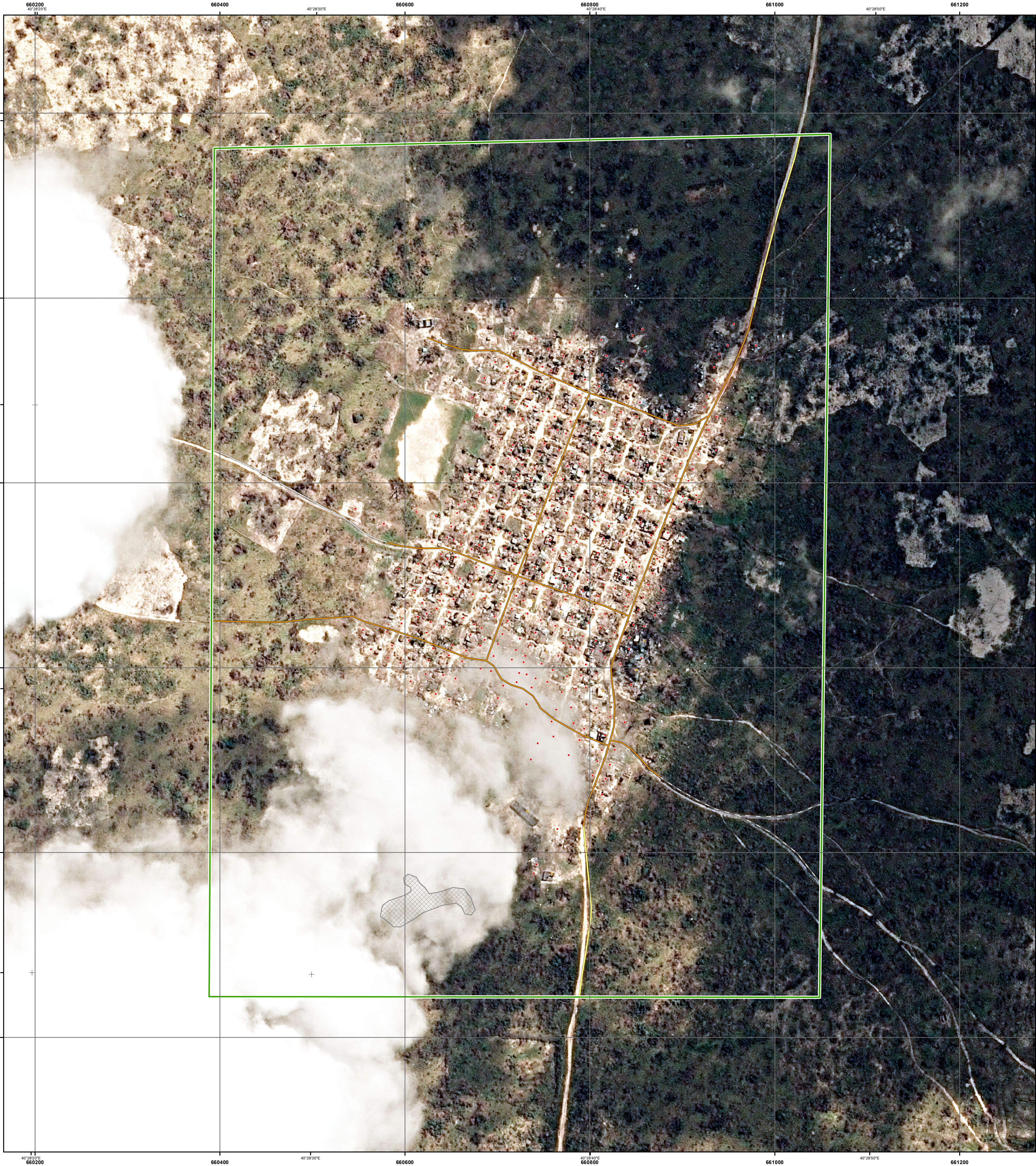
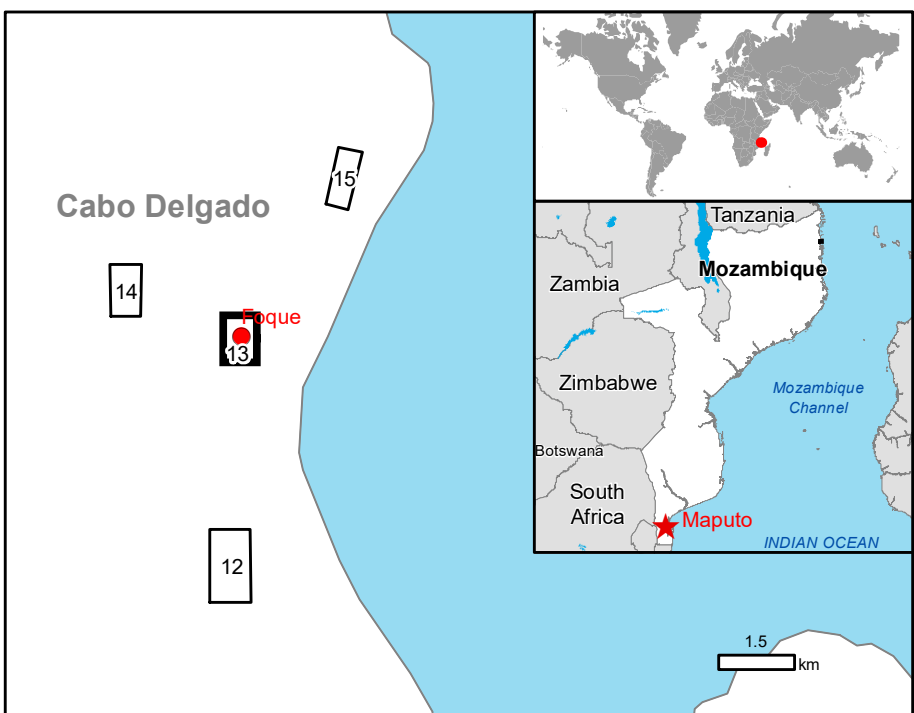
- Primary Road
- Local Road
- Cart Track

#### Physiography & Land use - Land Cover

Features available in vector data

#### Legend

Consequences within the AOI		Unit of measurement		Destroyed	Damaged	Possibly damaged	Total affected	Total in AOI
Estimated population		Number of inhabitants						NA
Settlements	Residential	No.	404	16	0	420	NA	1520
	School, university and research	No.	0	1	0	1	NA	
	Building used as place of worship and for religious activities	No.	0	1	0	1	NA	
Transportation	Primary Road	Km	0.0	0.6	0.0	0.6	1.0	
	Local Road	Km	0.0	1.1	0.0	1.1	1.3	
	Cart Track	km	0.0	0.4	0.0	0.4	0.7	



#### Map Information

Tropical Cyclone (TC) Kenneth hit Mozambique on 26.04.2019. TC Kenneth likely to bring a period of destructive winds to the Northern provinces of Mozambique on 26.04.2019 onwards. TC Kenneth also likely to bring a period of a few days of torrential rainfall with 350-500 mm likely widely, perhaps as much as 800 mm.

The present map shows the damage grade assessment in the area of Foque (Mozambique). The thematic layer has been derived from two post-event images by means of visual interpretation. With respect to cloud cover, an area is classified as "Not analysed" where clouds are present in both post-event images, otherwise areas are analysed. The background image is from 04/05/2019. The estimated geometric accuracy (RMSE) is 1.25 m or better, from native positional accuracy of the background satellite image.

#### Data sources

Pre-event image: WorldView-3 © Digital Globe, Inc. (2017), (acquired on 22/08/2017 at 08:01 UTC, GSD 0.5 m, approx. 0% cloud coverage in Aoi, 25.0° off-nadir angle), provided under COPERNICUS by the European Union, ESA and European Space Imaging, all rights reserved.  
Post-event image: Pleiades-1A/B © CNES (2019), distributed by Airbus DS (acquired on 04/05/2019 at 07:50 UTC, GSD 0.5 m, approx. 20% cloud coverage in Aoi, 19.0° off-nadir angle), provided under COPERNICUS by the European Union and ESA, all rights reserved.  
Pleiades-1A/B © CNES (2019), distributed by Airbus DS (acquired on 01/05/2019 at 07:23 UTC, GSD 0.5 m, approx. 25% cloud coverage in Aoi, 35.2° off-nadir angle), provided under COPERNICUS by the European Union and ESA, all rights reserved.

Base vector layers: OpenStreetMap © OpenStreetMap contributors, Wikimapia.org, GeoNames 2015, Global Administrative Areas (2012), refined by the producer.  
Inset maps: JRC 2013, Natural Earth 2012, GeoNames 2013.

Population data: GHS Population Grid © European Commission, 2015  
http://data.europa.eu/89h/jrc-ghs-pop\_gpw4\_globe\_r2015a  
Digital Elevation Model: SRTM (30 m) (NASA/USGS)

#### Disclaimer

Products elaborated in this Copernicus EMS Rapid Mapping activity are realized to the best of our ability, within a very short time frame, optimising the available data and information. All geographic information has limitations due to scale, resolution, date and interpretation of the original sources. No liability concerning the contents or the use thereof is assumed by the producer and by the European Union.

Delivery formats are Layered Geospatial PDF, GeoJPEG and vector (ESRI shapefiles, Google Earth KML, GeoJSON).

Map produced by e-GEOS released by e-GEOS (ODO).

For the latest version of this map and related products visit  
http://emergency.copernicus.eu/EMSR354

jrc-ems-rapidmapping@ec.europa.eu  
© European Union  
For full Copyright notice visit http://emergency.copernicus.eu/mapping/ems/cite-copernicus-ems-mapping-portal

#### Relevant date records (UTC)

Event	26/04/2019 01:00	Situation as of	04/05/2019 07:50
Activation	26/04/2019 14:18	Map production	04/05/2019