

Proença a Nova - PORTUGAL

Wildfire - Situation as of 22/07/2019

Delineation - Overview map 01

Cartographic Information

1:55000

Full color A1, 200 dpi resolution

0 1.25 2.5 5 km

Grid: WGS 1984 UTM Zone 29N map coordinate system  
Tick marks: WGS 84 geographical coordinate system

Crisis Information

Active Flames

Burnt Area (22/07/2019 11:46 UTC)

General Information

Area of Interest

Detail map

Sensor Metadata

Image Footprint

Placenames

Placename

Built-Up Area

Residential

Hydrography

River

Stream

Lake

Reservoir

River

Facilities

Dam

Construction for mining or extraction

Transportation

Highway

Primary Road

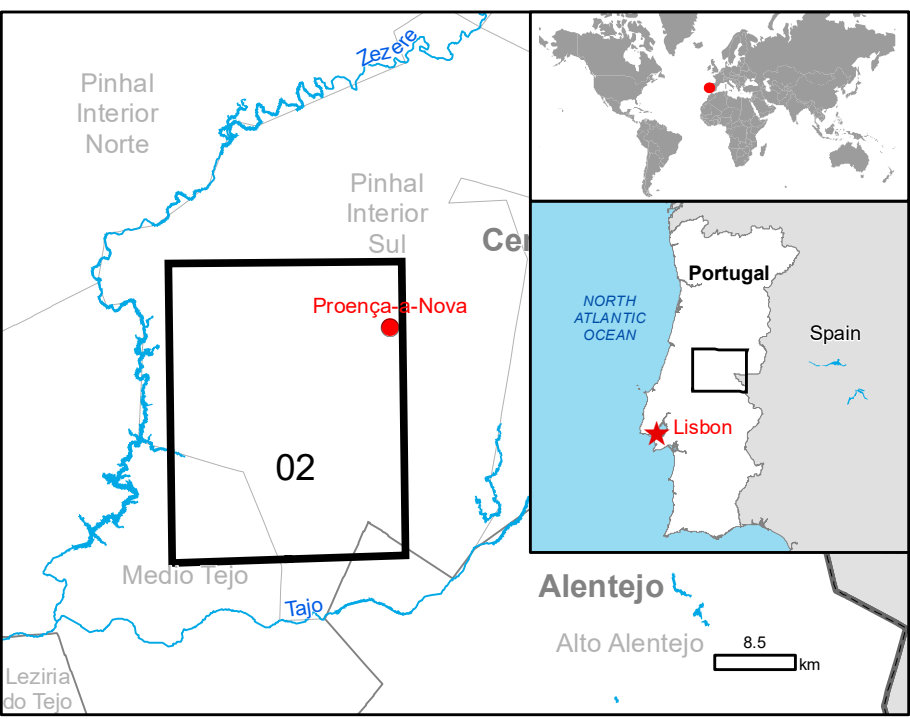
Secondary Road

Local Road

Cart Track

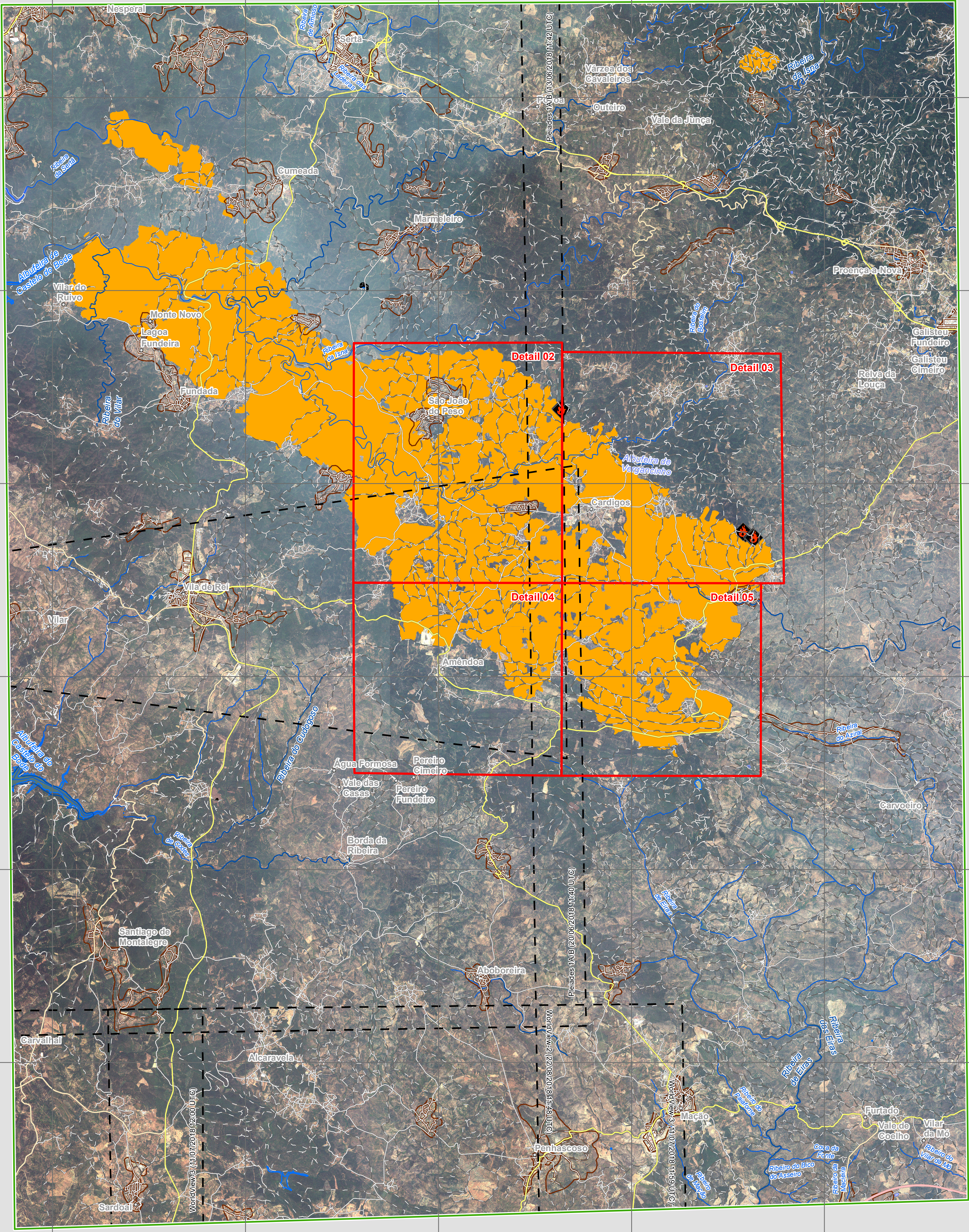
Airfield runway

Consequences within the AOI		Unit of measurement	Affected	Total in AOI
Burnt area		ha	6570.4	
Estimated population		Number of inhabitants	629	22574
Settlements	Residential	ha	67.5	2424.1
Transportation	Highways	km	0.0	5.8
	Primary Road	km	14.5	139.0
	Secondary Road	km	0.0	63.4
	Local Road	km	35.0	785.3
	Cart Track	km	258.8	2626.6
	Airfield runways	km	0.0	0.2
Facilities	Dam	No	0	11
	Construction for mining or extraction	ha	0.0	2.0
Land use	Arable land	ha	0.0	0.7
	Permanent crops	ha	0.0	1088.8
	Heterogeneous agricultural areas	ha	459.7	7326.6
	Forests	ha	1769.2	19348.0
	Shrub and/or herbaceous vegetation association	ha	6266.0	46921.1
	Open spaces with little or no vegetation	ha	75.4	2936.4



Land use - Land Cover

Features available in the vector package



Map Information

On 20 July 2019, three separate forest fires have broke out in the center of Portugal. According to Civil Protection Authorities, the fire endangers two villages in the region of Castelo Branco. Several firefighters' units have been deployed in the area.

The present map shows the fire delineation in the area of Proença a Nova (Portugal). The thematic layer has been derived from post-event satellite image by means of visual interpretation. The estimated geometric accuracy (RMSE) is 12.5 m or better, from native positional accuracy of the background satellite image.

Data sources

Pre-event image: WorldView-2 © Digital Globe, Inc. (2018), (acquired on 22/08/2018 at 11:48 UTC, GSD 2 m, approx. 0% cloud coverage in Aoi, 30.7° off-nadir angle), provided under COPERNICUS by the European Union, ESA and European Space Imaging, all rights reserved. Pléiades-1A/B © CNES (2018), distributed by Airbus DS (acquired on 13/06/2018 at 11:42 UTC, GSD 4 m, approx. 0% cloud coverage in Aoi, 26.2° off-nadir angle and acquired on 20/06/2018 at 11:40 UTC, GSD 4 m, approx. 0% cloud coverage in Aoi, 26.3° off-nadir angle), provided under COPERNICUS by the European Union and ESA, all rights reserved.

WorldView-3 © Digital Globe, Inc. (2018), (acquired on 11/07/2018 at 11:59 UTC, GSD 2 m, approx. 0% cloud coverage in Aoi, 19.1° off-nadir angle and acquired on 11/07/2018 at 12:00 UTC, GSD 2 m, approx. 0% cloud coverage in Aoi, 23.5° off-nadir angle), provided under COPERNICUS by the European Union, ESA and European Space Imaging, all rights reserved.

Post-event image: WorldView-3 © DigitalGlobe Digital Globe, Inc. (2019), (acquired on 22/07/2019 at 11:46 UTC, GSD 2 m, approx. 0% cloud coverage in Aoi, 30.2° off-nadir angle), provided under COPERNICUS by the European Union, ESA and European Space Imaging, all rights reserved.

Base vector layers: OpenStreetMap © OpenStreetMap contributors, Wikimapia.org, GeoNames 2015, Corine Land Cover (CLC) 2012, Global Administrative Areas (2012), refined by the producer.

Inset maps: JRC 2013, EuroBoundaryMap 2017 © EuroGeographics, Natural Earth 2012, CCM River DB © EUJRC2007, GeoNames 2013.

Disclaimer

Products elaborated in this Copernicus EMS Rapid Mapping activity are realized to the best of our ability, within a very short time frame, optimising the available data and information. All geographic information has limitations due to scale, resolution, date and interpretation of the original sources. No liability concerning the contents or the use thereof is assumed by the producer and by the European Union.

Delivery formats are Layered Geospatial PDF, GeoJPEG and vector (ESRI shapefiles, Google Earth KML, GeoJSON).

Map produced by GAF AG, released by e-GEOS (ODO).

For the latest version of this map and related products visit <http://emergency.copernicus.eu/EMSR372>

JRC-ems-rapidmapping@ec.europa.eu  
© European Union  
For full Copyright notice visit <http://emergency.copernicus.eu/mapping/ems-cite-copernicus-ems-mapping-portal>

Relevant date records (UTC)

Event	20/07/2019 22:00	Situation as of	22/07/2019 11:46
Activation	21/07/2019 02:00	Map production	22/07/2019

