

ROSCOMMON - IRELAND
Flood - Situation as of 26/02/2020
Delineation - Overview map 01

Cartographic Information

1:180000 Full color A1, 200 dpi resolution

0 3.75 7.5 15 km

Grid: WGS 1984 UTM Zone 29N map coordinate system
Tick marks: WGS 84 geographical coordinate system

Crisis Information

Flooded Area
(26/02/2020 06:47 UTC)

General Information

Area of Interest

Administrative boundaries

--- Region
--- Province
--- Municipality

Placenames

o Placename

Built-Up Area

Built-Up Area

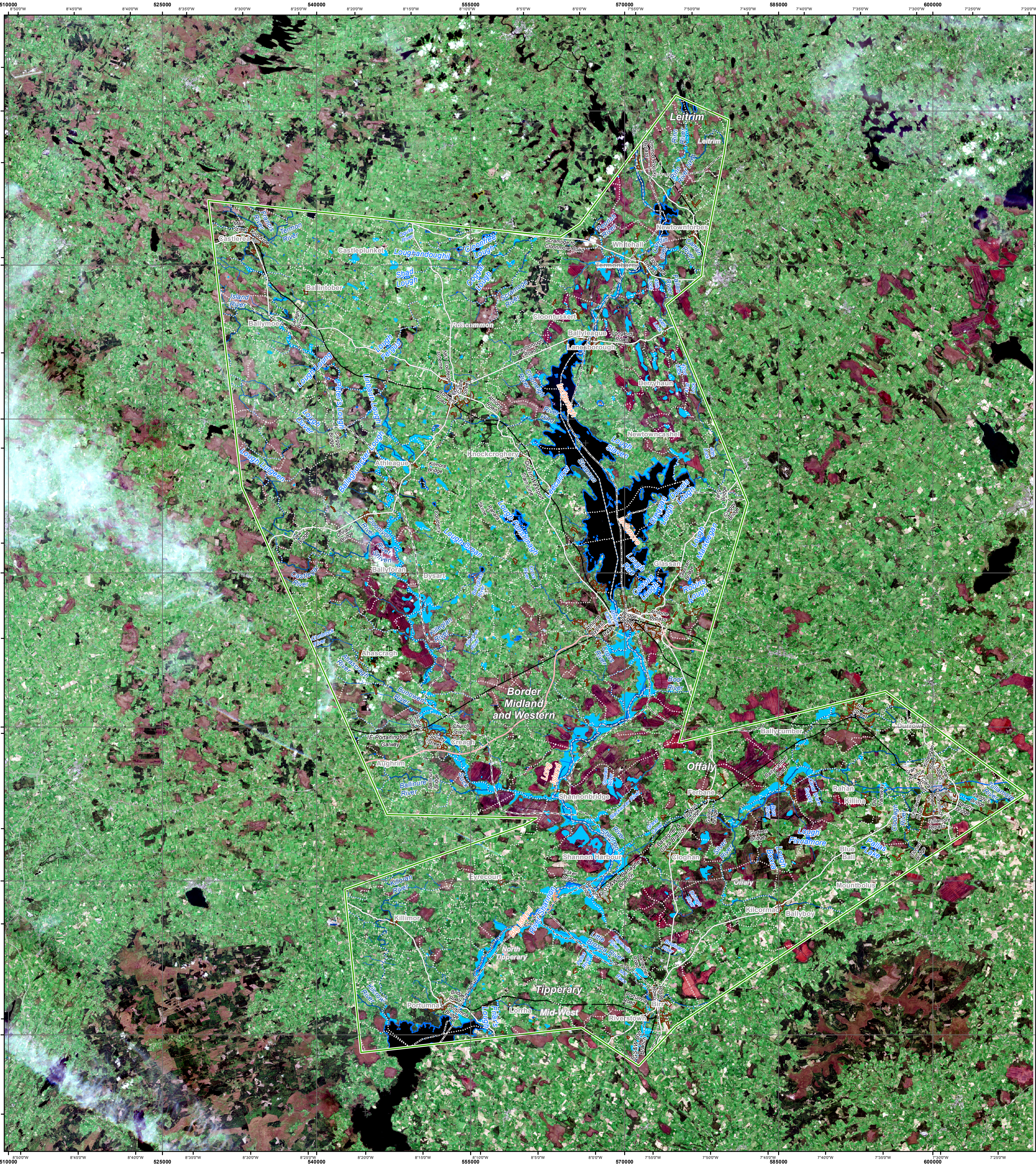
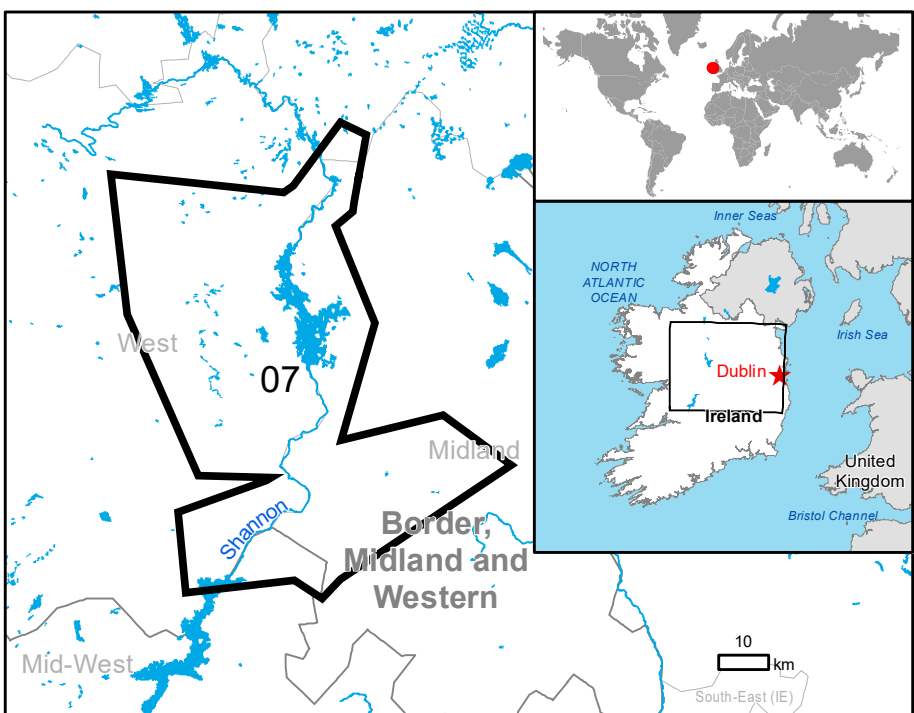
Hydrography

— River
— Stream
— Island
— Lake
— Reservoir
— River

Transportation

— Highway
— Primary Road
— Long-distance railway
— Airfield runway
— Helipad

Consequences within the AOI		Unit of measurement	Affected	Total in AOI
Flooded area		ha	18056.8	
Estimated population		Number of inhabitants	137674	
Settlements	Residential Buildings	ha	1.5	4844.6
Transportation	Helipad	ha	0.0	0.1
	Airfield runways	km	0.0	2.4
	Highways	km	0.0	83.2
	Primary Road	km	1.4	365.1
	Secondary Road	km	1.7	605.8
	Local Road	km	7.0	1205.1
	Cart Track	km	57.8	4054.3
Transportation	No Driveway	km	4.0	171.4
	Long-distance railways	km	3.6	254.1



Map Information

The Clare county was one of the worst affected areas during the flooding periods in 2015 and 2009. Since 20 February Ireland has been experiencing a series of Atlantic storms. Water levels along the River Shannon and River Fergus have risen after another night of heavy rain on 24 February. National authorities have issued a flood warning for the counties along the River Shannon and Rivers Fergus and Claunren. A number of houses in Co Clare village have been evacuated. A yellow snow and ice warning has been issued for the next days (until 26 February).

The present map shows the flood delineation in the area of Roscommon (Ireland). The thematic layer has been derived from post-event satellite image using a semi-automatic approach. "Not analysed" indicates an area that could not be analysed in any of the post-event images. The estimated geometric accuracy (RMSE) is 2.5 m or better, from native positional accuracy of the background satellite image.

Data sources

Pre-event image: Sentinel-2A/B (2019) (acquired on 18/09/2019 at 11:43 UTC, GSD 10.0 m, approx. 0% cloud coverage in AOI) provided under COPERNICUS by the European Union and ESA.
Post-event image: Sentinel-1A/B (2020) (acquired on 26/02/2020 at 06:47 UTC, GSD 10.0 m, approx. 0% cloud coverage in AOI) provided under COPERNICUS by the European Union and ESA, all rights reserved.

Base vector layers: OpenStreetMap © OpenStreetMap contributors, Wikimapia.org, GeoNames 2015, Corine Land Cover (CLC) 2012, Globe Land 30 (2010), Global Administrative Areas (2012), refined by the producer.
Inset maps: JRC 2013, EuroBoundaryMap 2017 © EuroGeographics, Natural Earth 2012, CCM River DB © EUJRC2007, GeoNames 2013.

Population data: GHS Population Grid © European Commission, 2019
https://ghsl.jrc.ec.europa.eu/ghs_pop2019.php
Digital Elevation Model: SRTM (30 m) (NASA/USGS)

Disclaimer

Products elaborated in this Copernicus EMS Rapid Mapping activity are realized to the best of our ability, within a very short time frame, optimising the available data and information. All geographic information has limitations due to scale, resolution, date and interpretation of the original sources. No liability concerning the contents or the use thereof is assumed by the producer and by the European Union. Please be aware that the thematic accuracy might be lower in urban and forested areas due to inherent limitations of the SAR analysis technique.

Delivery formats are Layered Geospatial PDF, GeoJPEG and vector (ESRI shapefiles, Google Earth KML, GeoJSON).

Map produced by e-GEOS released by e-GEOS (ODO).

For the latest version of this map and related products visit
https://emergency.copernicus.eu/EMSR429

jrc-ems-rapidmapping@ec.europa.eu
© European Union
For full Copyright notice visit https://emergency.copernicus.eu/mapping/ems-cite-copernicus-ems-mapping-portal

Relevant date records (UTC)

Event	20/02/2020 17:00	Situation as of	26/02/2020 06:47
Activation	24/02/2020 18:56	Map production	27/02/2020