

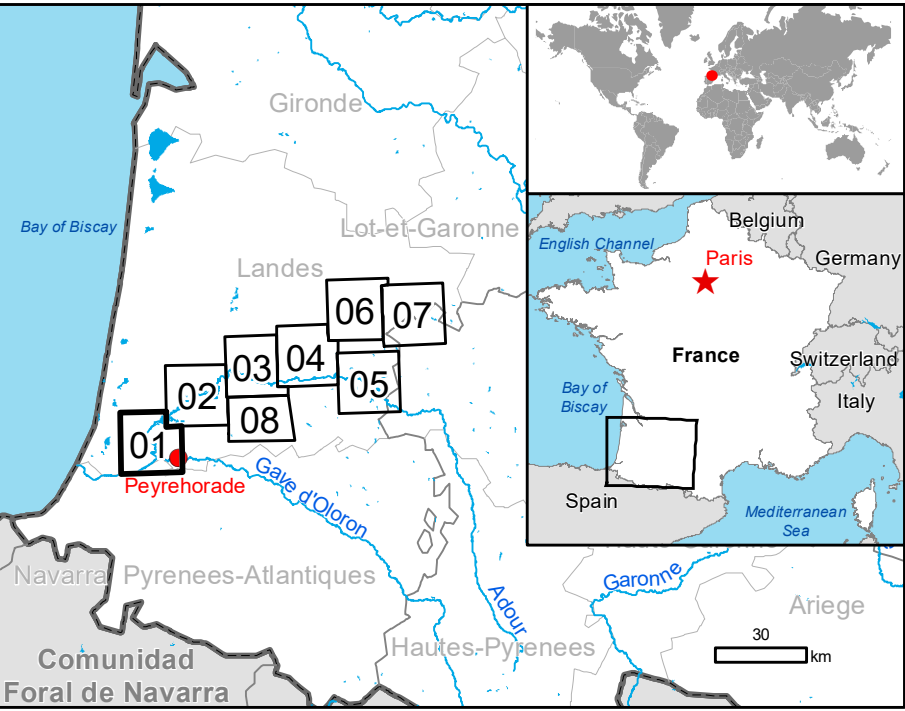
GLIDE number: N/A
Int. Charter call ID: N/A

Activation ID: EMSR437
Product N: 01PEYREHORADE, V1

Peyrehorade - FRANCE

Flood - Situation as of 12/05/2020

Delineation - Overview map 01



Cartographic Information

1:38000 Full color A1, 200 dpi resolution

0 0.75 1.5 3 km

Grid: WGS 1984 UTM Zone 30N map coordinate system
Tick marks: WGS 84 geographical coordinate system

Legend

Crisis Information	Built-Up Area	Transportation
Flooded Area (12/05/2020 05:59 UTC)	Built-Up Area	Highway
Area of Interest	River	Primary Road
Administrative boundaries	Stream	Secondary Road
Municipality	Island	Local Road
Placenames	Lake	Long-distance railway
	Reservoir	Airfield runway
	River	Land Use - Land Cover
		Features available in the vector package

Consequences within the AOI		Unit of measurement	Affected	Total in AOI
Flooded area		km	581	33728
Estimated population		Number of inhabitants		
Settlements	Residential Buildings	km	0.3	NA
	Industrial buildings	km	0.0	NA
	Sports fields	km	0.0	NA
Transportation	Airfield runways	km	0.0	NA
	Highways	km	0.0	NA
	Primary Road	km	1.0	NA
	Secondary Road	km	0.2	NA
	Local Road	km	0.1	NA
	Long-distance railways	km	0.1	NA
Land use	Arable land	km	479.9	NA
	Pastures	km	51.4	NA
	Heterogeneous agricultural areas	km	22.0	NA
	Forests	km	26.3	NA
	Shrub and/or herbaceous vegetation association	km	1.1	NA
	Inland wetlands	km	0.0	NA
	Other	km	0.3	NA

Map Information

There was heavy rain in the southwest of France late on 10 May. These precipitations led to floods on many river basins. Red and orange flood warnings have been issued for the affected region by the National Center of Central Forecasts.

The present map shows the flood in the area of Peyrehorade (France). The thematic layer has been derived from post-event satellite image using a semi-automatic approach. The estimated geometric accuracy (RMSE) is 12.5 m or better, from native positional accuracy of the background satellite image.

Relevant date records (UTC)

Event	10/05/2020 22:00	Situation as of	12/05/2020 05:59
Activation	10/05/2020 19:35	Map production	12/05/2020

Data sources

Pre-event image: Sentinel-2A (2020) (acquired on 03/04/2020 at 10:56 UTC, GSD 10 m, approx. 0% cloud coverage in AOI) provided under COPERNICUS by the European Union and ESA.

Post-event image: COSMO-SkyMed © ASI (2020), distributed by e-GEOS S.p.A. (acquired on 12/05/2020 at 05:59 UTC, GSD 30.0 m), provided under COPERNICUS by the European Union and ESA, all rights reserved.

Base vector layers: OpenStreetMap © OpenStreetMap contributors, Wikimedia.org, GeoNames 2015, Corine Land Cover (CLC) 2012, Global Administrative Areas (2012), refined by the producer.
Inset maps: JRC 2013, EuroBoundaryMap 2017 © EuroGeographics, Natural Earth 2012, CC0 River DB © EUJRC2007, GeoNames 2013.

Population data: GHs Population Grid © European Commission, 2019
https://ghsl.jrc.ec.europa.eu/ghs_pop2019.php
Digital Elevation Model: EU-DEM (25 m)

Disclaimer

Products elaborated in this Copernicus EMS Rapid Mapping activity are realized to the best of our ability, within a very short time frame, optimising the available data and information. All geographic information has limitations due to scale, resolution, date and interpretation of the original sources. No liability concerning the contents or the use thereof is assumed by the producer and by the European Union.
Please be aware that the thematic accuracy might be lower in urban and forested areas due to inherent limitations of the SAR analysis technique.

Delivery formats are Layered Geospatial PDF, GeoJPEG and vector (ESRI shapefiles, Google Earth KML, GeoJSON).

Map produced by ITHACA released by e-GEOS (ODO).
For the latest version of this map and related products visit <https://emergency.copernicus.eu/EMSR437>

jrc-ems-rapidmapping@ec.europa.eu
© European Union
For full Copyright notice visit <https://emergency.copernicus.eu/mapping/ems/site-copernicus-ems-mapping-portal>