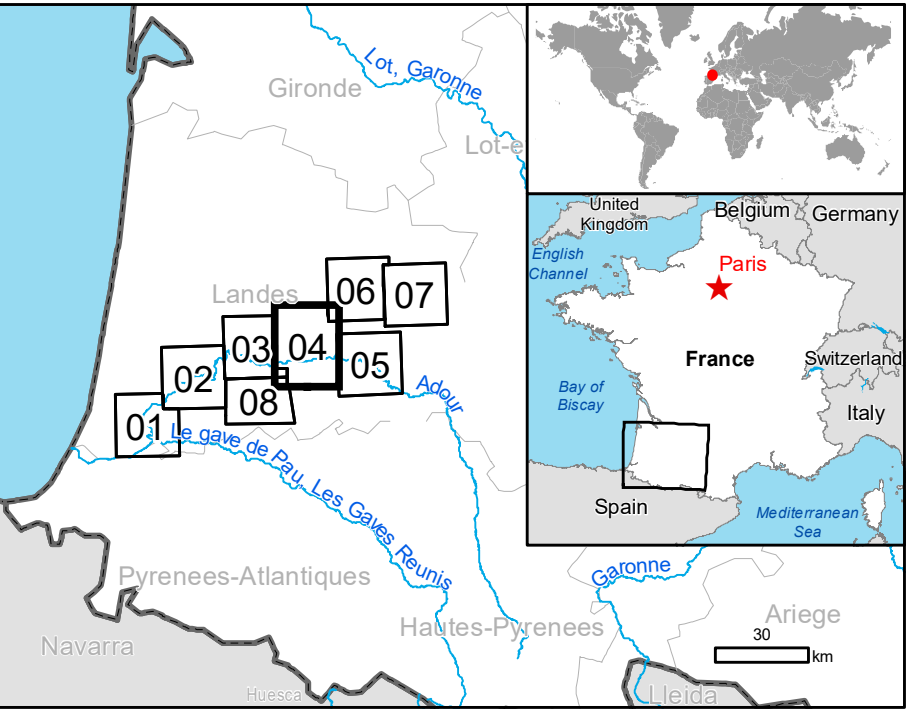


## Mont-de-Marsan - FRANCE

### Flood - Situation as of 13/05/2020

#### Delineation MONIT01 - Overview map 01



#### Cartographic Information

1:50000 Full color A1, 200 dpi resolution

Grid: WGS 1984 UTM Zone 30N map coordinate system  
Tick marks: WGS 84 geographical coordinate system

#### Legend

Crisis Information	Hydrography	Transportation
<div><div></div>Flooded Area (13/05/2020 06:08)</div> <div><div></div>Previous Flooded Area (Flooded Area 12/05/2020 05:59)</div>	<div><div></div>River</div> <div><div></div>Stream</div> <div><div></div>Lake</div> <div><div></div>Reservoir</div> <div><div></div>Facilities</div> <div><div></div>Dam</div> <div><div></div>Construction for mining or extraction</div>	<div><div></div>Primary Road</div> <div><div></div>Secondary Road</div> <div><div></div>Local Road</div> <div><div></div>Long-distance railway</div> <div><div></div>Airfield runway</div> <div><div></div>Airfield runway</div> <div><div></div>Helipad</div>
General Information	Administrative boundaries	Placenames
<div><div></div>Area of Interest</div>	<div><div></div>Municipality</div>	<div><div></div>Placename</div>
Built-Up Area	Land Use - Land Cover	
<div><div></div>Built-Up Area</div>	<div><div></div>Land Use - Land Cover</div>	

Consequences within the AOI			
		Unit of measurement	Affected / Total in AOI
Flooded area		ha	97.47
		Number of inhabitants	52428
	Residential Buildings	ha	0.0 / 2385.9
	Industrial buildings	ha	0.1 / 690.2
	Museums and libraries	ha	0.0 / 39.4
Transportation	Sports halls	ha	0.0 / 76.8
	Airfield runways	ha	0.0 / 310.2
	Helipad	ha	0.0 / 0.1
	Airfield runways	km	0.0 / 7.1
	Primary Road	km	0.1 / 116.7
Facilities	Secondary Road	km	0.4 / 100.8
	Local Road	km	1.3 / 491.6
	Long-distance railways	km	0.7 / 72.3
	Constructions for mining or extraction	ha	0.0 / 758.8
	Dams	km	0.0 / 0.4
Land use	Arable land	ha	433.7 / 20333.7
	Pastures	ha	0.0 / 106.5
	Heterogeneous agricultural areas	ha	24.9 / 6202.7
	Forests	ha	20.1 / 25062.1
	Shrub and/or herbaceous vegetation association	ha	0.0 / 9280.9
	Other	ha	0.1 / 4194.6

#### Map Information

There was a heavy rain in the southwest of France late on 10 May. These precipitations led to floods on many river basins. Red and orange flood warnings have been issued for the affected region by the National Center of Central Forecasts.

The present map shows the flood delineation in the area of Mont de Marsan (France). The thematic layer has been derived from post-event satellite image using a semi-automatic approach. The estimated geometric accuracy (RMSE) is 10 m or better, from native positional accuracy of the background satellite image.

#### Relevant date records (UTC)

Event	10/05/2020 22:00	Situation as of	13/05/2020 06:08
Activation	10/05/2020 19:35	Map production	13/05/2020

#### Data sources

Pre-event image: Sentinel-2A (2020), (acquired on 10/04/2020 at 10:50 UTC, GSD 10 m, approx. 0 % cloud coverage in AOI) provided under COPERNICUS by the European Union, ESA and European Space Imaging, all rights reserved.  
Post-event image: Sentinel-1A/B (2020) (acquired on 13/05/2020 at 06:08 UTC, GSD 10 m) provided under COPERNICUS by the European Union and ESA.  
COSMO-SkyMed © ASI (2020), distributed by e-GEOS S.p.A. (acquired on 12/05/2020 at 05:59 UTC, GSD 30.0 m), provided under COPERNICUS by the European Union and ESA, all rights reserved.

Base vector layers: OpenStreetMap © OpenStreetMap contributors, Wikimapia.org, GeoNames 2015, Corine Land Cover (CLC) 2012, Globe Land 30 (2010), Global Administrative Areas (2012), refined by the producer.  
Inset maps: JRC 2013, EuroBoundaryMap 2017 © EuroGeographics, Natural Earth 2012, CCM River DB © EURC2007, GeoNames 2013.

Population data: GHS Population Grid © European Commission, 2019

#### Disclaimer

Products elaborated in this Copernicus EMS Rapid Mapping activity are realized to the best of our ability, within a very short time frame, optimising the available data and information. All geographic information has limitations due to scale, resolution, date and interpretation of the original sources. No liability concerning the contents or the use thereof is assumed by the producer and by the European Union.  
Please be aware that the thematic accuracy might be lower in urban and forested areas due to inherent limitations of the SAR analysis technique.

Delivery formats are Layered Geospatial PDF, GeoJPEG and vector (ESRI shapefiles, Google Earth KML, GeoJSON).

Map produced by e-GEOS released b e-GEOS (ODO).

For the latest version of this map and related products visit <https://emergency.copernicus.eu/EMSR437>

For the latest version of this map and related products visit <https://emergency.copernicus.eu/mapping/emscote-copernicus-emsc-mapping-portal>