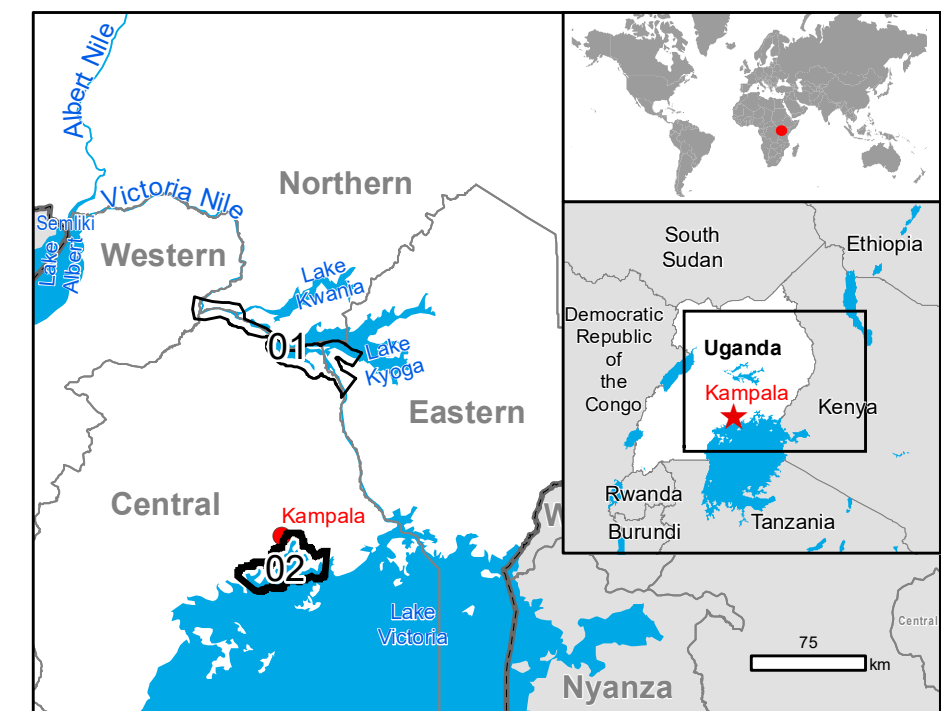


GLIDE number: FL-2020-000132-UGA Activation ID: EMSR438
Int. Charter call ID: N/A Product N.: 02KAMPALA, v1

Kampala - UGANDA

Flood - Situation as of 29/04/2020

Monit02 - Overview map 01



Cartographic Information

1:90000

Full color A1, 200 dpi resolution



Grid: WGS 1984 UTM Zone 36N map coordinate system

Tick marks: WGS 84 geographical coordinate system



Legend

Crisis Information
 Flooded Area
 (04/04/2020 (97.56 UTC))

General Information
 Area of Interest
 Not Analysed

Administrative boundaries
 — Region
 - - - Province
 Municipality

Place names
 ○ Place name

Build-Up Area
 Build-Up Area
 Build-Up Area

Hydrography
 River
 Stream
 Lake
 River

Facilities
 Construction for mining or extraction

Transportation
 Highway
 Primary Road
 Long-distance railway
 Airfield runway
 Helipad

Land Use - Land Cover
 Features available in the vector package

Consequences within the AOI		Unit of measurement	Affected	Total in AOI
Flooded area	Estimated population	ha	660.2	
Settlements	Residential Buildings	Number of inhabitants	100796	
Transportation	Highways	km	0.0	20506.7
	Harbour	km	0.0	0.1
	Artificial railways	km	0.0	18.2
	Primary Road	km	0.0	17.9
	Primary Road	km	0.0	45.2
	Long-distance railways	km	0.0	11.6
Facilities	Constructions for mining or extraction	ha	4.1	141.3
Land use	Heterogeneous agricultural area	ha	10.6	12010.4
	Forests	ha	445.3	44764.1
	Inland wetlands	ha	0.0	200.4
	Other	ha	10.3	62713.6

Map Information

Torrential rains have triggered devastating floods and landslides across East Africa in recent weeks, aggravating an already challenging situation as countries in the region battle the coronavirus pandemic. The destruction caused by the heavy rainfall has killed hundreds of people in Kenya, Uganda, Somalia, Rwanda, and Ethiopia and has also forced hundreds of thousands from their homes.

The present map shows the flood delineation in the area of Kampala (Uganda). The thematic layer has been derived from post-event satellite image by means of visual interpretation. The estimated geometric accuracy (RMSE) is 15 m or better, from native positional accuracy of the background satellite image.

Relevant date records (UTC)

Event	09/05/2020 03:00	Situation as of	29/04/2020 07:56
Activation	15/05/2020 12:42	Map production	21/05/2020

Data sources

Pre-event image: Sentinel-2A (2019) (acquired on 31/12/2019 at 08:03 UTC, GSD 10 m, approx. 0% cloud coverage in Aoi) provided under COPERNICUS by the European Union and ESA.

Post-event image: Sentinel-2A (2020) (acquired on 29/04/2020 at 07:56 UTC, GSD 10 m, approx. 40% cloud coverage in AoI) provided under COPERNICUS by the European Union and ESA.

Base vector layers: OpenStreetMap © OpenStreetMap contributors, Wikimapia.org, GeoNames 2015, Corine Land Cover (CLC) 2012, Globe Land 30 (2010), Global Administrative Areas (2012), refined by the producer.
Inset maps: JRC 2013, Natural Earth 2012, GeoNames 2013.

Population data: GHS Population Grid © European Commission, 2019
https://ghsl.jrc.ec.europa.eu/ghs_pop2019.php
 Digital Elevation Model: SRTM (90 m)

Disclaimer

Products elaborated in this Copernicus EMS Rapid Mapping activity are realized to the best of our ability, within a very short time frame, optimising the available data and information. All geographic information has limitations due to scale, resolution, date and interpretation of the original sources. No liability concerning the contents or the use thereof is assumed by the producer and by the European Union.

Please be aware that the thematic accuracy might be lower in urban and forested areas due to inherent limitations of the SAR analysis technique.

Delivery formats are Layered Geospatial PDF, GeoJPEG and vector (ESRI shapefiles, Google Earth KML, GeoJSON).

Map produced by Telespazio Ibérica released by e-GEOS (ODO)

For the latest version of this map and related products visit
<https://emergency.copernicus.eu/EMSR438>

jrc-ems-rapidmapping@ec.europa.eu
© European Union
For full Copyright notice visit <https://emergency.copernicus.eu/mapping/ems/cite-copernicus-ems-mapping-portal>