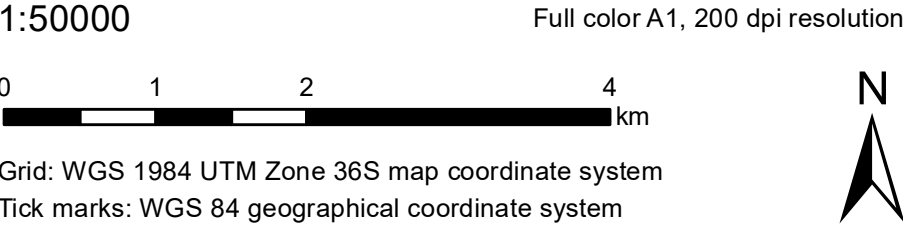


Mwanza - TANZANIA
Flood - Situation as of 19/05/2020
Delineation - Overview map 01

Cartographic Information



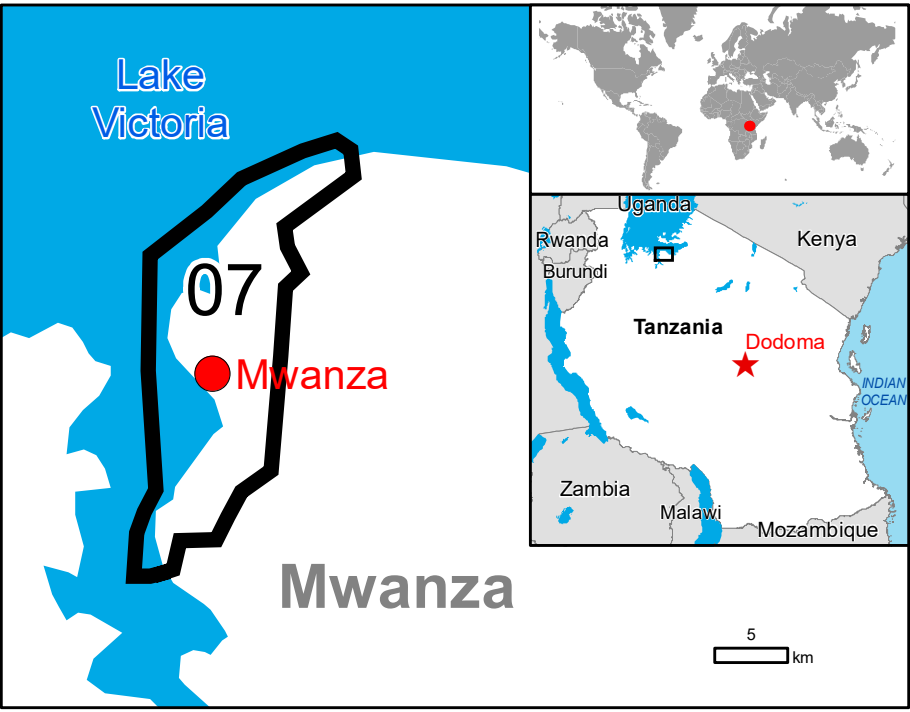
- Crisis Information**
- Flooded Area (19/05/2020 07:56 UTC)
- General Information**
- Area of Interest
 - Not Analysed
- Administrative boundaries**
- Province
 - Municipality
- Placenames**
- Placename

- Built-Up Area**
- Built-Up Area
- Hydrography**
- River
 - Stream
 - Island
 - Lake
 - Reservoir

- Transportation**
- Primary Road
 - Secondary Road
 - Local Road
 - Cart Track
 - Long-distance railway
 - Airfield runway
- Land Use - Land Cover**
- Features available in the vector package

Legend

| Consequences within the AOI | | | |
|-----------------------------|--|----------|--------------|
| | Unit of measurement | Affected | Total in AOI |
| Flooded area | ha | | 35.8 |
| Estimated population | Number of inhabitants | | 544090 |
| Settlements | Residential Buildings | ha | 7246.1 |
| | Airfield runways | km | 0.0 |
| | Primary Road | km | 0.0 |
| | Secondary Road | km | 0.0 |
| | Local Road | km | 0.0 |
| | Cart Track | km | 0.0 |
| Transportation | Long-distance railways | km | 0.0 |
| | Heterogeneous agricultural areas | ha | 2.9 |
| | Forests | ha | 22.6 |
| Land use | Shrub and/or herbaceous vegetation association | ha | 6.9 |
| | Other | ha | 3.4 |
| | | | 12154.0 |



Map Information

Torrential rains have triggered devastating floods and landslides across East Africa in recent weeks, aggravating an already challenging situation as countries in the region battle the coronavirus pandemic. The destruction caused by the heavy rainfall has killed hundreds of people in Kenya, Uganda, Somalia, Rwanda, and Ethiopia and has also forced hundreds of thousands from their homes.

The present map shows the flood delineation in the area of Mwanza (Tanzania). The thematic layer has been derived from post-event satellite image by means of visual interpretation. The estimated geometric accuracy (RMSE) is 15 m or better, from native positional accuracy of the background satellite image.

Data sources

Pre-event image: Sentinel-2A (2020) (acquired on 09/02/2020 at 08:00 UTC, GSD 10 m, approx. 0% cloud coverage in AoI) provided under COPERNICUS by the European Union and ESA.
Post-event image: Sentinel-2A (2020) (acquired on 19/05/2020 at 07:56 UTC, GSD 10 m, approx. 1% cloud coverage in AoI) provided under COPERNICUS by the European Union and ESA.

Base vector layers: OpenStreetMap © OpenStreetMap contributors, Wikimapia.org, GeoNames 2015, Corine Land Cover (CLC) 2012, Globe Land 30 (2010), Global Administrative Areas (2012), refined by the producer.
Inset maps: JRC 2013, Natural Earth 2012, GeoNames 2013.

Population data: GHS - Population Grid © European Commission, 2019
https://ghsl.jrc.ec.europa.eu/ghs_pop2018.php
Digital Elevation Model: SRTM (90 m) (NASA/USGS).

Disclaimer

Products elaborated in this Copernicus EMS Rapid Mapping activity are realized to the best of our ability, within a very short time frame, optimising the available data and information. All geographic information has limitations due to scale, resolution, date and interpretation of the original sources. No liability concerning the contents or the use thereof is assumed by the producer and by the European Union.

Delivery formats are Layered Geospatial PDF, GeoJPEG and vector (ESRI shapefiles, Google Earth KML, GeoJSON).

Map produced by Telespazio Iberica released by e-GEOS (ODO).

For the latest version of this map and related products visit
https://emergency.copernicus.eu/EMSR438

jrc-ems-rapidmapping@ec.europa.eu
© European Union
For full Copyright notice visit https://emergency.copernicus.eu/mapping/ems-cite-copernicus-ems-mapping-portal

Relevant date records (UTC)

| | | | |
|------------|------------------|-----------------|------------------|
| Event | 09/05/2020 00:00 | Situation as of | 19/05/2020 07:56 |
| Activation | 15/05/2020 12:42 | Map production | 28/05/2020 |