

Paso Wawabun - NICARAGUA

Flood - Pre-event situation

Reference - Overview map 01

Cartographic Information

1:17000

Full color A1, 200 dpi resolution

0 0.35 0.7 1.4 km

Grid: WGS 1984 UTM Zone 17N map coordinate system
Tick marks: WGS 84 geographical coordinate system



General Information Transportation

- Area of Interest
- Not Analysed

- Placenames
- Placename

- Built-Up Area
- Residential

- Hydrography
- River
- Stream
- Lake
- River

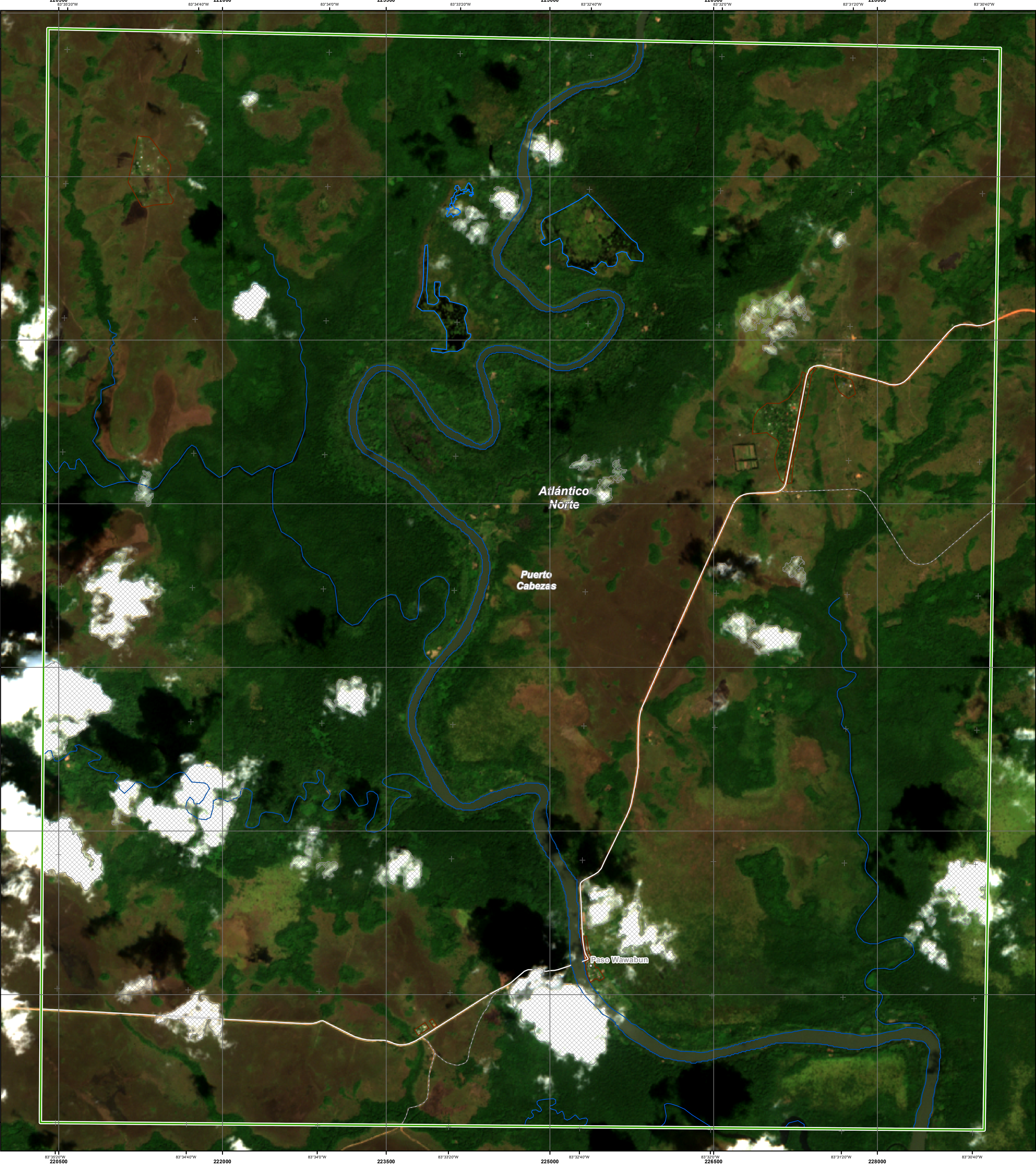
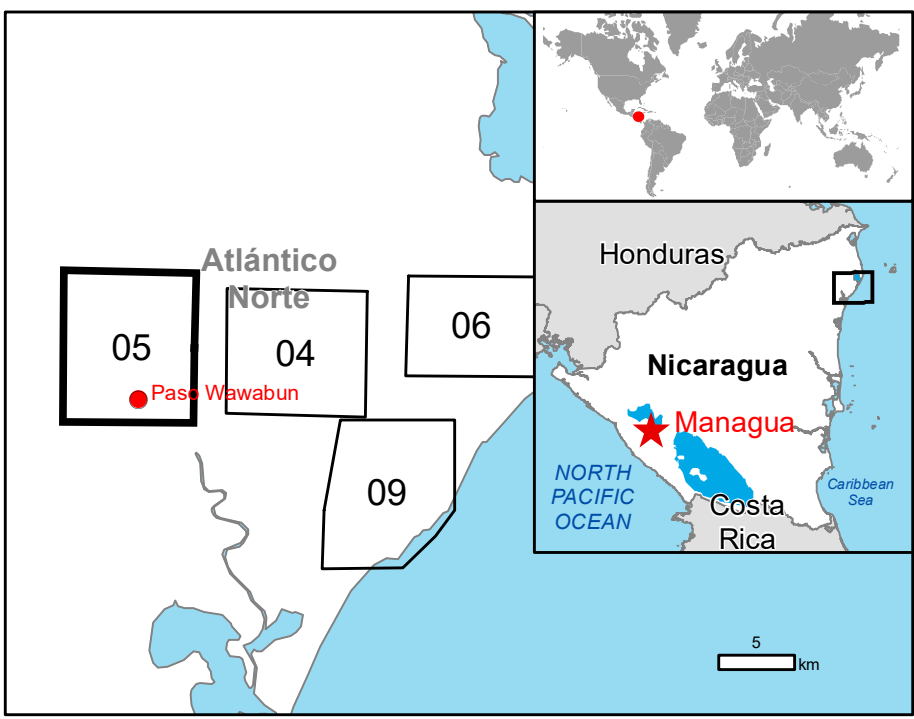
- Primary Road
- Cart Track

Physiography & Land Use - Land Cover

Features available in the vector package

Exposure within the AOI		Unit of measurement	Total in AOI
Estimated population	Number of inhabitants	NA	NA
Settlements	Residential Buildings	ha	45.7
Transportation	Primary Road	km	13.3
	Cart Track	km	4.6
Land use	Forests	ha	7003.1
	Shrub and/or herbaceous vegetation association	ha	1244.3
	Inland wetlands	ha	245.5
	Other	ha	173.4

Legend



Map Information

From 10 August to 20 August, three consecutive tropical waves had produced floods in more than ten indigenous communities in the North Caribbean Region. The Mayor of Puerto Cabezas Municipality in Nicaragua, reported heavy rain and an overflow of the Wawa Boom river affecting families in the communities of Betania and Wawaboom. In addition, media reported more than 500 families and 84 homes were affected in Bilwi Municipality. An overflow of the Kukalaya river in El Pinol community affected several homes, a church, and road. Affected communities include Wawa bum, Betania, Sangnilaya, Belen, Butku, Panua, Auiya Tara, Auiya Pihni, Tasba Piri, Kukalaya, El Pinol, Masmalaya, Akawas.

The present map shows basic topographic features derived from public datasets, refined by means of visual interpretation of pre-event imagery.

Data sources

Pre-event image: Sentinel-2A/B (2020) (acquired on 26/01/2020 at 16:07 UTC, GSD 10 m, approx. 5% cloud coverage in AOI, 0° off-nadir angle) provided under COPERNICUS by the European Union and ESA.

Base vector layers: OpenStreetMap © OpenStreetMap contributors, Wikimapia.org, GeoNames 2015, Globe Land 30 (2010), Global Administrative Areas (2012), refined by the producer

Inset maps: JRC 2013, Natural Earth 2012, GeoNames 2013.

Population data: GHS Population Grid © European Commission, 2019
https://ghsl.jrc.ec.europa.eu/ghs_pop2019.php

Digital Elevation Model: SRTM (90 m) (NASA/USGS)

Disclaimer

Products elaborated in this Copernicus EMS Rapid Mapping activity are realized to the best of our ability, within a very short time frame, optimising the available data and information. All geographic information has limitations due to scale, resolution, date and interpretation of the original sources. No liability concerning the contents or the use thereof is assumed by the producer and by the European Union.

Delivery formats are Layered Geospatial PDF, GeoJPEG and vector (ESRI shapefiles, Google Earth KML, GeoJSON).

Map produced by GAF AG released by e-GEOS (ODO).

For the latest version of this map and related products visit <https://emergency.copernicus.eu/EMSR456>

Jrc-ems-rapidmapping@ec.europa.eu
© European Union
For full Copyright notice visit <https://emergency.copernicus.eu/mapping/ems/cite-copernicus-ems-mapping-portal>

Relevant date records (UTC)

Event	10/08/2020 10:00	Situation as of	N/A
Activation	24/08/2020 19:00	Map production	25/08/2020