

Borgou - TOGO

Flood - Situation as of 17/10/2020

Grading - Overview map 01

Cartographic Information

1:6000 Full color A1, 200 dpi resolution

0 0.15 0.3 0.6 km

Grid: WGS 1984 UTM Zone 31N map coordinate system
Tick marks: WGS 84 geographical coordinate system

Legend

Crisis Information

Flooded Area
(17/10/2020 10:21 UTC)

Flood trace

Transportation Grading

Road, Damaged

Road, Possibly damaged

Local Road, No visible damage

Bridge and elevated highway, No visible damage

General Information

Area of Interest

Not Analysed

Placenames

Placename

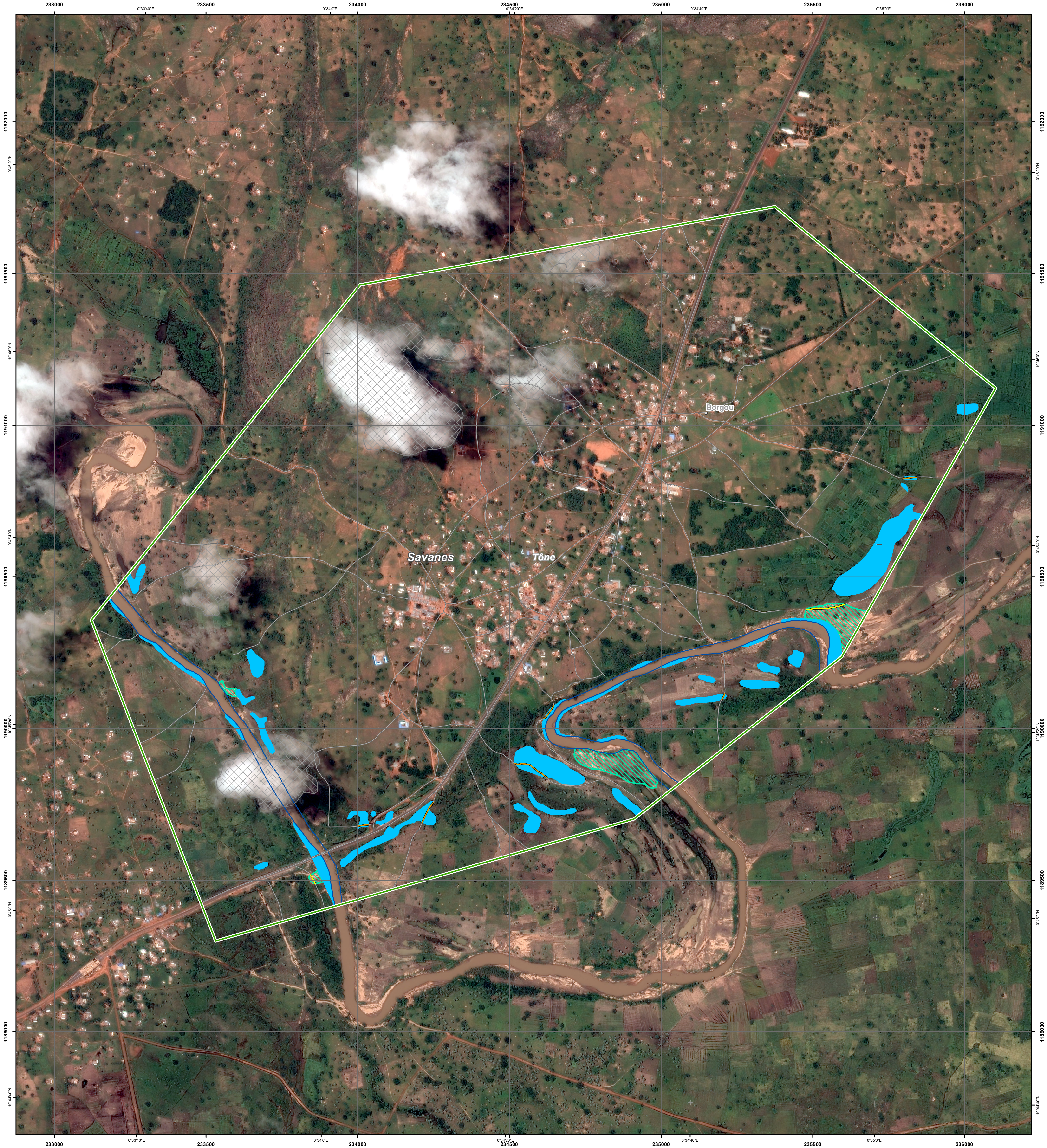
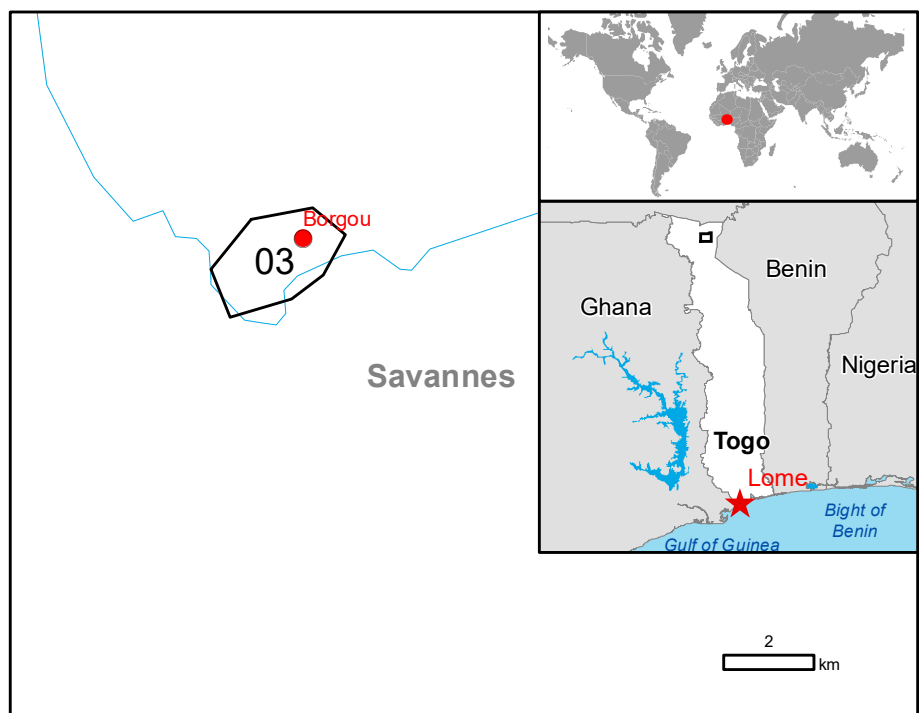
Hydrography

River

Physiography & Land Use - Land Cover

Features available in the vector package

Consequences within the AOI		Unit of measurement	Destroyed	Damaged	Possibly damaged	Total affected	Total in AOI
Flooded area		ha					12
Flood trace		ha					3.6
Estimated population							1571
Transportation		Number of inhabitants					
Bridges and elevated highways		km	0.0	0.0	0.0	0.0	0.1
Local Road		km	0.0	0.4	0.2	0.6	27.8
Land use							
Heterogeneous agricultural areas		ha	0.0	0.0	0.0	2.8	236.6
Forests		ha	0.0	0.0	0.0	4.1	20.1
Shrub and/or herbaceous vegetation association		ha	0.0	0.0	0.0	8.7	139.1
Other		ha	0.0	0.0	0.0	0.0	49.4



Map Information

Since the 05/10/2020, Togo is badly affected by the flooding of the Oti river and its tributaries. Many victims and damages have been reported especially in rural and peri-urban areas. The flood extent situation is needed to assess impacts on settlements, agricultural systems and damages on infrastructure.

The present map shows the damage grade assessment in the area of Borgou (Togo). The thematic layer has been derived from post-event satellite image by means of visual interpretation. The estimated geometric accuracy (RMSE) is 2.5 m or better, from native positional accuracy of the background satellite image.

Data sources

Pre-event image: ESRI World Imagery © DigitalGlobe (acquired on 19/12/2015, GSD 1.2 m, approx. 0% cloud coverage in AOI).
Post-event image: Pléiades-1A/B © CNES (2020), distributed by Airbus DS (acquired on 17/10/2020 at 10:21 UTC, GSD 0.5 m, approx. 10% cloud coverage in AOI, 31.3° off-nadir angle), provided by International Charter (call ID 781), all rights reserved.

Base vector layers: OpenStreetMap © OpenStreetMap contributors, Wikimapia.org, GeoNames 2015, Globe Land 30 (2010), Global Administrative Areas (2012), refined by the producer.
Inset maps: JRC 2013, Natural Earth 2012, GeoNames 2013.

Population data: GHS - Population
https://ghsl.jrc.ec.europa.eu/ghs.php2019.php
Digital Elevation Model: SRTM (90 m)

Grid © European Commission, 2019

Disclaimer

Products elaborated in this Copernicus EMS Rapid Mapping activity are realized to the best of our ability, within a very short time frame, optimising the available data and information. All geographic information has limitations due to scale, resolution, date and interpretation of the original sources. No liability concerning the contents or the use thereof is assumed by the producer and by the European Union.

Delivery formats are Layered Geospatial PDF, GeoJPEG and vector (ESRI shapefiles, Google Earth KML, GeoJSON).

Map produced by e-GEOS released by e-GEOS (ODO).

For the latest version of this map and related products visit
https://emergency.copernicus.eu/mapping/ems/cite-copernicus-ems-mapping-portal

jrc-ems-rapidmapping@ec.europa.eu
© European Union
For full Copyright notice visit https://emergency.copernicus.eu/mapping/ems/cite-copernicus-ems-mapping-portal

Relevant date records (UTC)

Event	05/10/2020 18:00	Situation as of	17/10/2020 10:21
Activation	13/10/2020 19:17	Map production	18/10/2020

