

## NDALOMO - FIJI

### Storm - Situation as of 22/12/2020

#### Grading - Overview map 01

#### Cartographic Information

1:20000

Full color A1, 200 dpi resolution

0 0.4 0.8 1.6 km

Grid: WGS 1984 UTM Zone 60S map coordinate system  
Tick marks: WGS 84 geographical coordinate system



#### Crisis Information

Flooded Area  
(22/12/2020 22:41 UTC)

Flood trace

#### Built Up Grading

Destroyed

Damaged

Possibly damaged

Bridge and elevated highways, Destroyed

Road, Damaged

Road, Possibly damaged

Secondary Road, No visible damage

Local Road, No visible damage

Cart Track, No visible damage

#### General Information

Area of Interest

Not Analysed

#### Administrative boundaries

International Boundary

Region

Province

#### Placenames

Placename

#### Hydrography

Coastline

River

Stream

Lake

Open Water

River

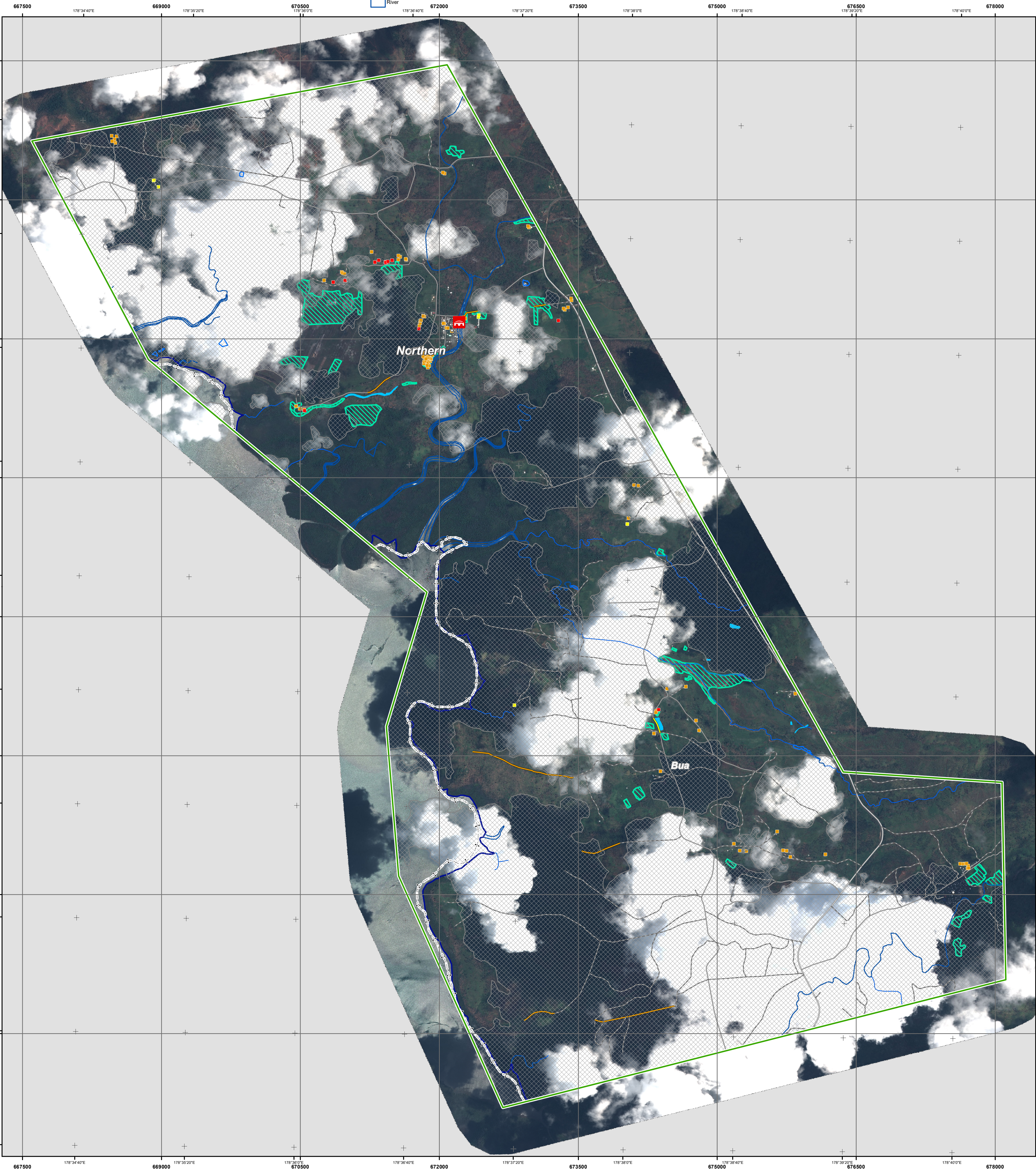
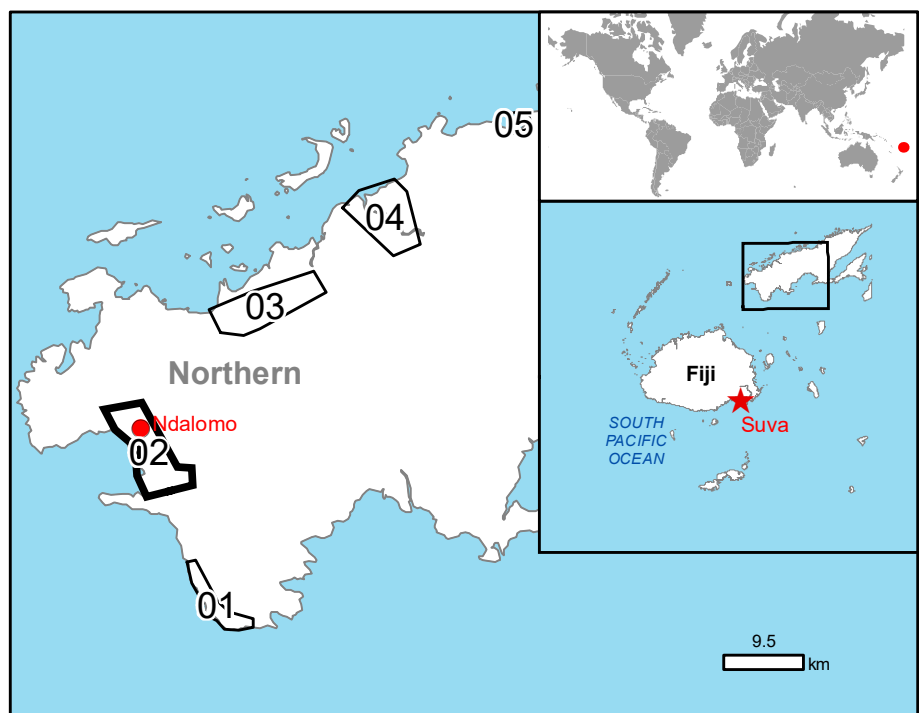
#### Land Use - Land Cover

Features available in the vector package

#### Grading Layers

are included in the detail maps  
and in the vector package

Consequences within the AOI		Unit of measurement	Destroyed	Damaged	Possibly damaged	Total affected	Total in AOI
Loss of tree cover		ha				310.1	
Flooded area		ha				2.9	
Flood trace		ha				65.3	
Estimated population						905	
Settlements							
Residential Buildings	No.	12	96	7	115	115	
Transportation							
Secondary Road	km	0.0	0.0	0.0	0.0	9.6	
Local Road	km	0.0	0.5	0.2	0.6	31.4	
Cart Track	km	0.0	2.9	0.0	2.9	66.4	
Bridges and elevated highways	No.	1	0	0	1	1	
Land use							
Arable land	ha	N/A	N/A	N/A	81.6	908.0	
Heterogeneous agricultural areas	ha	N/A	N/A	N/A	272.2	3327.8	
Forests	ha	N/A	N/A	N/A	7.4	354.5	
Shrub and/or herbaceous vegetation association	ha	N/A	N/A	N/A	0.0	72.8	
Other	ha	N/A	N/A	N/A	17.0	439.8	



#### Map Information

Category 5 Tropical Cyclone Yasa, the second major tropical cyclone to make landfall this year, hit Fiji's second largest island – Vanua Levu – on 17 December unleashing winds as high as 350 km/h. While it was fast approaching Suva in the South-East of the main island Viti Levu, it passed at around 130 km from Suva, weakening on 18 December rapidly into a category 4 system at 6am and further downgraded into a category 3 system at 8am. The TC Yasa is currently heading towards Tonga. Samoa has also reported damages due to floods.

The present map shows the damage grade assessment in the area of Ndalomo (Republic of Fiji). The thematic layer has been derived from post-event satellite image by means of visual interpretation. The scale of analysis is 1:10000. The estimated geometric accuracy (RMSE) is 2.5 m or better, from native positional accuracy of the background satellite image. The minimum mapping unit (MMU) is 100 sq m.

#### Data sources

Pre-event image: ESRI World Imagery © DigitalGlobe (acquired on 29/07/2016, GSD 0.5 m, approx. 5% cloud coverage in AOI).  
Post-event image: Pléiades-1A/B © CNES (2020), distributed by Airbus DS (acquired on 22/12/2020 at 22:41 UTC, GSD 0.5 m, approx. 28.6% cloud coverage in AOI, 29.1° off-nadir angle), provided under COPERNICUS by the European Union and ESA, all rights reserved.

Base vector layers: OpenStreetMap © OpenStreetMap contributors (2020), Wikimapia.org, GeoNames 2015, GlobCover (2009), Global Administrative Areas (2012), refined by the producer.  
Inset maps: JRC 2013, Natural Earth 2012, GeoNames 2013.

Population data: Population Grid © European Commission, 2019  
[https://ghsl.jrc.ec.europa.eu/ghs\\_pop2019.php](https://ghsl.jrc.ec.europa.eu/ghs_pop2019.php)

#### Disclaimer

Products elaborated in this Copernicus EMS Rapid Mapping activity are realized to the best of our ability, within a very short time frame, optimising the available data and information. All geographic information has limitations due to scale, resolution, date and interpretation of the original sources. No liability concerning the contents or the use thereof is assumed by the producer and by the European Union.

Delivery formats are Layered Geospatial PDF, GeoJPEG and vector (ESRI shapefiles, Google Earth KML, GeoJSON).

Map produced by SIRS released by e-GEOS (ODO).

For the latest version of this map and related products visit <https://emergency.copernicus.eu/EMSR489>

Jrc-ems-rapidmapping@ec.europa.eu  
© European Union  
For full Copyright notice visit <https://emergency.copernicus.eu/mapping/ems/cite-copernicus-ems-mapping-portal>

#### Relevant date records (UTC)

Event	17/12/2020 07:00	Situation as of	22/12/2020 22:41
Activation	18/12/2020 09:09	Map production	23/12/2020