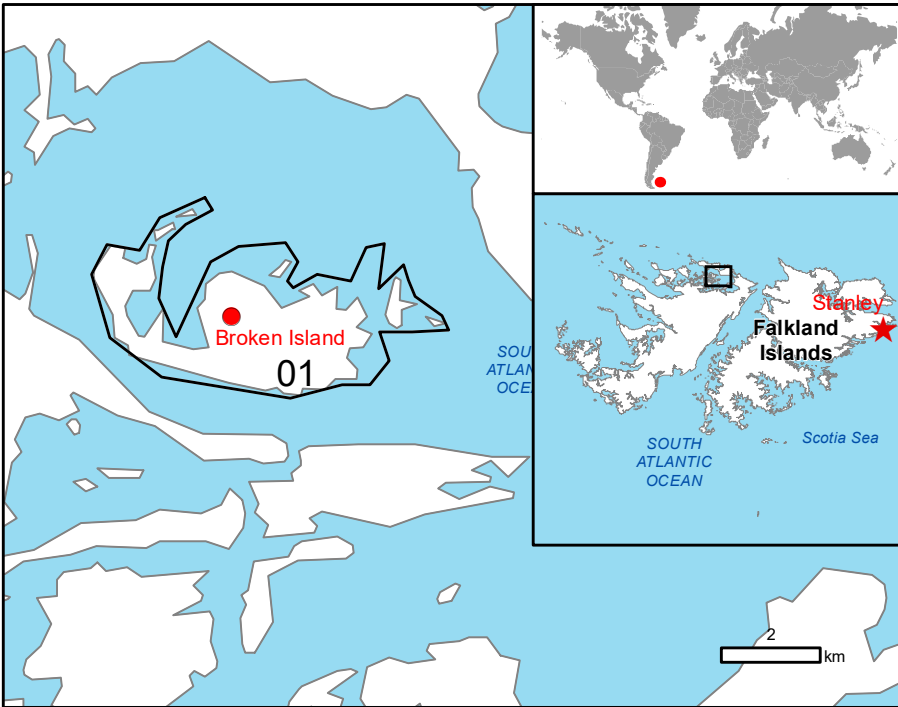


GLIDE number: N/A Activation ID: EMSR560
Int. Charter Act. ID: N/A Product N.: 01BROKENISLAND, v2

Broken Island - FALKLAND ISLANDS

Wildfire - Situation as of 28/01/2022

Delineation - Overview map 01



Cartographic Information

1:11000 Full color A1, 200 dpi resolution

0 0.25 0.5 1 km

Grid: WGS 1984 UTM Zone 21S map coordinate system
Tick marks: WGS 84 geographical coordinate system

Legend

| Crisis Information | Hydrography |
|--|---|
| — Fire Fronts | — Coastline |
| Burnt Area (28/01/2022 13:28 UTC) | Land Use - Land Cover |
| Area of Interest | Features available in the vector package |
| Not Analysed | |
| Placenames | |
| ● Placename | |

| Consequences within the AOI | Unit of measurement | Affected | Total in AOI |
|-----------------------------|--|----------|--------------|
| Burnt area | ha | 438.4 | 440.9 |
| Fire Fronts | km | 0 | 0.5 |
| Estimated population | Number of inhabitants | 0 | 0 |
| Land use | Shrub and/or herbaceous vegetation association | ha | 438.4 |
| | Inland wetlands | ha | 0.9 |
| | | | 123.0 |

Map Information

On 21/01 significant wildfire on Broken Island started. Fire well alight, spreading. Causing significant smoke in atmosphere and over other islands. At present it is impossible to access by aircraft or boat to ascertain spread and damage.

The present map shows the fire delineation in the area of Broken Island (Falkland Islands). The thematic layer has been derived from post-event satellite image by means of visual interpretation. The scale of analysis is 10,000. The estimated geometric accuracy (RMSE) is 3 m or better, from native positional accuracy of the background satellite image. The minimum mapping unit (MMU) is 225 sq m.

Relevant date records (UTC)

| | | | |
|------------|------------------|-----------------|------------------|
| Event | 21/01/2022 14:45 | Situation as of | 28/01/2022 13:28 |
| Activation | 25/01/2022 21:31 | Map production | 31/01/2022 |

Data sources

Pre-event image: ESRI World Imagery © DigitalGlobe (acquired on 03/07/2021, GSD 0.5 m, approx. 2% cloud coverage in AOI).
Post-event image: SPOT60 AirbusDS (2022), (acquired on 28/01/2022 at 13:28UTC, GSD 1.5 m, approx. 40% cloud coverage in AOI, 13.7° off-nadir angle).
Sentinel-2A (2022) (acquired on 22/01/2022 at 13:46 UTC, GSD 10 m, approx. 10% cloud coverage in AOI), provided under COPERNICUS by the European Union and ESA

Base vector layers: OpenStreetMap © OpenStreetMap contributors (2021), Wikimapia.org, GeoNames 2015, Globe Land 30 (2020), Global Administrative Areas (2012), refined by the producer.
Inset maps: JRC 2013, Natural Earth 2012, GeoNames 2015.

Population data: GHS Population Grid © European Commission, 2019
https://ghsl.jrc.ec.europa.eu/ghs_pop2019.php
Digital Elevation Model: SRTM (30 m) (NASAUSGS)

Disclaimer

Products elaborated in this Copernicus EMS Rapid Mapping activity are realized to the best of our ability, within a very short time frame, optimising the available data and information. All geographic information has limitations due to scale, resolution, date and interpretation of the original sources. No liability concerning the contents or the use thereof is assumed by the producer and by the European Union.

Delivery formats are Layered Geospatial PDF, GeoJPEG and vector (ESRI shapefiles, Google Earth KML, GeoJSON).

Map produced by e-GEOS released by e-GEOS (ODO).

For the latest version of this map and related products visit
<https://emergency.copernicus.eu/EMSR560>

jrc-ems-rapidmapping@ec.europa.eu
© European Union
For full Copyright notice visit <https://emergency.copernicus.eu/mapping/ems/cite-copernicus-ems-mapping-portal>