

Nacimiento - CHILE

Wildfire - Situation as of 11/02/2023

Delineation MONIT03 - Overview map 01

Cartographic Information

1:140000

Full color A1, 200 dpi resolution

0 2.5 5 10 km

Grid: WGS 1984 UTM Zone 18S map coordinate system
Tick marks: WGS 84 geographical coordinate system

Legend

Crisis Information

- Active Flames
- Burnt Area

General Information

- Area of Interest
- Image Footprint
- Not Analysed

Administrative boundaries

- Region
- Province
- Municipality

Placenames

- Placename
- Built-Up Area
- Residential

Hydrography

- River
- Stream
- Lake
- Land Subject to Inundation

Facilities

- Power and communication line
- Navigable canal
- Dam
- Berthing Structure
- Construction for mining or extraction
- Power plant construction
- Sport and recreation constructions
- Dump Site
- Settling Basin
- Breakwater

Transportation

- Highway
- Primary Road
- Secondary Road
- Local Road
- Long-distance railway
- Airfield runway
- Airfield runway

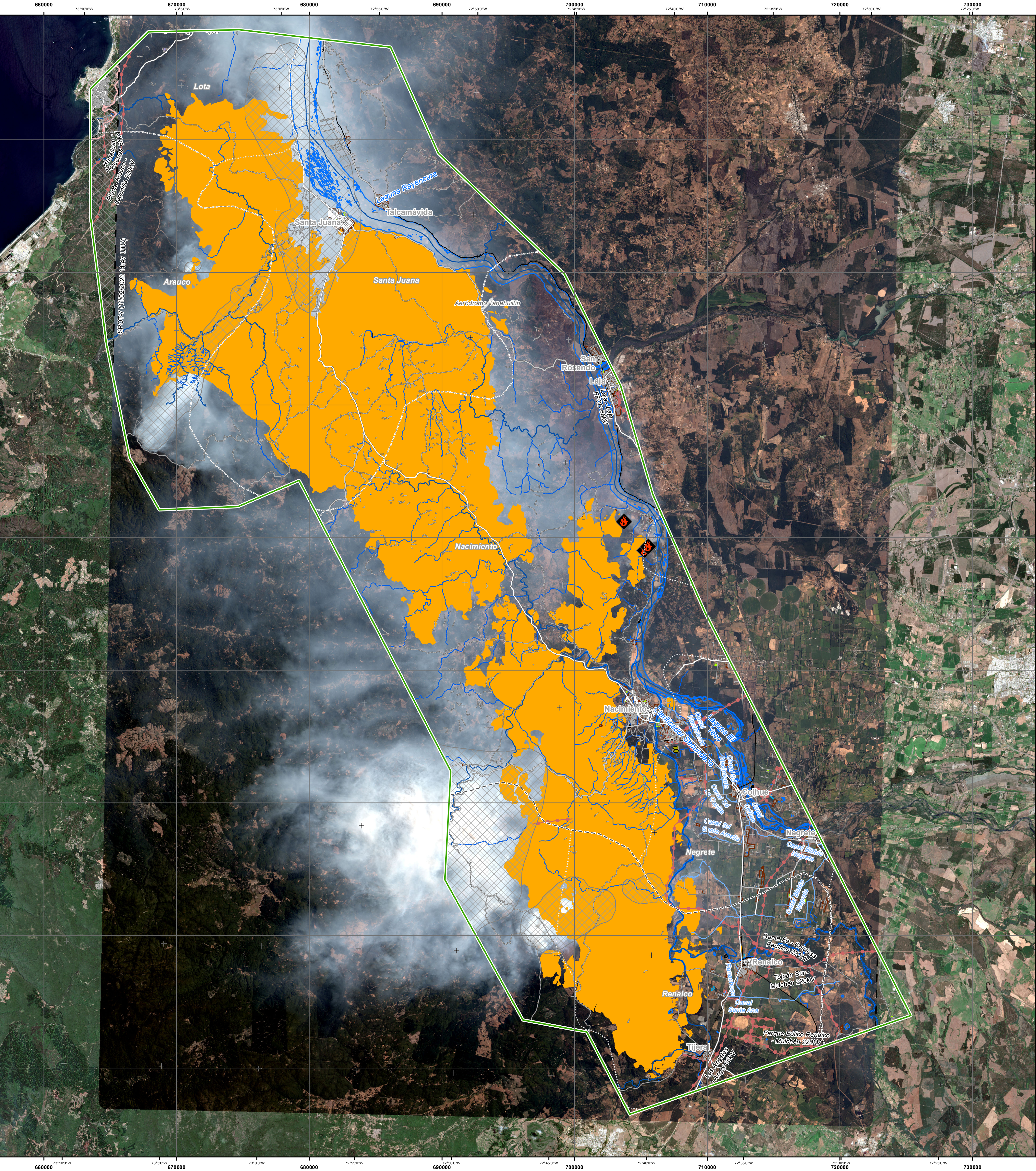
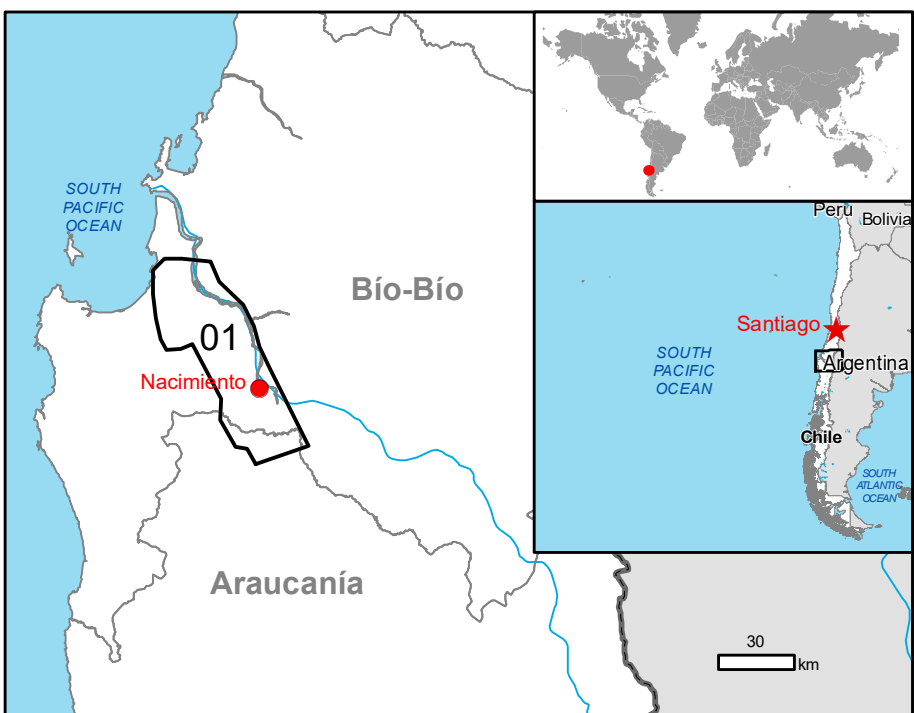
Land Use - Land Cover

Features available in the vector package

Consequences within the AOI

	Affected	Total in AOI
Burnt area	ha	91,586.0
Active Flames	No.	3
Estimated population		9,458
Built-up	ha	6.9
Transportation	km	413.4
Facilities	km	12.4
Land use	ha	91,586.0

Full table available in the vector package



Map Information

In the last weeks (January- February 2023), Chile was heavily affected by serious forest fires/wild fires. On 5 January Chile requested support from UCPM Member States/Participating States to limit the consequences of the destructive fires. The EMS Copernicus service for satellite maps was triggered in support to operations in the affected areas.

The present map shows the fire delineation in the area of Nacimiento (Chile). The thematic layer has been derived from post-event satellite image by means of visual interpretation. The scale of analysis is 1:25,000. The estimated geometric accuracy (RMSE) is 12 m or better, from native positional accuracy of the background satellite image. The minimum mapping unit (MMU) is 900 sq. m.

Data sources

Pre-event image: Sentinel-2B (2023) (acquired on 03/01/2023 at 14:37 UTC, GSD 10 m, approx. 0% cloud coverage in AOI, 0° off-nadir angle), provided under COPERNICUS by the European Union and ESA.

Post-event image: SPOT6/7 © Airbus DS (2023), (acquired on 11/02/2023 at 14:47 UTC, GSD 6 m, approx. 10% cloud coverage in AOI, 33.2° off-nadir angle), provided under COPERNICUS by the European Union and ESA, all rights reserved.

Base vector layers: OpenStreetMap © OpenStreetMap contributors (2022), Wikimapia.org, GeoNames 2015, Copernicus Global Land Service: Land Cover (2019), Global Administrative Areas (2012), refined by the producer.

Inset maps: JRC 2013, Natural Earth 2012, GeoNames 2015.

Population data: GHS Population Grid © European Commission, 2022
https://ghsl.jrc.ec.europa.eu/ghs_pop2022.php

Disclaimer

Products elaborated in this Copernicus EMS Rapid Mapping activity are realized to the best of our ability, within a very short time frame, optimising the available data and information. All geographic information has limitations due to scale, resolution, date and interpretation of the original sources. No liability concerning the contents or the use thereof is assumed by the producer and by the European Union.

The current Burnt Area Delineation cumulates all burnt area extents from previous post-event products.

Delivery formats are Layered Geospatial PDF, GeoJPEG and vector (ESRI shapefiles, Google Earth KML, GeoJSON).

Map produced by GAF AG released by e-GEOS (ODO).

For the latest version of this map and related products visit <https://emergency.copernicus.eu/EMSR647>

JRC-ems-rapidmapping@ec.europa.eu
© European Union
For full Copyright notice visit <https://emergency.copernicus.eu/mapping/ems-cite-copernicus-ems-mapping-portal>

Relevant date records (UTC)

Event	05/02/2023 00:00	Situation as of	11/02/2023 14:47
Activation	05/02/2023 20:28	Map production	13/02/2023