

# Nacimiento - CHILE

## Wildfire - Situation as of 02/02/2023

### First Estimate Product

#### Cartographic Information

1:125000

Full color A1, 200 dpi resolution

0 2.5 5 10 km

Grid: WGS 1984 UTM Zone 18S map coordinate system  
Tick marks: WGS 84 geographical coordinate system



#### Crisis Information

Burnt Area

#### General Information

Area of Interest

#### Administrative boundaries

Region

Province

Municipality

#### Placenames

Placename

#### Hydrography

River

Stream

Lake

Land Subject to Inundation

#### Transportation

Highway

Primary Road

Secondary Road

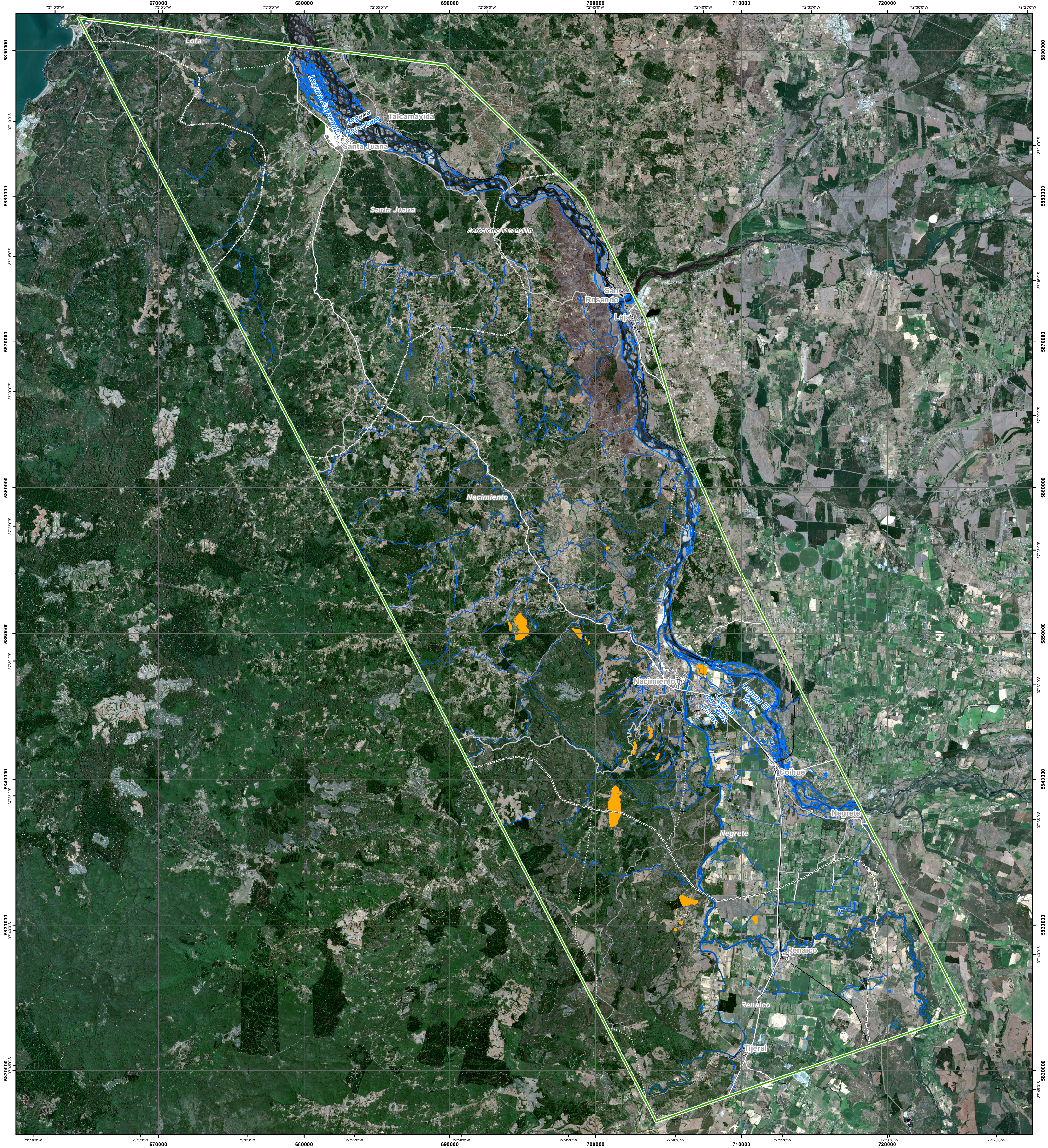
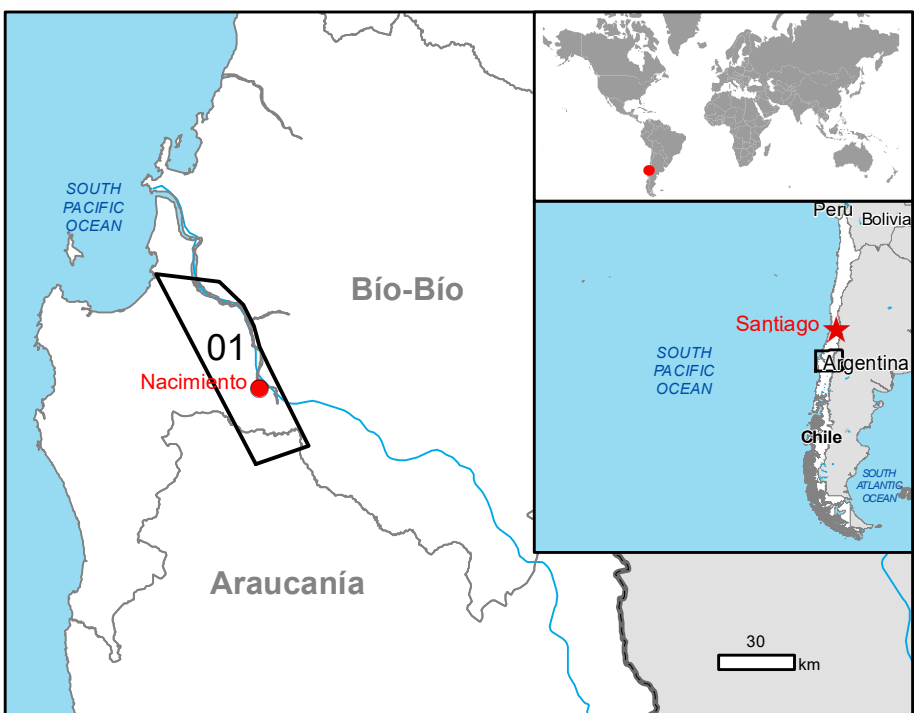
Local Road

Long-distance railway

Airfield runway

Airfield runway

#### Legend



#### Map Information

In the last weeks (January- February 2023), Chile was heavily affected by serious forest fires/wild fires. On 5 January Chile requested support from UCPM Member States/Participating States to limit the consequences of the destructive fires. The EMS Copernicus service for satellite maps was triggered in support to operations in the affected areas.

The present map shows the First Estimate Product in the area of Nacimiento (Chile). The thematic layer has been derived from post-event satellite image by means of visual interpretation. The scale of analysis is 1:50.000. The estimated geometric accuracy (RMSE) is 20 m or better, from native positional accuracy of the background satellite image. The minimum mapping unit (MMU) is 2.500 sq. m.

#### Data sources

Post-event image: Sentinel-2B (2023) (acquired on 02/02/2023 at 14:53 UTC, GSD 10 m, approx. 0% cloud coverage in AoI, 0° off-nadir angle) provided under COPERNICUS by the European Union and ESA.

Base vector layers: OpenStreetMap © OpenStreetMap contributors (2022), Wikimapia.org, GeoNames 2015, Global Administrative Areas (2012), refined by the producer.  
Inset maps: JRC 2013, Natural Earth 2012, GeoNames 2015.

#### Disclaimer

Products elaborated in this Copernicus EMS Rapid Mapping activity are realized to the best of our ability, within a very short time frame, optimising the available data and information. All geographic information has limitations due to scale, resolution, date and interpretation of the original sources. No liability concerning the contents or the use thereof is assumed by the producer and by the European Union.

Delivery formats are Layered Geospatial PDF, GeoJPEG and vector (ESRI shapefiles, Google Earth KML, GeoJSON).

Map produced by GAF AG released by e-GEOS (ODO).

For the latest version of this map and related products visit <https://emergency.copernicus.eu/EMSR647>

jrc-ems-rapidmapping@ec.europa.eu  
© European Union  
For full Copyright notice visit <https://emergency.copernicus.eu/mapping/ems/cite-copernicus-ems-mapping-portal>

#### Relevant date records (UTC)

Event	05/01/2023 00:00	Situation as of	02/02/2023 14:53
Activation	05/02/2023 20:28	Map production	13/02/2023



PROGRAMME OF THE  
EUROPEAN UNION

