

**Galvarino - CHILE**  
**Wildfire - Situation as of 09/02/2023**  
Delineation MONIT01 - Overview map 01

*Cartographic Information*

1:150000      Full color A1, 200 dpi resolution

0      3      6      12 km

Grid: WGS 1984 UTM Zone 18S map coordinate system  
Tick marks: WGS 84 geographical coordinate system

**Crisis Information**

Active Flames

**Crisis Information**

Burnt Area

**General Information**

Area of Interest

Image Footprint

**Administrative boundaries**

Region

Province

Municipality

**Placenames**

Placename

**Built-Up Area**

Built-Up Area

**Hydrography**

River

Stream

Lake

Land Subject to Inundation

**Facilities**

Construction for mining or extraction

Water Well

Power plant construction

Sport and recreation constructions

Dump Site

**Transportation**

Primary Road

Secondary Road

Local Road

Cart Track

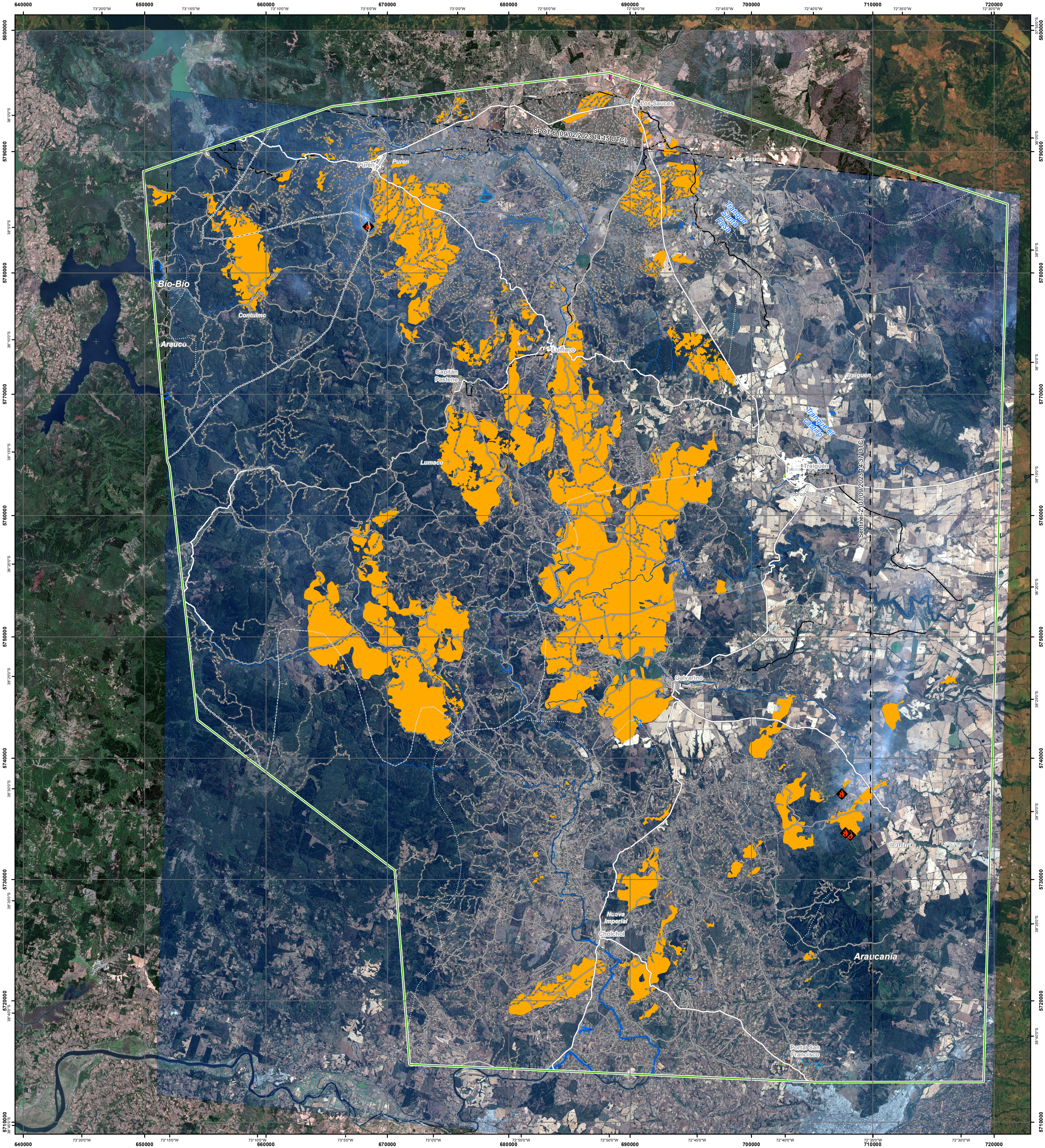
Long-distance railway

Airfield runway

**Land Use - Land Cover**

Features available in the vector package

Consequences within the AOI		Unit of measurement	Affected	Total in AOI
Burnt area		ha	54,406.9	4
Active Flames		No	601	79,759
Estimated population	Number of inhabitants			
Built-up	Residential Buildings	ha	1.4	1,109.0
	Industrial buildings	ha	0.0	26.7
	School, university and research buildings	ha	0.0	18.2
	Hospital or institutional care buildings	ha	0.0	4.7
	Military	ha	0.0	4.2
	Cemetery	ha	0.0	31.1
Transportation	Airfield runways	ha	0.0	6.8
	Airfield runways	km	0.0	0.7
	Primary Road	km	20.7	350.0
	Secondary Road	km	1.4	66.3
	Local Road	km	347.2	1,939.8
	Cart Track	km	454.9	3,936.9
	Long-distance railways	km	11.0	142.6
Facilities	Constructions for mining or extraction	ha	0.0	5.5
	Power plant constructions	ha	0.0	6.1
	Sport and recreation constructions	ha	0.0	57.7
	Other civil engineering works not elsewhere classified	ha	0.0	6.8
Land use	Heterogeneous agricultural areas	ha	11,457.8	173,365.5
	Forests	ha	36,348.4	283,520.3
	Shrub and/or herbaceous vegetation association	ha	5,914.0	33,556.6
	Open spaces with little or no vegetation	ha	0.0	1.0
	Inland wetlands	ha	89.0	1,225.3
	Other	ha	7.8	1,564.5



In the last weeks (January- February 2023), Chile was heavily affected by serious forest fires/wild fires. On 5 January Chile requested support from UCPM Member States/ Participating States to limit the consequences of the destructive fires. The EMS Copernicus service for satellite maps was triggered in support to operations in the affected areas.

The present map shows the fire delineation in the area of Galvarino (Chile). The thematic layer has been derived from post-event satellite image by means of visual interpretation. The scale of analysis is 1:150000. The estimated geometric accuracy (RMSE) is 12.5 m or better, from native positional accuracy of the background satellite image. The minimum mapping unit (MMU) is 2500 sq m.

Pre-event image: Sentinel-2A/B (2023) (acquired on 29/12/2023 at 14:37 UTC, GSD 10.0 m, approx. 0% cloud coverage in AOI) provided under COPERNICUS by the European Union and ESA.  
Post-event image: SPOT6/7 © Airbus DS (2023), (acquired on 09/02/2023 at 14:15 UTC, GSD 1.5 m, approx. 0% cloud coverage in AOI, 22.4° off-nadir angle), provided under COPERNICUS by the European Union and ESA, all rights reserved.

Base vector layers: OpenStreetMap © OpenStreetMap contributors (2022), Wikimapia.org, GeoNames 2015, Global Administrative Areas (2012), refined by the producer.  
Inset maps: JRC 2013, Natural Earth 2012, GeoNames 2015.

Products elaborated in this Copernicus EMS Rapid Mapping activity are realized to the best of our ability, within a very short time frame, optimising the available data and information. All geographic information has limitations due to scale, resolution, date and interpretation of the original sources. No liability concerning the contents or the use thereof is assumed by the producer and by the European Union.

Delivery formats are Layered Geospatial PDF, GeoJPEG and vector (ESRI shapefiles, Google Earth KML, GeoJSON).

Map produced by e-GEOS released by e-GEOS (ODO).

For the latest version of this map and related products visit <https://emergency.copernicus.eu/EMSR647>

Jrc-ems-rapidmapping@ec.europa.eu  
© European Union  
For full Copyright notice visit <https://emergency.copernicus.eu/mapping/ems/cite-copernicus-ems-mapping-portal>

Relevant date records (UTC)	
Event	05/01/2023 00:00
Activation	05/02/2023 20:28
Situation as of	09/02/2023 14:15
Map production	10/02/2023



PROGRAMME OF THE  
EUROPEAN UNION

