

Galvarino - CHILE

Wildfire - Situation as of 17/02/2023

Delineation MONIT03 - Overview map 01

Cartographic Information

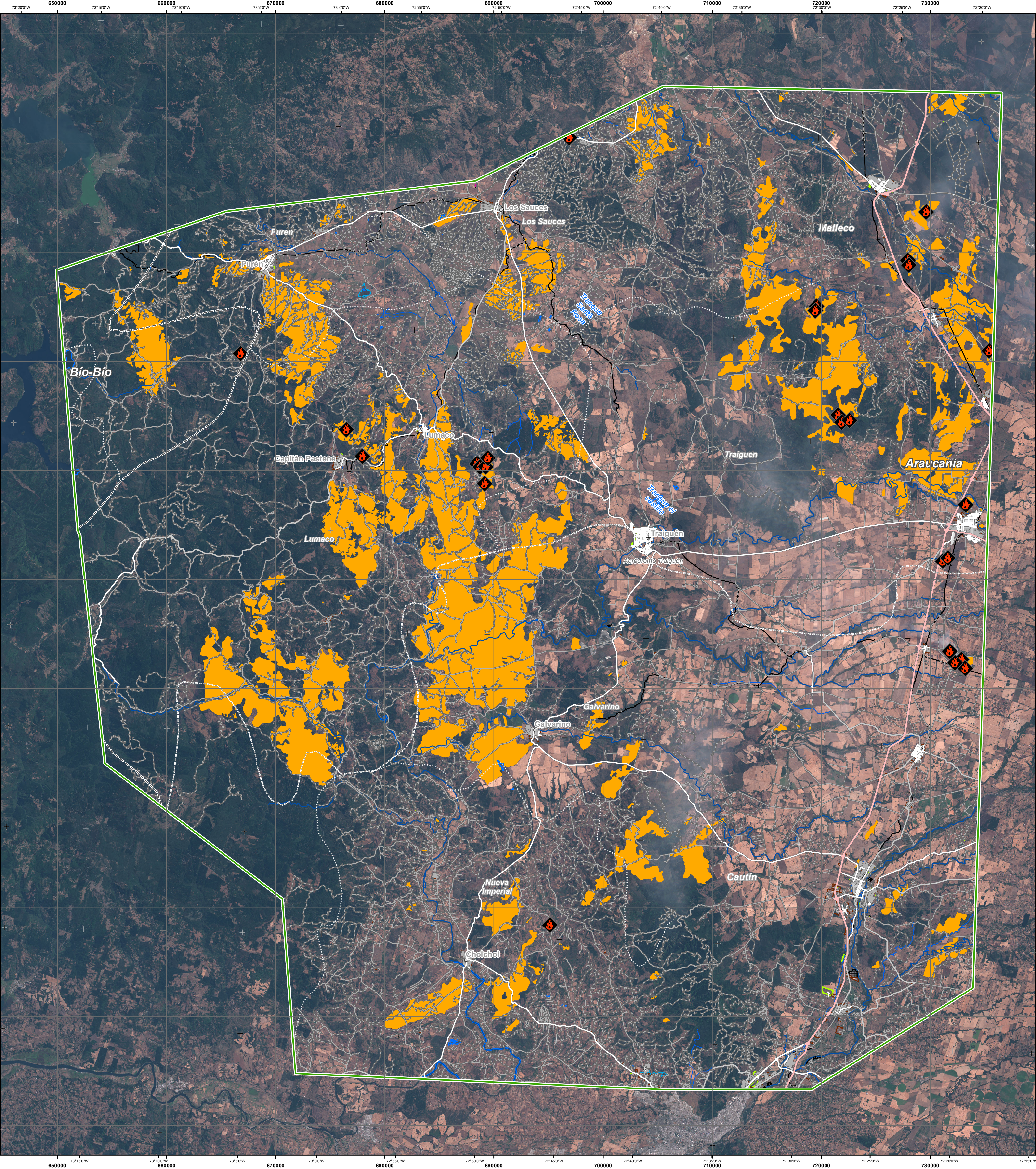
1:170000 Full color A1, 200 dpi resolution

0 3.5 7 14 km

Grid: WGS 1984 UTM Zone 18S map coordinate system
Tick marks: WGS 84 geographical coordinate system

Crisis Information	Built-Up Area	Transportation
Active Flames	Built-Up Area	Highway
General Information	Hydrography	Primary Road
Burnt Area	River	Secondary Road
Area of Interest	Stream	Local Road
Administrative boundaries	Lake	Cart Track
Region	Land Subject to Inundation	Long-distance railway
Province	Construction for mining or extraction	Airfield runway
Municipality	Water Well	Airfield runway
Placenames	Power plant construction	Land Use - Land Cover
Placename	Sport and recreation constructions	Features available in the vector package
	Dump Site	
	Aquaculture	
	Settling Basin	

Consequences within the AOI	Unit of measurement	Affected	Total in AOI
Burnt area	ha	72 233.3	72 233.3
Active Flames	No.	26	26
Estimated population	No.	799	175 150
Built-up	Number of inhabitants		
Residential buildings	ha	5.3	3 000.4
Industrial buildings	ha	0.0	443.2
School, university and research buildings	ha	0.0	114.5
Hospital or institutional care buildings	ha	0.0	17.9
Military	ha	0.0	32.1
Cemetery	ha	0.0	50.6
Transportation	km	0.0	1.8
Airfield runways	km	0.0	2.5
Highways	km	0.0	228.6
Primary Road	km	23.9	544.3
Secondary Road	km	2.5	186.3
Local Road	km	211.1	3 265.6
Cart Track	km	850.6	6 401.4
Long-distance railways	km	20.5	283.3
Facilities	ha	0.0	6.3
Settling basin	ha	0.0	96.6
Constructions for mining or extraction	ha	0.0	6.1
Power plant constructions	ha	0.0	283.7
Sport and recreation constructions	ha	0.0	3.4
Other civil engineering works not elsewhere classified	ha	0.0	3.4
Land use	ha	18 622.6	265 423.9
Heterogeneous agricultural areas	ha	49 888.6	343 351.1
Forest	ha	7 590.7	43 271.0
Shrub and/or herbaceous vegetation association	ha	0.2	2.9
Open spaces with little or no vegetation	ha	93.6	2 333.5
Wetlands	ha	7.8	3 636.5



Map Information

In the last weeks (January- February 2023), Chile was heavily affected by serious forest fires/wild fires. On 5 January Chile requested support from UCPM Member States/ Participating States to limit the consequences of the destructive fires. The EMS Copernicus service for satellite maps was triggered in support to operations in the affected areas.

The present map shows the fire delineation in the area of Galvarino (Chile). The thematic layer has been derived from post-event satellite image by means of visual interpretation. The scale of analysis is 1:50000. The estimated geometric accuracy (RMSE) is 12.5 m or better, from native positional accuracy of the background satellite image. The minimum mapping unit (MMU) is 2500 sq m.

Data sources

Pre-event image: Sentinel-2A/B (2023) (acquired on 29/12/2023 at 14:37 UTC, GSD 10.0 m, approx. 0% cloud coverage in AOI) provided under COPERNICUS by the European Union and ESA.
Post-event image: Sentinel-2A/B (2023) (acquired on 17/02/2023 at 14:37 UTC, GSD 10.0 m, approx. 0% cloud coverage in AOI) provided under COPERNICUS by the European Union and ESA.

Base vector layers: OpenStreetMap © OpenStreetMap contributors (2023), Wikimapia.org, GeoNames 2015, Copernicus Global Land Service: Land Cover (2019), Global Administrative Areas (2012), refined by the producer.
Inset maps: JRC 2013, Natural Earth 2012, GeoNames 2015.

Population data: GHS Population Grid © European Commission, 2019
https://ghsl.jrc.ec.europa.eu/ghs_pop2019.php

Disclaimer

Products elaborated in this Copernicus EMS Rapid Mapping activity are realized to the best of our ability, within a very short time frame, optimising the available data and information. All geographic information has limitations due to scale, resolution, date and interpretation of the original sources. No liability concerning the contents or the use thereof is assumed by the producer and by the European Union.

Delivery formats are Layered Geospatial PDF, GeoJPEG and vector (ESRI shapefiles, Google Earth KML, GeoJSON).

Map produced by e-GEOS released by e-GEOS (ODO).

For the latest version of this map and related products visit <https://emergency.copernicus.eu/EMSR647>

jrc-ems-rapidmapping@ec.europa.eu
© European Union
For full Copyright notice visit <https://emergency.copernicus.eu/mapping/ems/cite-copernicus-ems-mapping-portal>

Relevant date records (UTC)

Event	05/02/2023 00:00	Situation as of	17/02/2023 14:37
Activation	05/02/2023 20:28	Map production	18/02/2023



PROGRAMME OF THE
EUROPEAN UNION

