

Galvarino - CHILE
Wildfire - Situation as of 07/02/2023
Delineation - Overview map 01

Cartographic Information

1:150000 Full color A1, 200 dpi resolution

0 3 6 12 km

Grid: WGS 1984 UTM Zone 18S map coordinate system
Tick marks: WGS 84 geographical coordinate system

N

Crisis Information

Active Flames

Crisis Information

Burnt Area

General Information

Area of Interest

Administrative boundaries

Region

Province

Municipality

Placenames

Placename

Built-Up Area

Built-Up Area

Hydrography

River

Stream

Lake

Land Subject to Inundation

Facilities

Construction for mining or extraction

Water Well

Power plant construction

Sport and recreation constructions

Dump Site

Transportation

Primary Road

Secondary Road

Local Road

Cart Track

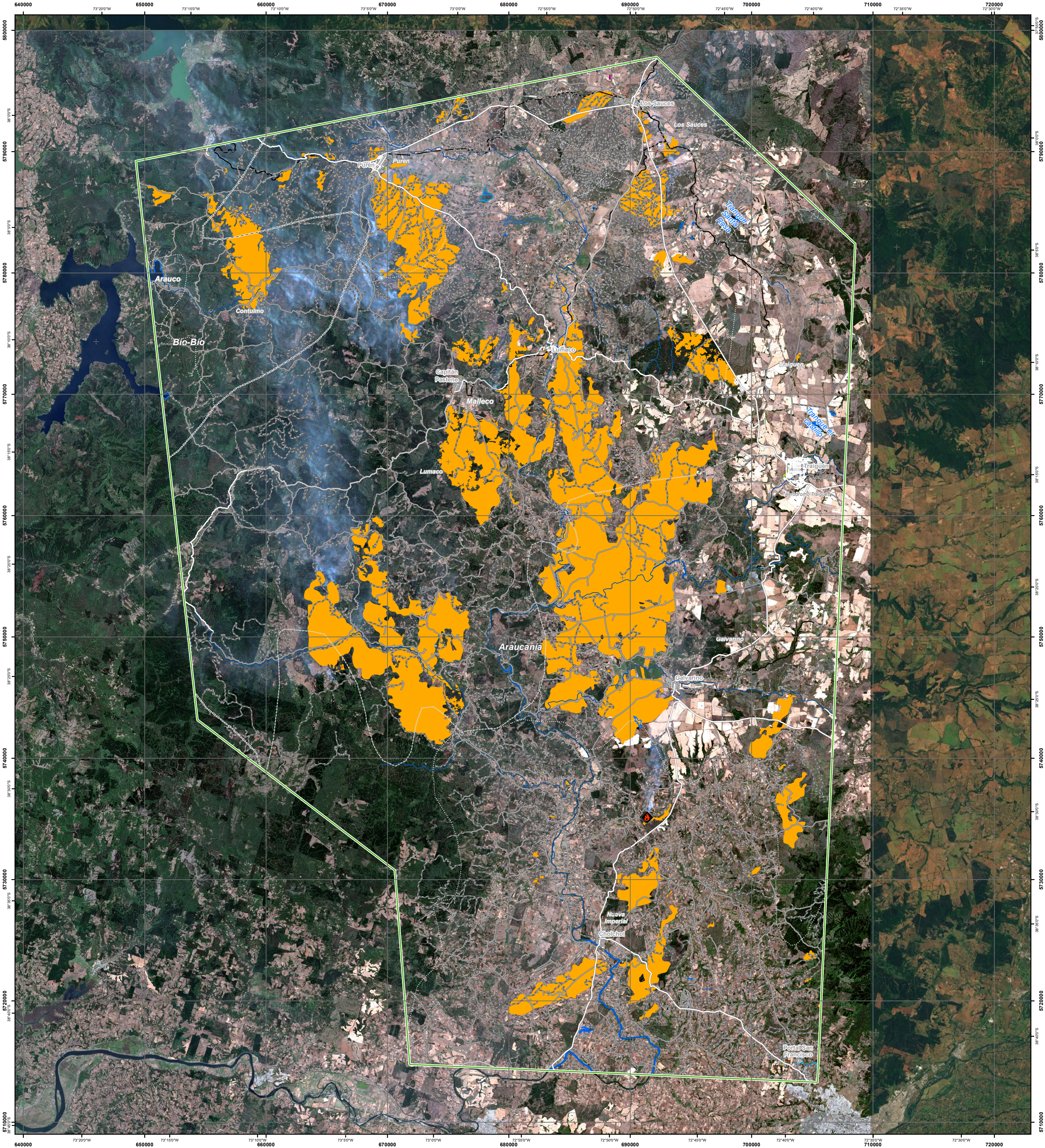
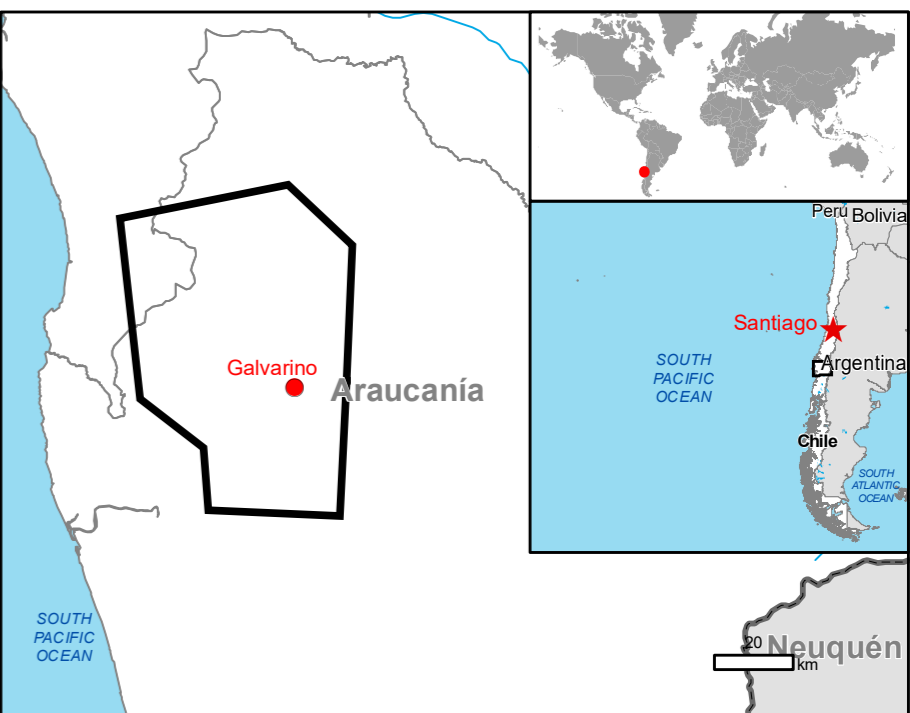
Long-distance railway

Airfield runway

Land Use - Land Cover

Features available in the vector package

Consequences within the AOI			
	Unit of measurement	Affected	Total in AOI
Burnt area	ha	601	67 042
Active flames	ha	1.4	1 369.8
Estimated population	Number of inhabitants	0.0	26.7
Built-up	Residential Buildings	ha	0.0
	School, university and research buildings	ha	0.0
	Hospital or institutional care buildings	ha	0.0
	Military	ha	0.0
	Cemetery	ha	0.0
Transportation	Airfield runways	km	0.0
	Primary Road	km	21.4
	Secondary Road	km	1.4
	Local Road	km	244.0
	Cart Track	km	419.9
Facilities	Long-distance railways	km	8.3
	Contributions for mining or extraction	ha	0.0
	Power plant constructions	ha	0.0
	Sport and recreation constructions	ha	0.0
	Other civil engineering works not elsewhere classified	ha	0.0
Land use	Heterogeneous agricultural areas	ha	10 873.6
	Forests	ha	35 469.0
	Orchids and/or herbaceous vegetation association	ha	5 612.4
	Open spaces with little or no vegetation	ha	0.0
	Wetland wetlands	ha	99.1
Other	ha	7.8	1 320.3



In the last weeks (January- February 2023), Chile was heavily affected by serious forest fires/wild fires. On 5 January Chile requested support from UCPM Member States/ Participating States to limit the consequences of the destructive fires. The EMS Copernicus service for satellite maps was triggered in support to operations in the affected areas.

The present map shows the fire delineation in the area of Galvarino (Chile). The thematic layer has been derived from post-event satellite image by means of visual interpretation. The scale of analysis is 1:150000. The estimated geometric accuracy (RMSE) is 20.0 m or better, from native positional accuracy of the background satellite image. The minimum mapping unit (MMU) is 2500 sq m.

Pre-event image: Sentinel-2A/B (2023) (acquired on 29/12/2023 at 14:37 UTC, GSD 10.0 m, approx. 0% cloud coverage in AOI) provided under COPERNICUS by the European Union and ESA.
Post-event image: Sentinel-2A/B (2023) (acquired on 07/02/2023 at 14:37 UTC, GSD 10.0 m, approx. 0% cloud coverage in AOI) provided under COPERNICUS by the European Union and ESA.

Base vector layers: OpenStreetMap © OpenStreetMap contributors (2022), Wikimapia.org, GeoNames 2015, Global Administrative Areas (2012), refined by the producer.
Inset maps: JRC 2013, Natural Earth 2012, GeoNames 2015.

Products elaborated in this Copernicus EMS Rapid Mapping activity are realized to the best of our ability, within a very short time frame, optimising the available data and information. All geographic information has limitations due to scale, resolution, date and interpretation of the original sources. No liability concerning the contents or the use thereof is assumed by the producer and by the European Union.

Delivery formats are Layered Geospatial PDF, GeoJPEG and vector (ESRI shapefiles, Google Earth KML, GeoJSON).

Map produced by e-GEOS released by e-GEOS (ODO).

For the latest version of this map and related products visit <https://emergency.copernicus.eu/EMSR647>

jrc-ems-rapidmapping@ec.europa.eu
© European Union
For full Copyright notice visit <https://emergency.copernicus.eu/mapping/ems/cite-copernicus-ems-mapping-portal>

Relevant date records (UTC)			
Event	05/01/2023 00:00	Situation as of	07/02/2023 14:37
Activation	05/02/2023 20:28	Map production	09/02/2023



PROGRAMME OF THE
EUROPEAN UNION

