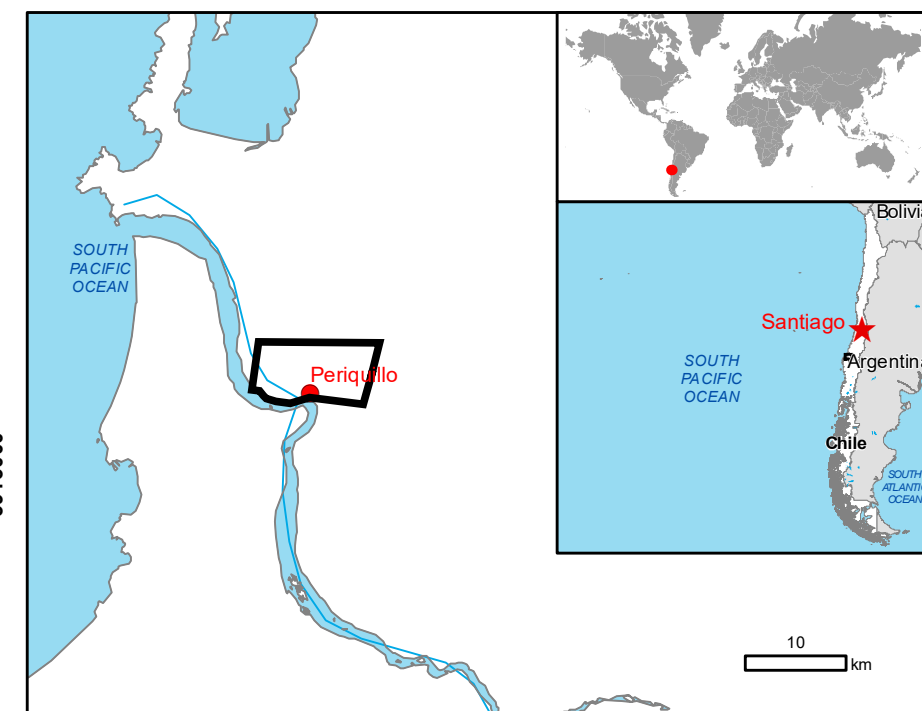


GLIDE number: N/A Activation ID: EMSR647
Int. Charter Act. ID: N/A Product N.: 06PENQUILLO, v1

Peniquillo - CHILE

Wildfire - Situation as of 09/02/2023

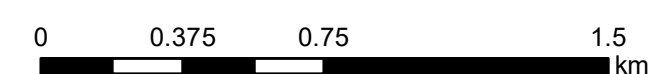
Delineation MONIT01 - Overview map 01



Cartographic Information

1:20000

Full color A1, 200 dpi resolution



Grid: WGS 1984 UTM Zone 18S map coordinate system

Tick marks: WGS 84 geographical coordinate system



Legend

Crisis Information	Hydrography	Transportation
Active Flames	River	Primary Road
Burnt Area	Stream	Secondary Road
Area of Interest	Lake	Local Road
General Information	Facilities	Cart Track
Administrative boundaries	Power and communication line	Long-distance railway
Municipality	Construction for mining or extraction	Land Use - Land Cover
Placename	Sport and recreation constructions	Features available in the vector package
Built-Up Area		
Residential		

Consequences within the AOI			
	Unit of measurement	Affected	Total in AOI
Burnt area	ha	11	1,495.7
Active Flames	No.	11	
Estimated population	Number of inhabitants	606	63,263
Built-up	Residential Buildings	ha	0.1 124.0
Transportation	Primary Road	km	0.0 12.3
	Secondary Road	km	0.0 11.1
	Local Road	km	3.0 86.9
	Cart Track	km	35.7 129.8
	Long-distance railways	km	2.5 12.8
Facilities	Constructions for mining or extraction	ha	0.0 5.8
	Sport and recreation constructions	ha	1.5 13.3
	Long-distance pipelines, communication and electricity lines	km	3.0 8.2
Land use	Heterogeneous agricultural areas	ha	1.6 69.3
	Forests	ha	1,462.8 6,107.7
	Shrub and/or herbaceous vegetation association	ha	5.1 80.0
	Inland wetlands	ha	3.9 10.6
	Other	ha	2.3 340.5

Map Information

In the last weeks (January- February 2023), Chile was heavily affected by serious forest fires/wild fires. On 5 January Chile requested support from UCPM Member States/Participating States to limit the consequences of the destructive fires. The EMS Copernicus service for satellite maps was triggered in support to operations in the affected areas.

The present map shows the fire delineation in the area of Periquillo (Chile). The thematic layer has been derived from post-event satellite image by means of visual interpretation. The scale of analysis is 1:25.000. The estimated geometric accuracy (RMSE) is 6.25 m or better, from native positional accuracy of the background satellite image. The minimum mapping unit (MMU) is 625 sq.m.

Relevant date records (UTC)

Event	05/02/2023 00:00	Situation as of	09/02/2023 14:14
Activation	05/02/2023 20:28	Map production	10/02/2023

Data sources

Pre-event image: Sentinel-2B (2023) (acquired on 03/01/2023 at 14:37 UTC, GSD 10 m, approx. 0% cloud coverage in Aoi, 0° off-nadir angle) provided under COPERNICUS by the European Union and ESA.
Post-event images: Sentinel-2B (2023) (acquired on 07/02/2023 at 14:37 UTC, GSD 10 m, approx. 0% cloud coverage in Aoi, 0° off-nadir angle) provided under COPERNICUS by the European Union and ESA.
SPOT6/7 © Airbus DS (2023), (acquired on 09/02/2023 at 14:14 UTC, GSD 1.5 m, approx. 0% cloud coverage in Aoi, 24.4° off-nadir angle), provided under COPERNICUS by the European Union and ESA, all rights reserved.

Base vector layers: OpenStreetMap © OpenStreetMap contributors (2022), Wikimapia.org, GeoNames 2015, Copernicus Global Land Service: Land Cover (2019), Global Administrative Areas (2012), refined by the producer.
Inset maps: JRC 2013, Natural Earth 2012, GeoNames 2015.

Population data: GHS_Population_Grid © European Commission, 2019
https://ghsl.jrc.ec.europa.eu/ghs_pop2019.php

Disclaimer

Products elaborated in this Copernicus EMS Rapid Mapping activity are realized to the best of our ability, within a very short time frame, optimising the available data and information. All geographic information has limitations due to scale, resolution, date and interpretation of the original sources. No liability concerning the contents or the use thereof is assumed by the producer and by the European Union.

Delivery formats are Layered Geospatial PDF, GeoJPEG and vector (ESRI shapefiles, Google Earth KML, GeoJSON).

Map produced by GAF AG released by e-GEOS (ODO).

For the latest version of this map and related products visit
<https://emergency.copernicus.eu/EMSR647>

jrc-ems-rapidmapping@ec.europa.eu
© European Union
For full Copyright notice visit <https://emergency.copernicus.eu/mapping/ems/cite-copernicus-ems-mapping-portal>